

Outfall 001

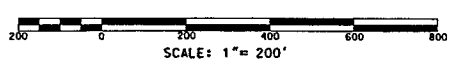
Transfer Station
Outfall 001

- LEGEND:**
- ◆ MW 7 EXISTING MONITORING WELL
 - ▲ SW 11 SURFACE WATER SAMPLING POINT
 - ◆ DOMESTIC SUPPLY WELL SAMPLING POINT
 - ⊕ GP-1 GAS PORT
 - - - 160 OVERBURDEN GROUNDWATER ELEVATION CONTOUR
 - ← OB APPROXIMATE OVERBURDEN GROUNDWATER FLOW DIRECTION

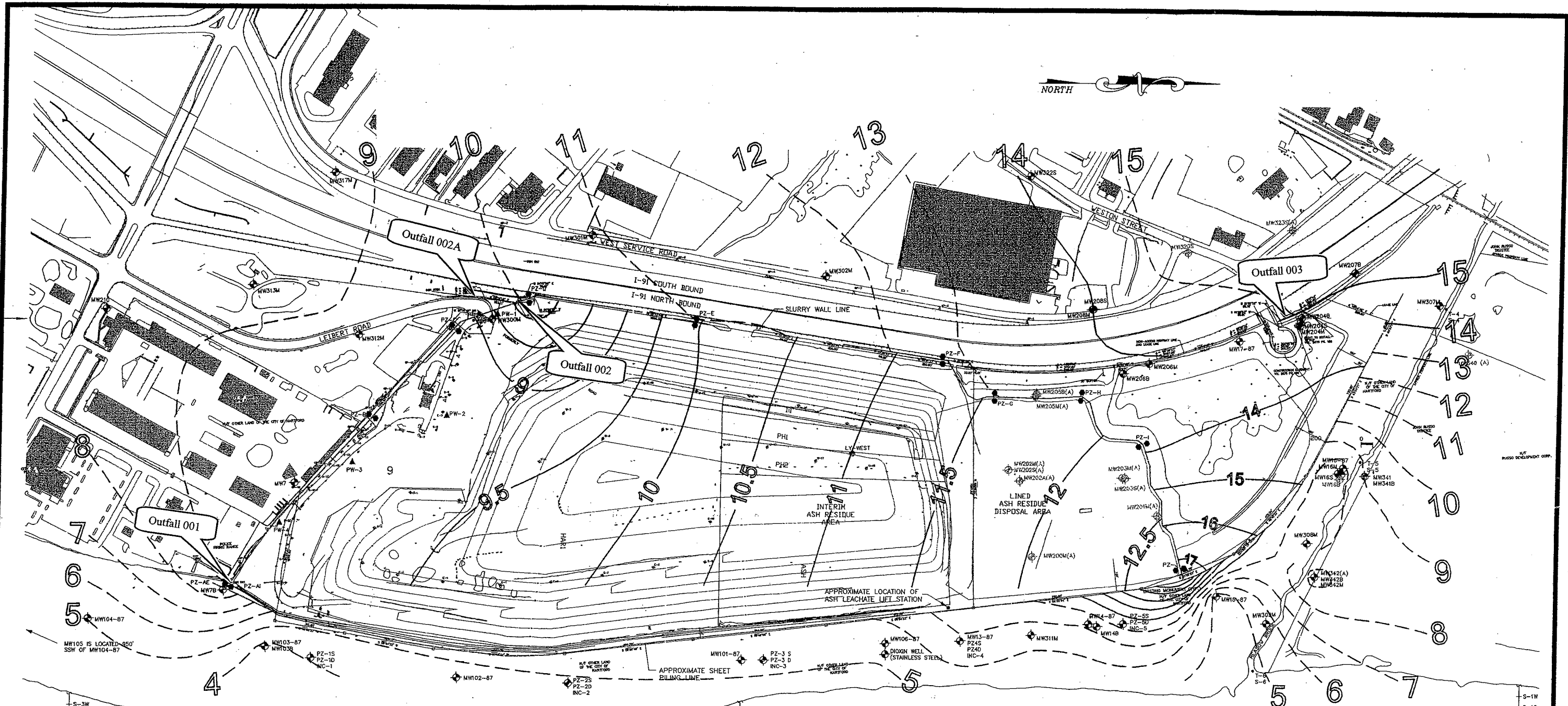
NOT RELEASED FOR CONSTRUCTION

Figure 2
Water Quality Monitoring Site Plan

Ellington Landfill
Sadd's Mill Road (Route 140)
Ellington, Connecticut



DATE: 01/22/98 BY: JLD/MLB



SITE PLAN PREPARED FROM INFORMATION OBTAINED AND MEASUREMENTS TAKEN BY TERRASYN GROUP, INC.

ALL LOCATIONS, DIMENSIONS, AND PROPERTY LINES DEPICTED ON THIS PLAN ARE APPROXIMATE. THIS PLAN SHOULD NOT BE USED FOR CONSTRUCTION OR LAND CONVEYANCE PURPOSES.

HORIZONTAL AND VERTICAL LOCATIONS OF WELLS, AND SELECTED SITE FEATURES DETERMINED THROUGH REPRESENTATIVES OF TERRASYN GROUP, INC.

WATER TABLE ELEVATIONS ARE BASED ON NGVD 1929.

PIEZOMETER WATER TABLE ELEVATIONS ARE BASED ON MEASUREMENTS MADE BY HRP ON 10/08/03.

WATER TABLE ELEVATIONS ARE BASED ON MEASUREMENTS MADE ON 10/01/03 - 10/08/03.

WATER TABLE CONTOURS, AND FLOW DIRECTIONS ASSUME HOMOGENOUS, ISOTROPIC AQUIFER CONDITIONS, AND HORIZONTAL FLOW.

FLUCTUATIONS IN THE LEVEL OF THE WATER TABLE MAY OCCUR DUE TO FACTORS NOT ACCOUNTED FOR AT THE TIME OF MEASUREMENT.

WATER TABLE CONTOURS ARE INTERPOLATED BETWEEN DATA POINTS, AND INFERRED IN OTHER AREAS.

- LEGEND**
- MW103-87 MONITORING WELL LOCATION
 - MW103-87(A) MONITORING WELL LOCATION ABANDONED/ DESTROYED
 - PZ-F APPROX. LOCATION OF SLURRY WALL INTERIOR AND EXTERIOR PIEZOMETER PAIRS ALONG SLURRY WALL
 - PW-4 PUMPING WELL
 - INFERRED OVERBURDEN GROUND WATER (ISOPLETH (OUTSIDE LANDFILL SLURRY WALL AND SHEET PILING)
 - INFERRED OVERBURDEN GROUND WATER ISOPLETH (INSIDE LANDFILL SLURRY WALL AND SHEET PILING)
 - S-3W SURFACE WATER SAMPLE WEST
 - S-3C SURFACE WATER SAMPLE CENTER
 - S-3E SURFACE WATER SAMPLE EAST
 - T-3 TRANSECT LINE

WELL NO.	MEASURING POINT ELEVATION	DEPTH TO WATER	GROUND WATER ELEVATION
PZ-A(0)	24.40	15.37	9.03
PZ-A(1)	21.60	12.44	9.16
PZ-B(0)	23.09	13.81	9.28
PZ-B(1)	22.26	12.76	9.50
PZ-C(0)	23.11	13.58	9.53
PZ-C(1)	21.70	12.09	9.65
PZ-D(0)	19.55	11.94	7.61
PZ-D(1)	19.38	9.14	10.25
PZ-E(0)	23.49	13.5	9.99
PZ-E(1)	21.30	10.27	11.03
PZ-F(0)	26.08	14.85	11.23
PZ-F(1)	24.50	11.62	12.88
PZ-G(0)	35.95	24.4	11.55
PZ-G(1)	32.79	19.75	13.04
PZ-H(0)	35.69	23.91	11.78
PZ-H(1)	32.18	18.62	13.56
PZ-I(0)	38.34	26.17	12.17
PZ-I(1)	24.49	10.71	13.78
PZ-J(0)	38.28	25.92	12.36
PZ-J(1)	33.95	16.69	17.26

MONITORING WELLS

WELL NO.	MEASURING POINT ELEVATION	DEPTH TO WATER	GROUND WATER ELEVATION	WELL NO.	MEASURING POINT ELEVATION	DEPTH TO WATER	GROUND WATER ELEVATION
7	22.30	12.77	9.53	205B	ABANDONED		
7B	20.87	13.56	7.31	205M	ABANDONED		
13	23.70	16.81	6.89	206B	21.63	9.99	11.74
14-87	23.61	16.55	7.06	206M	20.07	6.91	13.16
14B	21.93	10.03	11.90	207B	24.01	6.38	17.63
15-87	23.67	19.65	4.02	208M	21.90	8.88	13.22
16M	22.04	14.63	7.41	208S	21.62	6.86	14.76
18B	21.09	ABANDONED		210	24.65	15.89	8.76
18S	21.73	14.37	7.36	300M	23.13	13.94	9.19
17-87	19.61	6.31	13.30	301M	21.09	10.16	10.93
101-87	21.18	15.91	5.28	302M	21.01	9.60	11.41
102-87	23.03	16.32	6.71	307M	25.04	10.78	14.26
103-87	21.26	17.64	3.62	308M	22.22	15.10	7.12
103B	21.19	9.50	11.69	309M	24.13	DRY	
104	22.15	17.13	5.02	311M	23.17	16.80	6.37
105	18.48	13.72	4.76	312M	25.86	16.90	8.96
106	24.33	19.06	5.24	313M	22.64	13.74	8.80
200M	ABANDONED			315M	16.19	ABANDONED	
201M	ABANDONED			317M	22.71	14.11	8.60
202A	ABANDONED			319	23.51		
202M	ABANDONED			320S	22.75	ABANDONED	
202S	ABANDONED			322	19.56		
203M	ABANDONED			323S	23.43	DESTROYED	
203S	ABANDONED			340	16.64	DESTROYED	
204B	22.45	7.77	14.68	341M	19.23	9.91	9.32
204M	20.06	6.30	13.71	341B	19.47	6.86	12.59
204S	19.94	5.04	14.90	342M	20.68	11.09	9.59
				342B	20.46	7.87	12.61

INFERRED GROUNDWATER CONTOURS 10/01/03 - 10/08/03
SCALE: 1"=200'

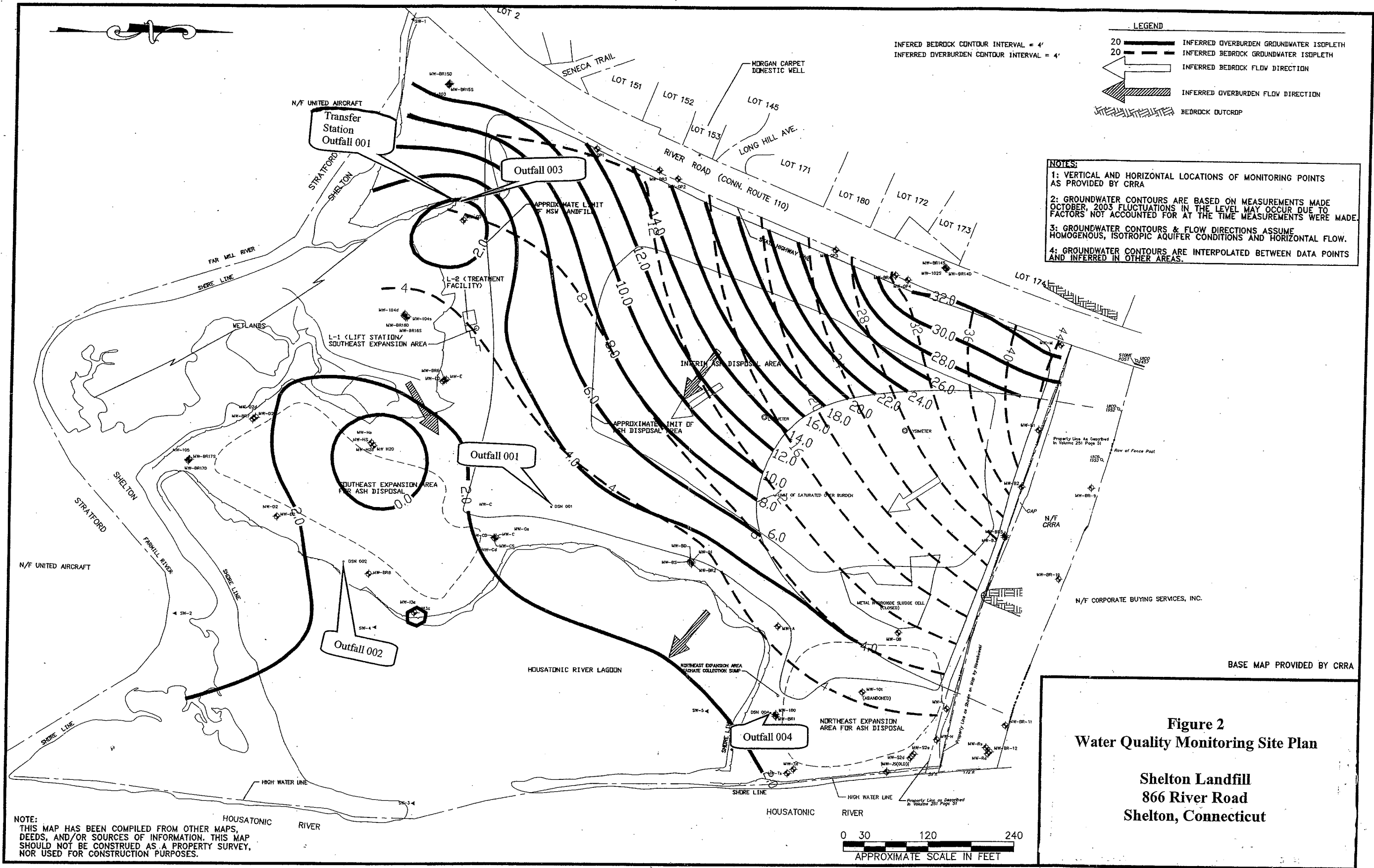
Figure 2
Water Quality Monitoring Site Plan

Hartford Landfill
180 Leibert Road
Hartford, Connecticut

SCALE: 1"=200'

0 INCHES 1

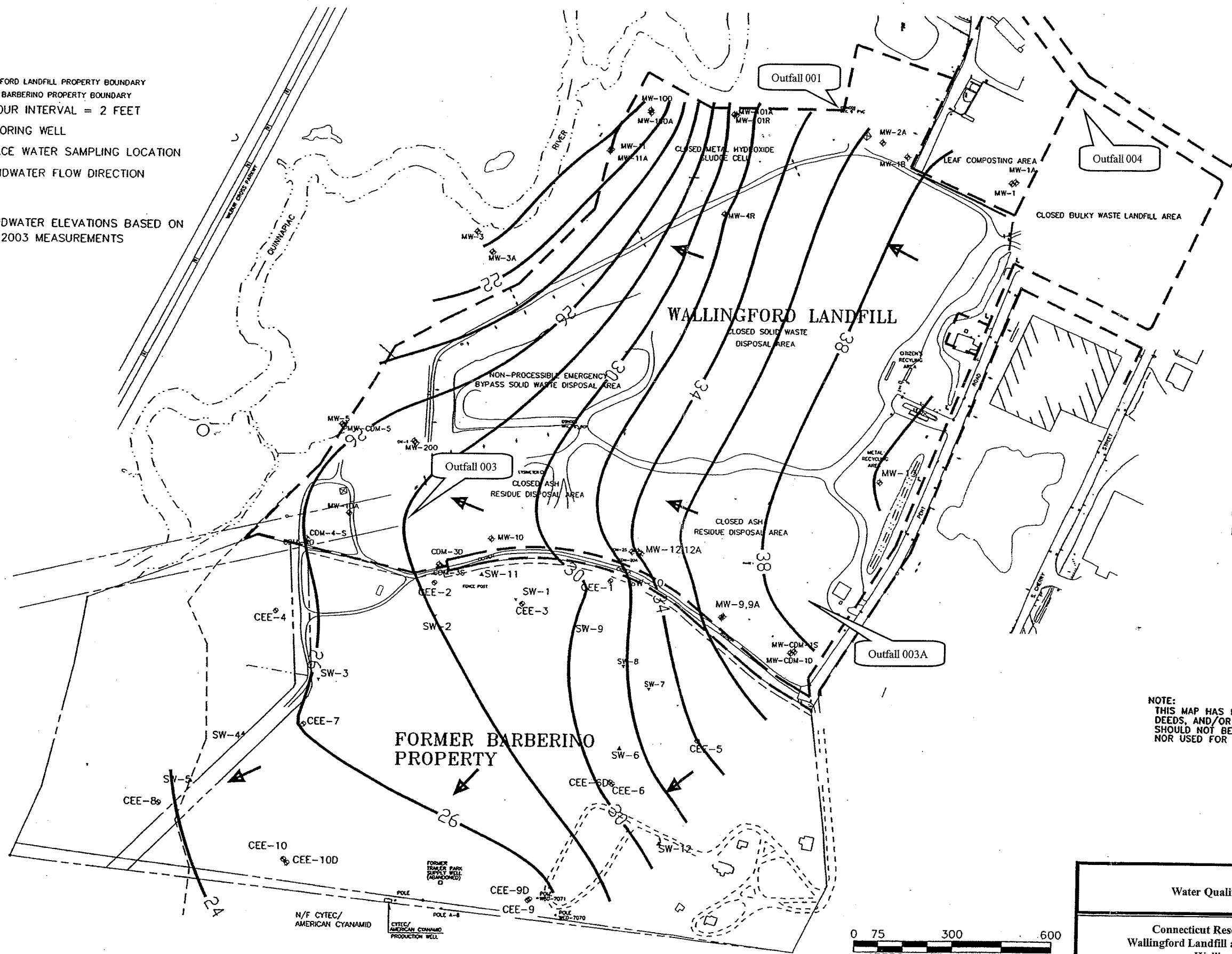
SHEET



LEGEND

- WALLINGFORD LANDFILL PROPERTY BOUNDARY
- - - FORMER BARBERINO PROPERTY BOUNDARY
- CONTOUR INTERVAL = 2 FEET
- ⊕ MONITORING WELL
- ▽ SURFACE WATER SAMPLING LOCATION
- ← GROUNDWATER FLOW DIRECTION

GROUNDWATER ELEVATIONS BASED ON APRIL 2003 MEASUREMENTS



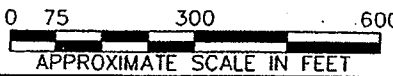
WELLS USED TO DEVELOP CONTOURS

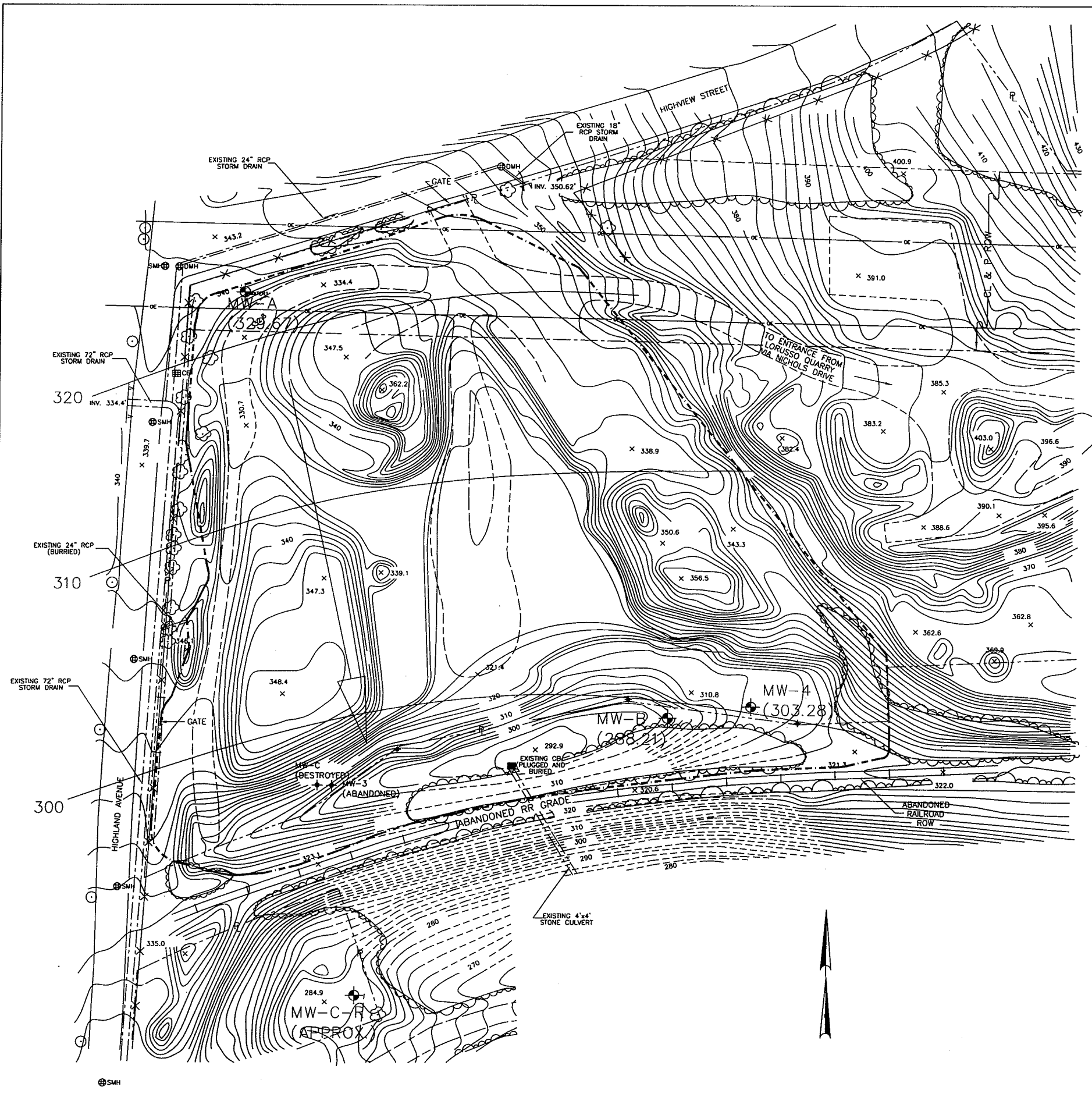
MW-1B	CEE-1
MW-2A	CEE-4
MW-3	CEE-5
MW-4R	CEE-6
MW-5	CEE-7
MW-9	CEE-8
MW-10	CEE-9
MW-10A	CEE-10
MW-11	
MW-12	
MW-13	
MW-100	
MW-101R	
MW-200	

NOTE:
THIS MAP HAS BEEN COMPILED FROM OTHER MAPS, DEEDS, AND/OR SOURCES OF INFORMATION. THIS MAP SHOULD NOT BE CONSTRUED AS A PROPERTY SURVEY, NOR USED FOR CONSTRUCTION PURPOSES.

Figure 2
Water Quality Monitoring Site Plan

Connecticut Resources Recovery Authority
Wallingford Landfill and Former Barberino Property
Wallingford, Connecticut





NOTES:

- 1) BASE MAP DEVELOPED FROM SEPTEMBER, 1990 AERIAL PHOTOGRAMMETRY PLANS RECEIVED IN DIGITIZED FORM FROM DECARLO & DOLL, INC. ENTITLED "TOPOGRAPHIC SURVEY, CRRA WATERBURY LANDFILL", AND "DXF FILE # CRRAT94 INDEX".
- 2) PROPERTY LINES PER "PLAN PREPARED FOR CRRA WATERBURY", SHEET No. 1 OF 1, DATED APRIL 5, 1990, BY FUSS & O'NEILL, INC. AND BEARING CLASS A2 ? CERTIFICATION AND STAMP OF LAWRENCE R. GEISSER, SR., LICENSED LAND SURVEYOR No. 12327. ?
- 3) MONITORING WELLS 3 AND 4 INSTALLED BY GENERAL BORINGS INC. ON JUNE 3, 1991 THROUGH 5, 1991. OBSERVED BY GZA PERSONNEL. MONITORING WELLS A AND B? INSTALLED PREVIOUSLY BY OTHERS. ?
- 4) THE LOCATION OF MONITORING WELLS A, B, 3, AND 4 WERE TAKEN FROM PLAN PROVIDED BY DECARLO & DOLL, INC. ENTITLED "MONITORING WELL LOCATION PLAN, CRRA LANDFILL" ? DATED JULY 11, 1991, ORIGINAL SCALE 1"=50', JOB No. 50794.04, FILE No. B-493. ?
- 5) MONITORING WELL MW-3 WAS ABANDONED ON JANUARY 14, 2002 AND REPLACED IN THE MONITORING NETWORK WITH MW-C, WHICH IS A WELL OF SIMILAR CONSTRUCTION. MW-C WAS? INSTALLED ON JANUARY 14, 2002 BY SOLTESTING, INC. INSTALLATION OF MW-C WAS OBSERVED BY ANALYTICAL CONSULTING TECHNOLOGY, INC. THE LOCATION OF MW-C IS BASED ON THE SITE PLAN PREPARED BY ANALYTICAL CONSULTING TECHNOLOGY FOR THE JANUARY 2002 GROUNDWATER MONITORING REPORT.

- LEGEND:**
- EXISTING PROPERTY LINE
 - - - - PERIMETER LIMITS OF EXISTING PERMITTED AREA FOR LANDFILL
 - - - - 310 EXISTING CONTOUR (DASHED WHEN OUTSIDE OF SURVEY LIMITS)
 - - - - EXISTING DIRT ROAD
 - - - - EXISTING OVERHEAD ELECTRIC LINE
 - - - - EXISTING EDGE OF WOODED/SHRUB AREA
 - - - - EXISTING DRAINAGE SWALE
 - - - - EXISTING HEADWALL/ENDWALL
 - EXISTING CONNECTICUT LIGHT AND POWER POLE
 - x 362.8 EXISTING SPOT ELEVATION
 - + EXISTING LIMITS OF WASTE MARKER
 - WELL A EXISTING MONITORING WELL LOCATION AND IDENTIFICATION (BY OTHERS)
 - WELL J EXISTING MONITORING WELL LOCATION AND IDENTIFICATION (BY GENERAL BORINGS, INC.)
 - ⊞ CB EXISTING CATCH BASIN
 - ⊕ DMH EXISTING DRAINAGE MANHOLE
 - ⊕ SMH EXISTING SEWER MANHOLE
 - + ABANDONED MONITORING WELL

2	CRRA UPDATE TO NOTES: MW-3, MW-C	CRS	7/15/04	DATE	SCALE IN FEET 1"=50' 0' 25' 50' 100' 150' 200'	CRRA WATERBURY BULKY WASTE LANDFILL WATERBURY, CONNECTICUT	SITE PLAN
	DESCRIPTION	BY	7/15/04	DATE			
1	REV. No.	PROJECT	BRIDGEPORT				
	SHEET No.	1 OF 1					

FIGURE 2: SITE PLAN
CRRA WATERBURY BULKY WASTE LANDFILL
CORNER OF HIGHLAND AVE AND HIGHVIEW ST
WATERBURY, CONNECTICUT

DRAWN BY: RAW (GZA)
 SCALE: 1"=50'
 DATE: AUGUST 1, 1991

CHECKED BY: JDG (DES)
 REVIEWED BY: BCM (DES)