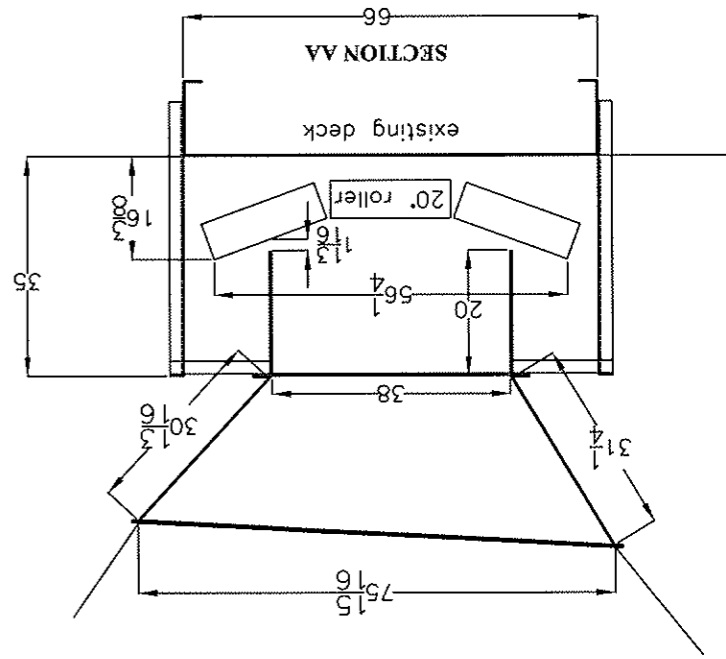
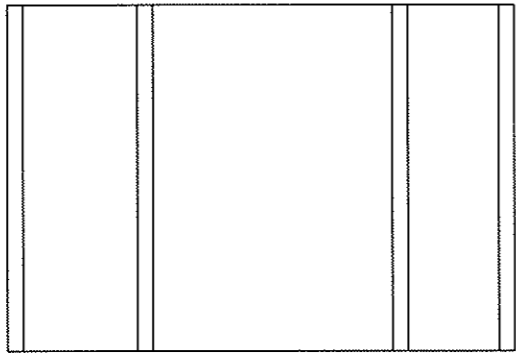
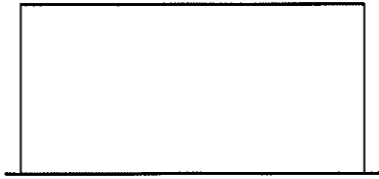
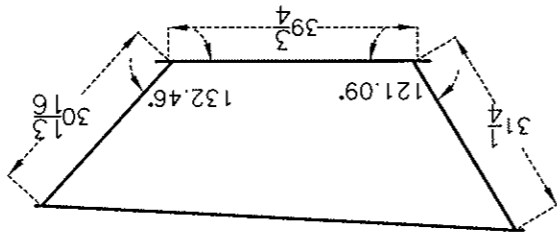
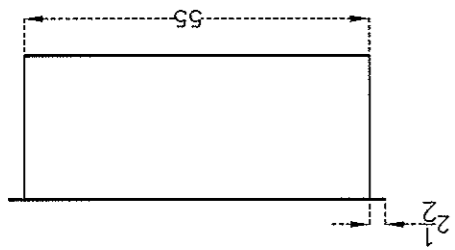
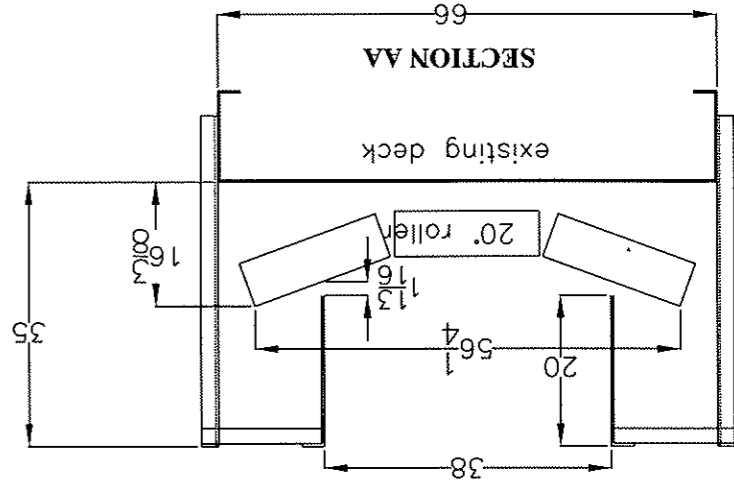
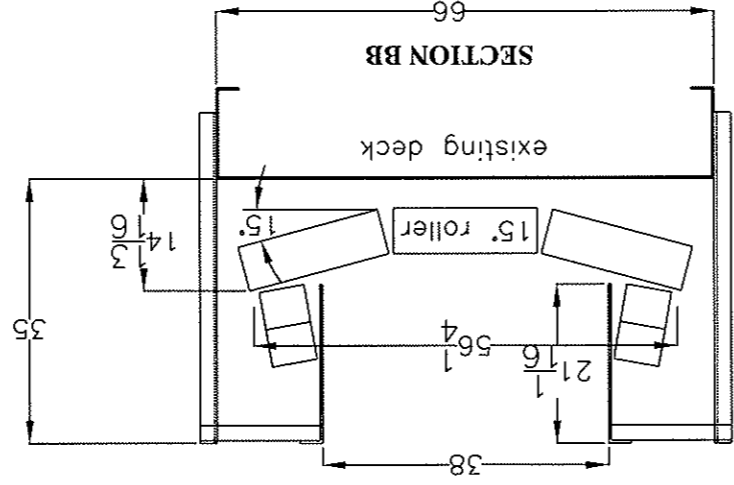
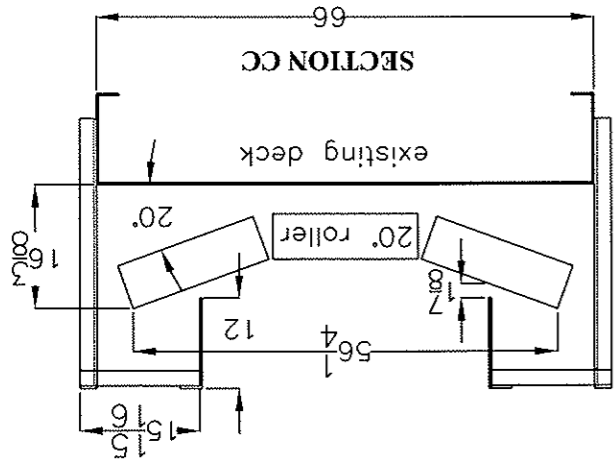


DRAWING # 1

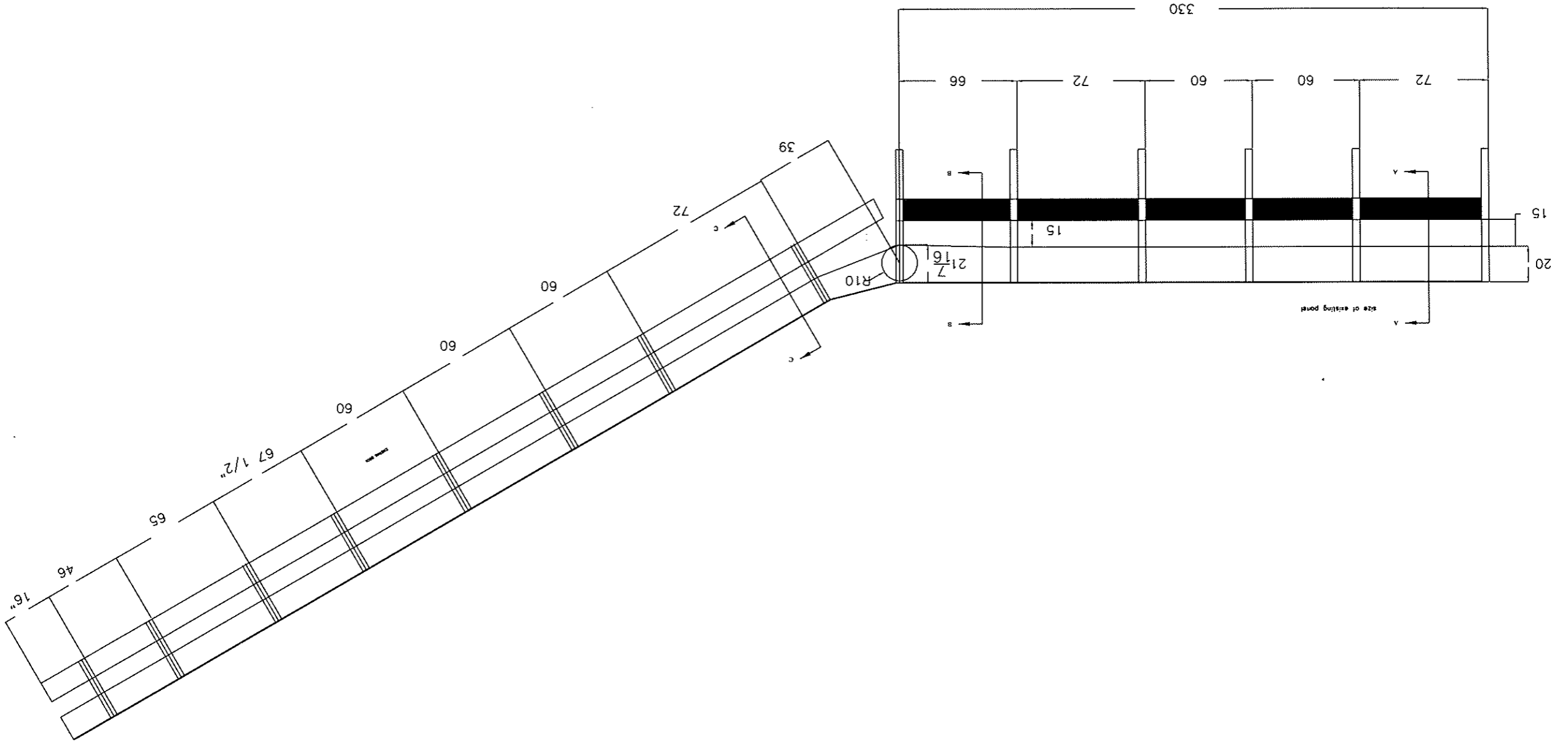
All material shall be A36 new steel
 $\frac{3}{8}$ " thick



DRAWING #2



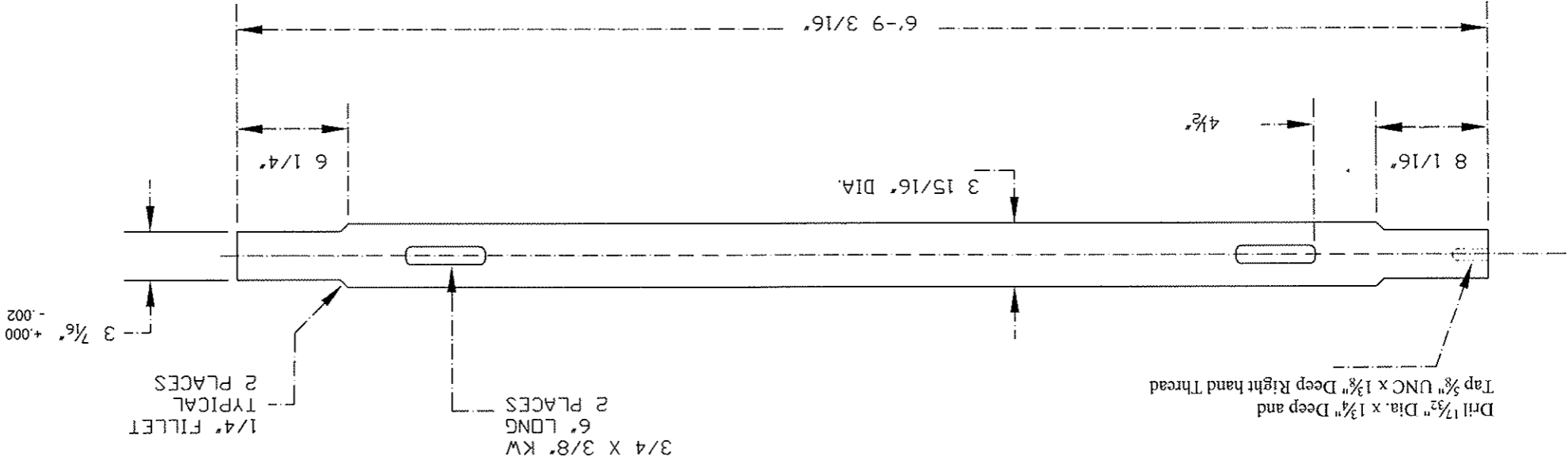
DRAWING # 3



| | | | | |
|--|------|-------------------------------|--------------------------|--|
| | | | | |
| | SIZE | REV. | TOLERANCE | |
| | | | SCALE | |
| | | DRAWING NO. #4 | DATE: 3/10/08 | |
| | | DRAWING TITLE: 126 TAIL SHAFT | APPROVED BY: ABDUL RABAH | |
| | | | | |

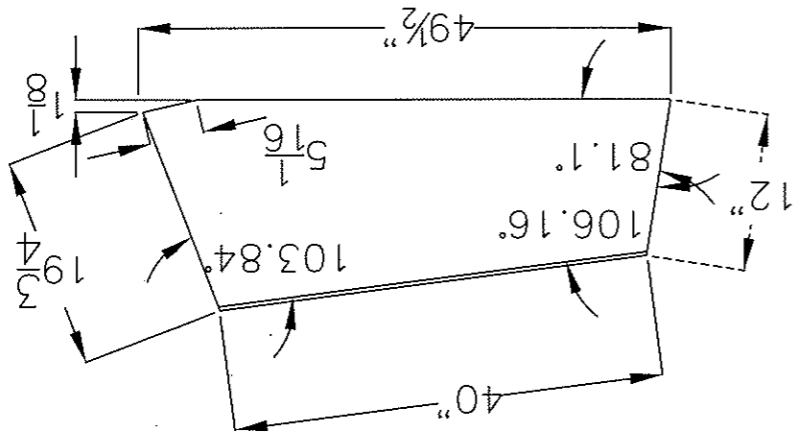
SHAFT MATERIAL C1045 TG&P
 K40 Hub, FSAF 22520 x 3 7/16" x 6 1/8" L.T.B
 BRG CENTER 75 1/2"

123 TAIL SHAFT

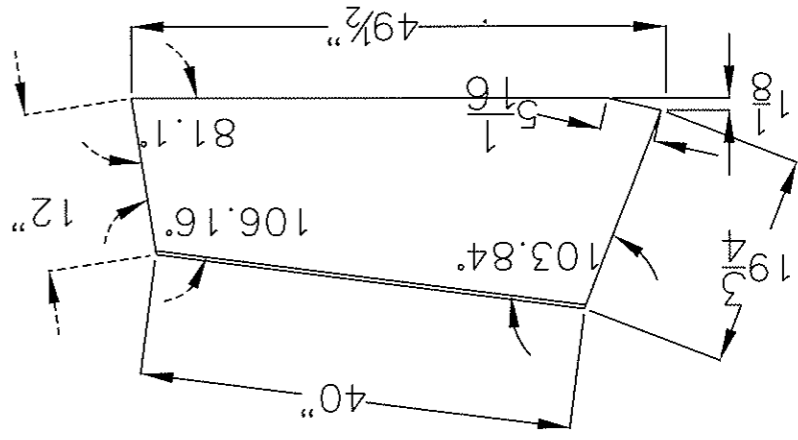


DRAWING # 5

S-5 required 1

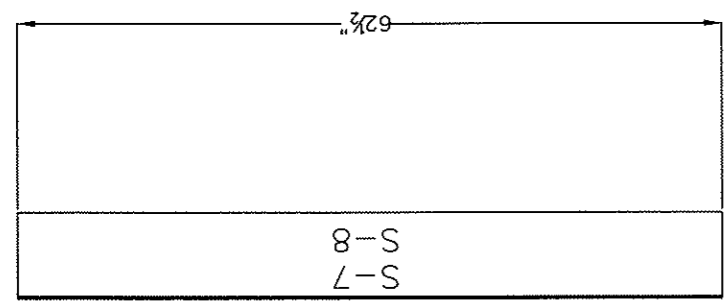


S-4 required 1

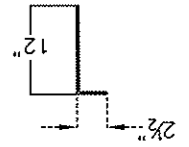
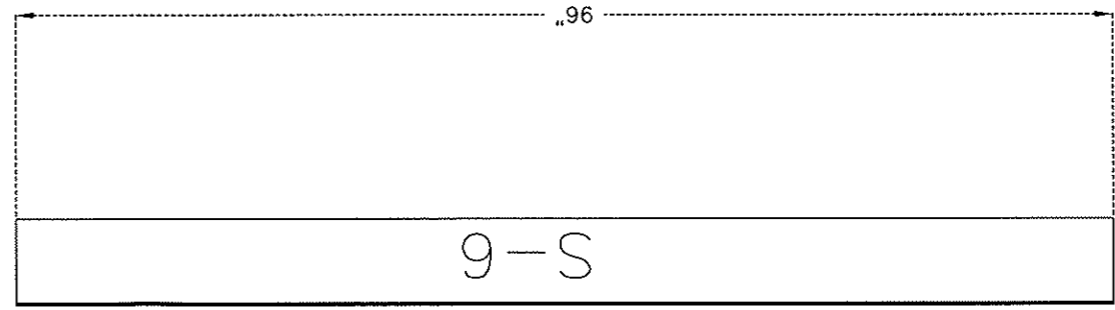


DRAWING # 6

S-7 required 1 shown
S-8 Required 1 Opposite



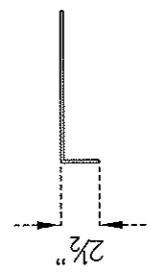
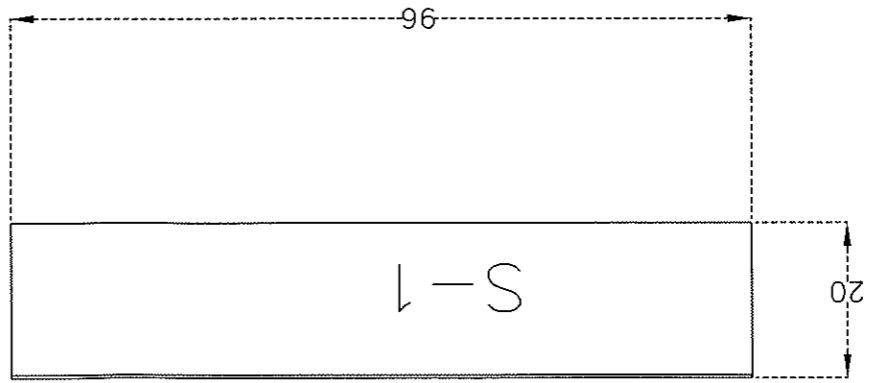
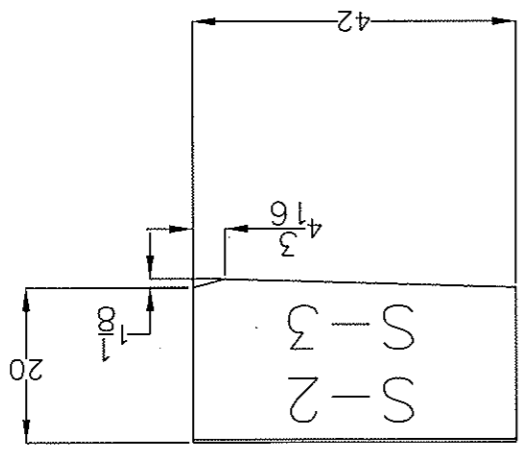
S-6 required 8



DRAWING # 7

All side wall material shall be A36 new steel $\frac{3}{8}$ " thick

- S-1 required 6
- S-2 required 1 Shown
- S-3 required 1 opposite



DRAWING # 8

Wheel thickness is $\frac{1}{2}$ "

