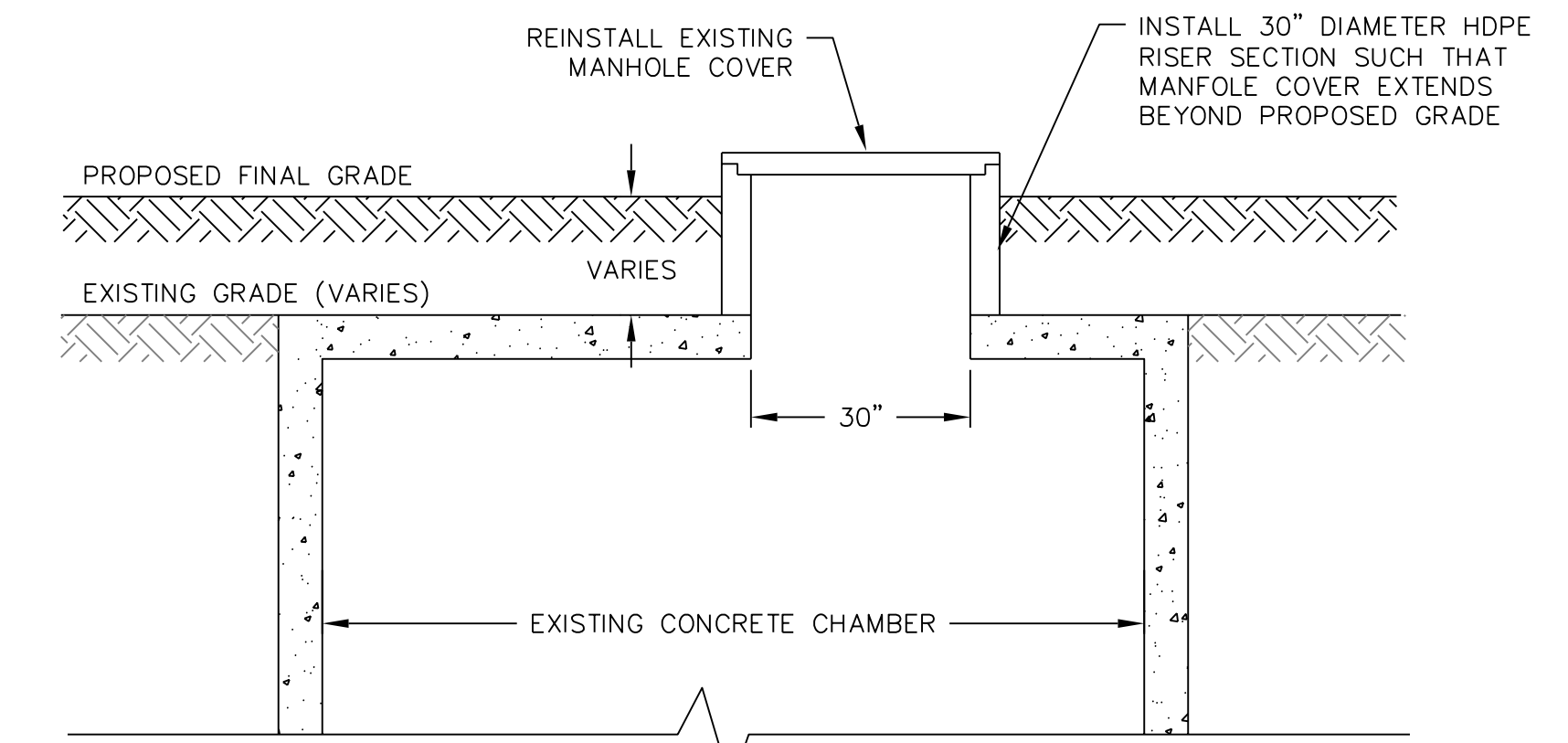
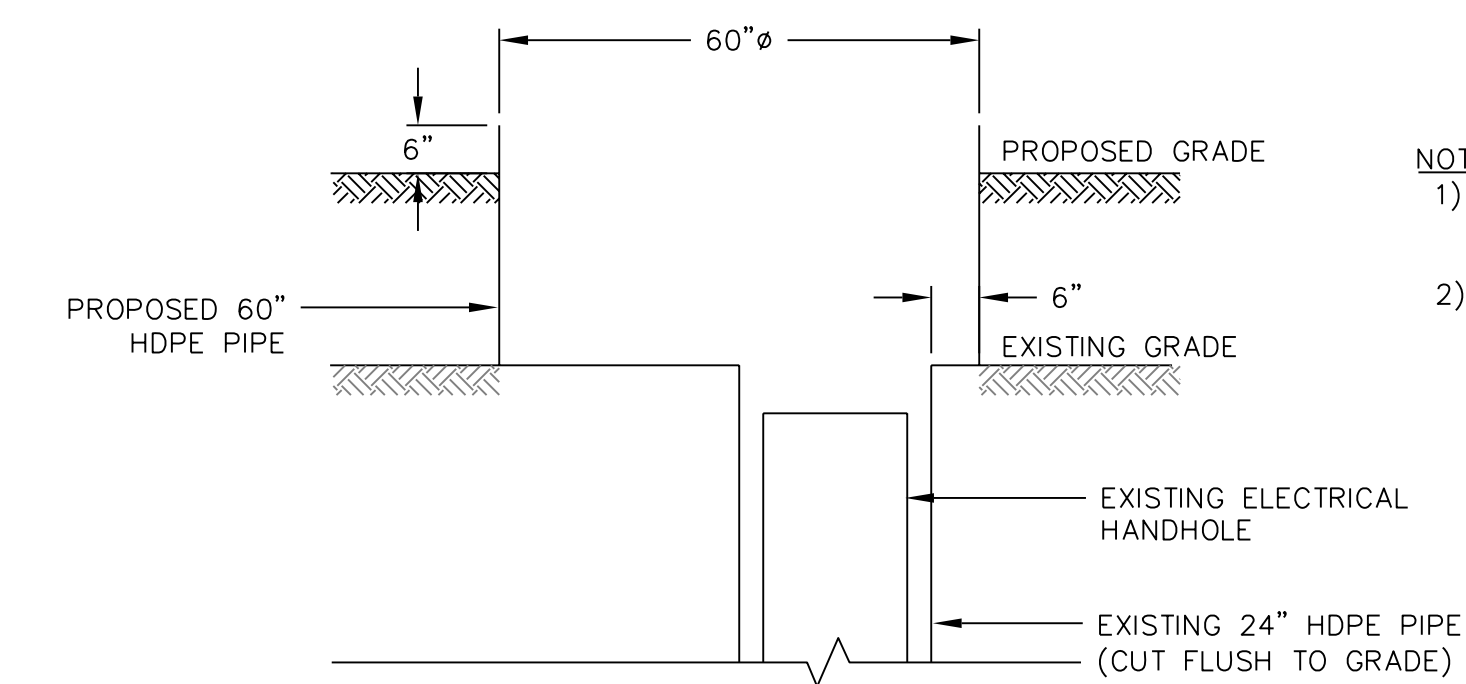


**PLAN VIEW**  
NOTES  
(1/2 SCALE OF SECTION VIEW)

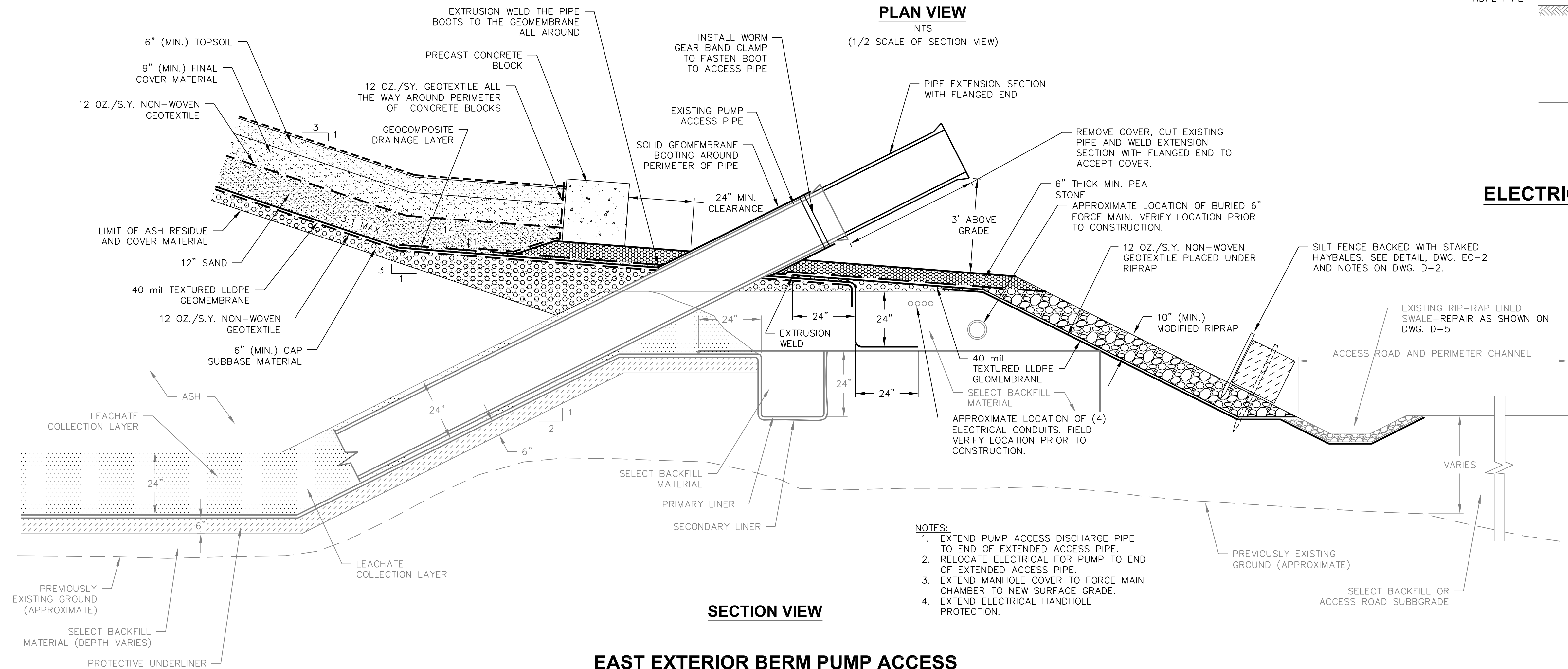


**SECTION VIEW**  
**FORCE MAIN CHAMBER MANHOLE**  
**EXTENSION DETAIL**  
NOT TO SCALE



- NOTES:**
- 1) CUT EXISTING 24" HDPE SMOOTH BORE PIPE FLUSH TO EXISTING GRADE.
  - 2) PLACE 60" HDPE SMOOTH BORE PIPE OVER OPENING AS SHOWN. 60" HDPE PIPE TO EXTEND 6" OVER PROPOSED FINAL GRADE.

**SECTION VIEW**  
**ELECTRICAL HANDHOLE PROTECTION DETAIL**  
NOT TO SCALE



- NOTES:**
1. EXTEND PUMP ACCESS DISCHARGE PIPE TO END OF EXTENDED ACCESS PIPE.
  2. RELOCATE ELECTRICAL FOR PUMP TO END OF EXTENDED ACCESS PIPE.
  3. EXTEND MANHOLE COVER TO FORCE MAIN CHAMBER TO NEW SURFACE GRADE.
  4. EXTEND ELECTRICAL HANDHOLE PROTECTION.

**SECTION VIEW**  
**EAST EXTERIOR BERM PUMP ACCESS**  
**PIPE DETAIL**  
NOT TO SCALE

REVISED EAST EXTERIOR BERM PUMP ACCESS PIPE DETAIL		4/14/09	CNS
NO.	REVISIONS	DATE	APPROVAL
CONNECTICUT RESOURCES RECOVERY AUTHORITY HARTFORD LANDFILL HARTFORD, CONNECTICUT			
HARTFORD LANDFILL PHASE I ASH AREA FINAL CLOSURE		DESIGN: MAB 03/02/09	DRAWN: KDH 03/02/09
EAST EXTERIOR BERM PUMP ACCESS PIPE DETAILS		CHECKED: CNS 03/02/09	SCALE: NTS
DATE: _____		PROJECT: 153306-000260-000006	DRAWING
CARL N. STOPPER PROFESSIONAL ENGINEER CT PE # 13255		D-4	