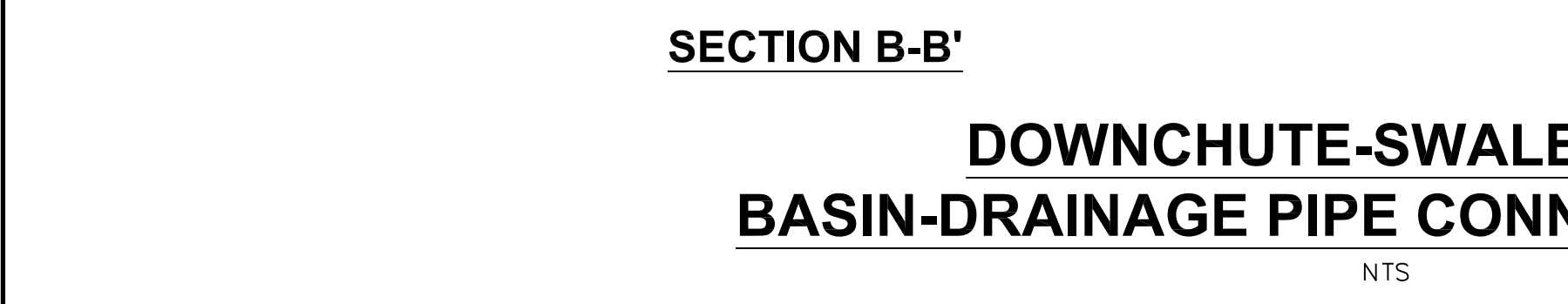
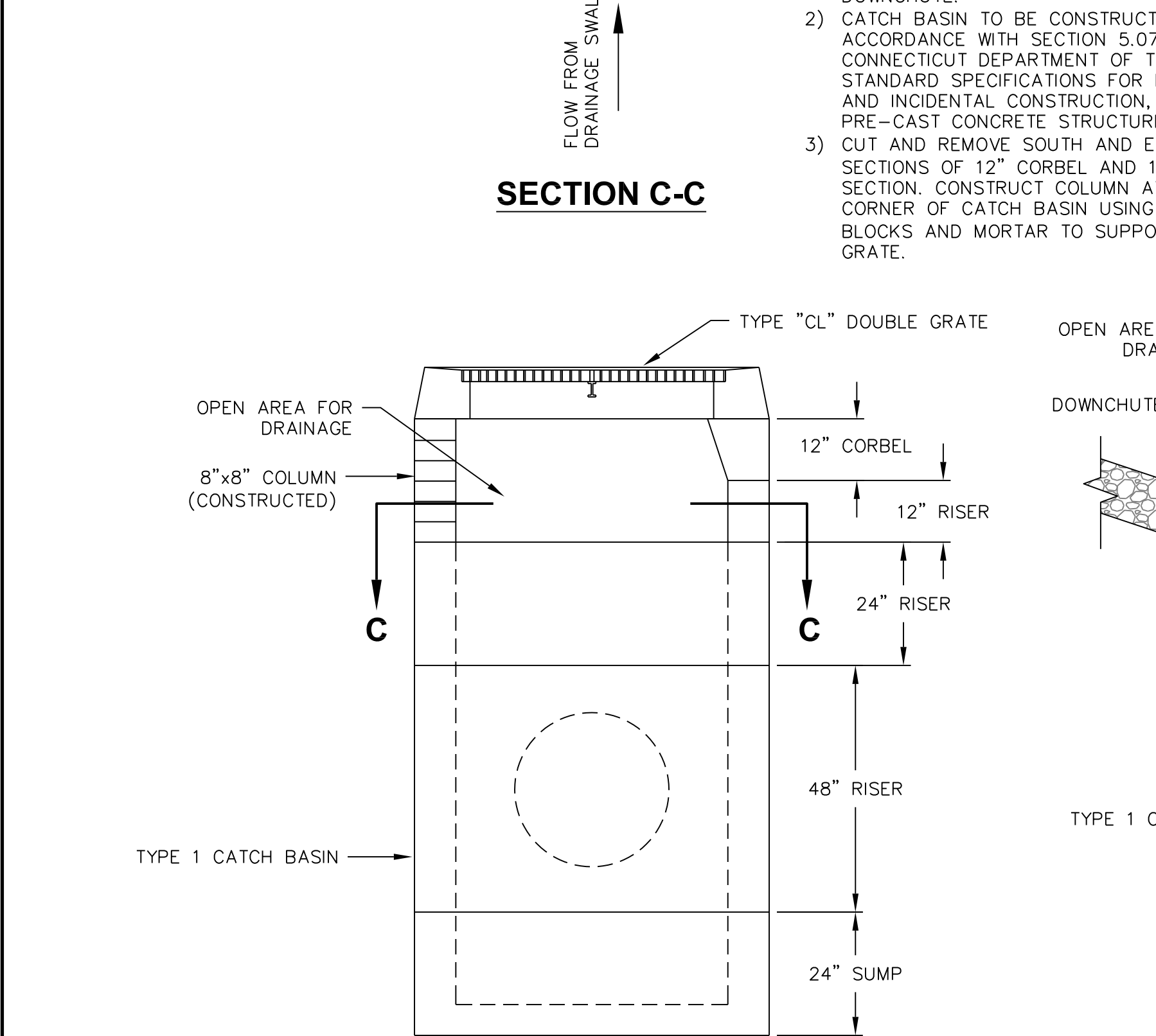
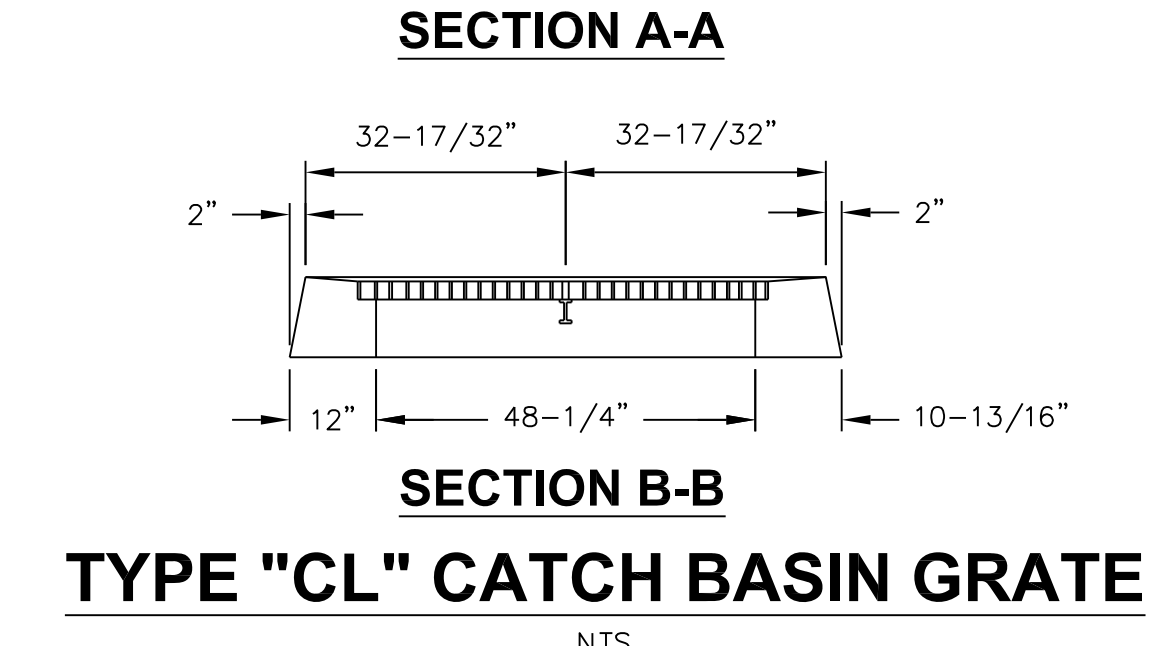
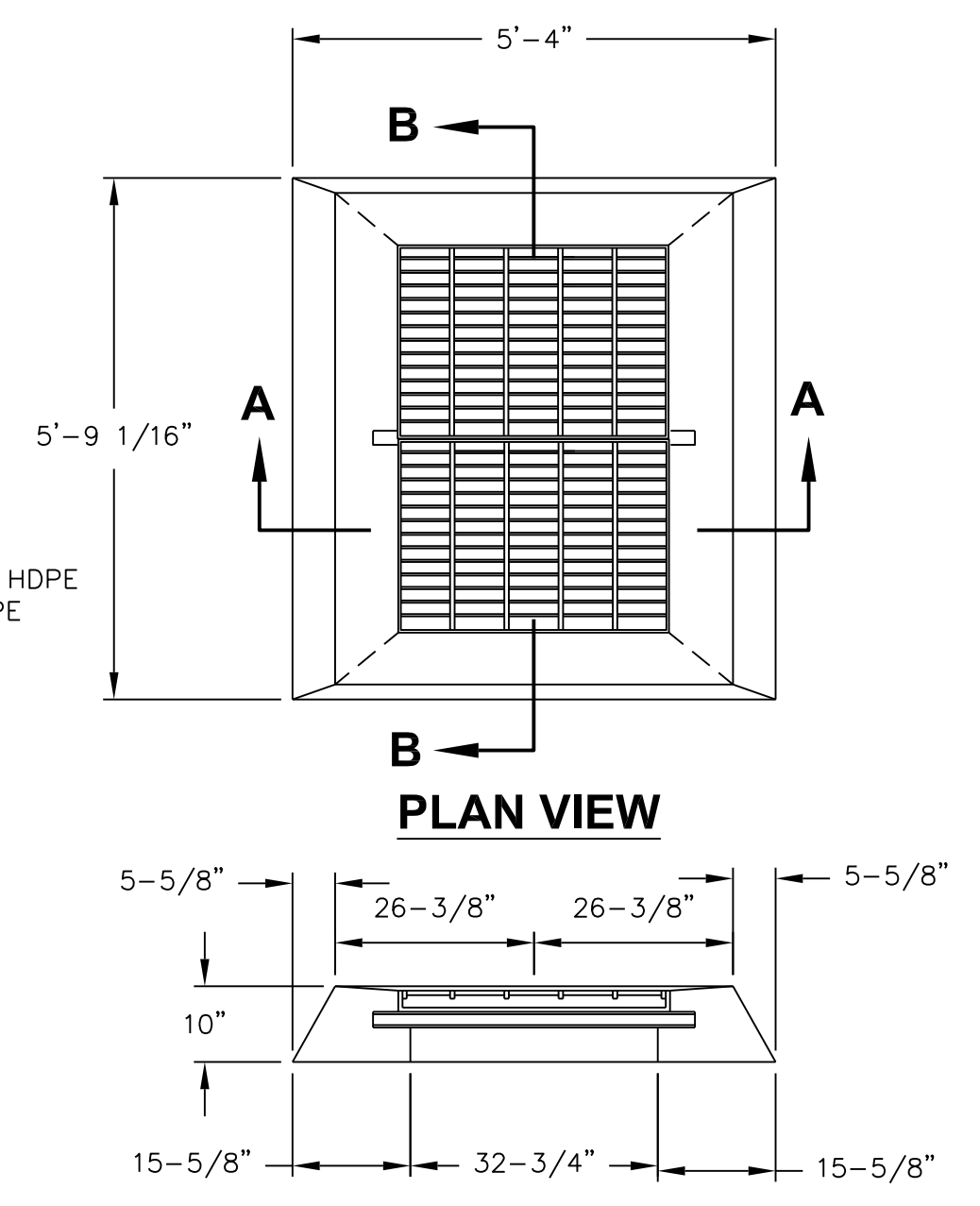


- NOTES:**
- 1) SET TOP OF 2' RISER EVEN WITH BASE OF DOWNCHUTE.
  - 2) CATCH BASIN TO BE CONSTRUCTED IN ACCORDANCE WITH SECTION 5.07 OF THE CONNECTICUT DEPARTMENT OF TRANSPORTATION STANDARD SPECIFICATIONS FOR ROADS, BRIDGES AND INCIDENTAL CONSTRUCTION, FORM B16 USING PRE-CAST CONCRETE STRUCTURES.
  - 3) CUT AND REMOVE SOUTH AND EAST FACING SECTIONS OF 12" CORBEL AND 12" RISER SECTION. CONSTRUCT COLUMN AT SOUTHEAST CORNER OF CATCH BASIN USING CONCRETE BLOCKS AND MORTAR TO SUPPORT TYPE "CL" GRATE.



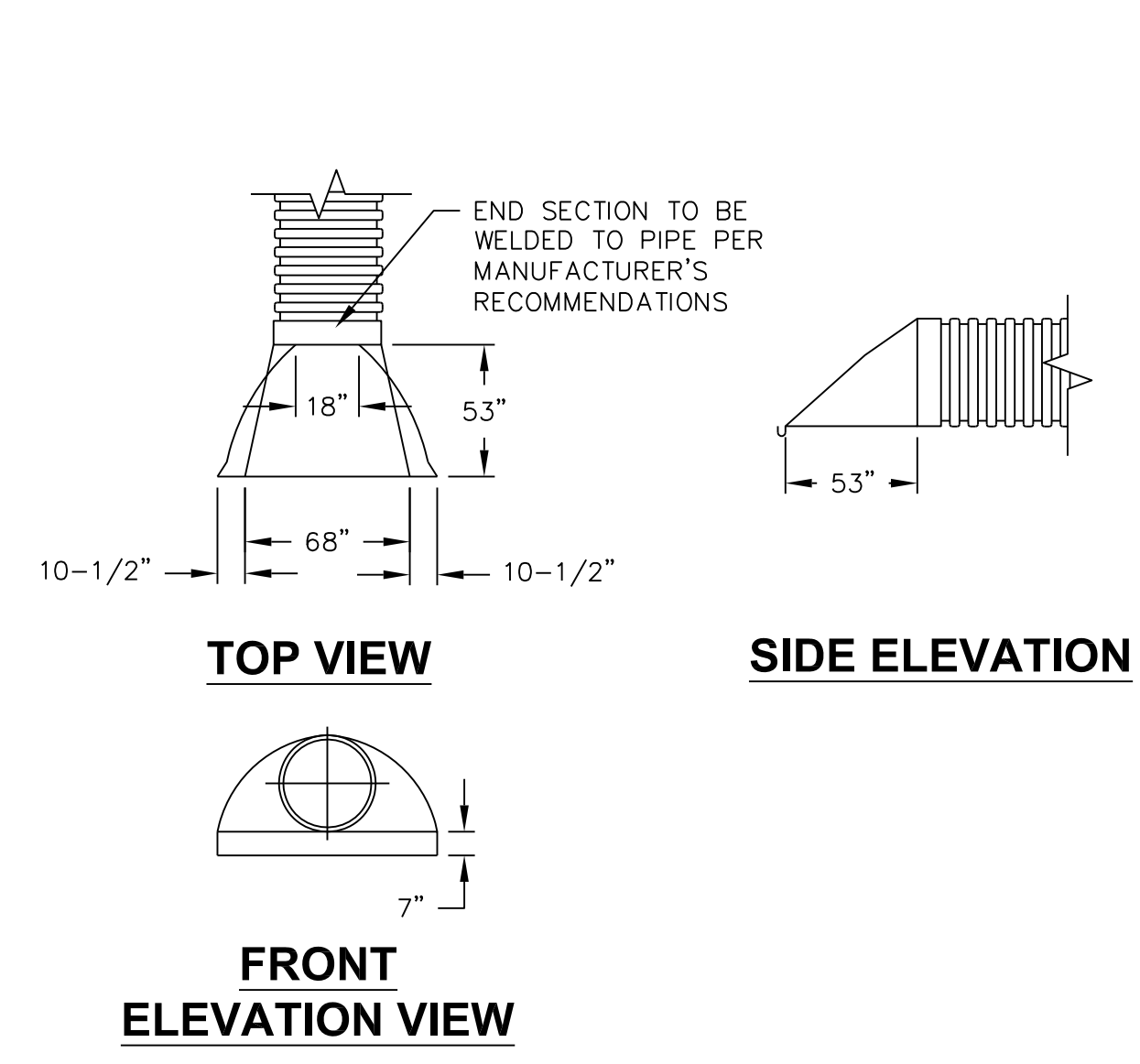
**DOWNCHUTE-SWALE-CATCH BASIN-DRAINAGE PIPE CONNECTION DETAIL**

NTS



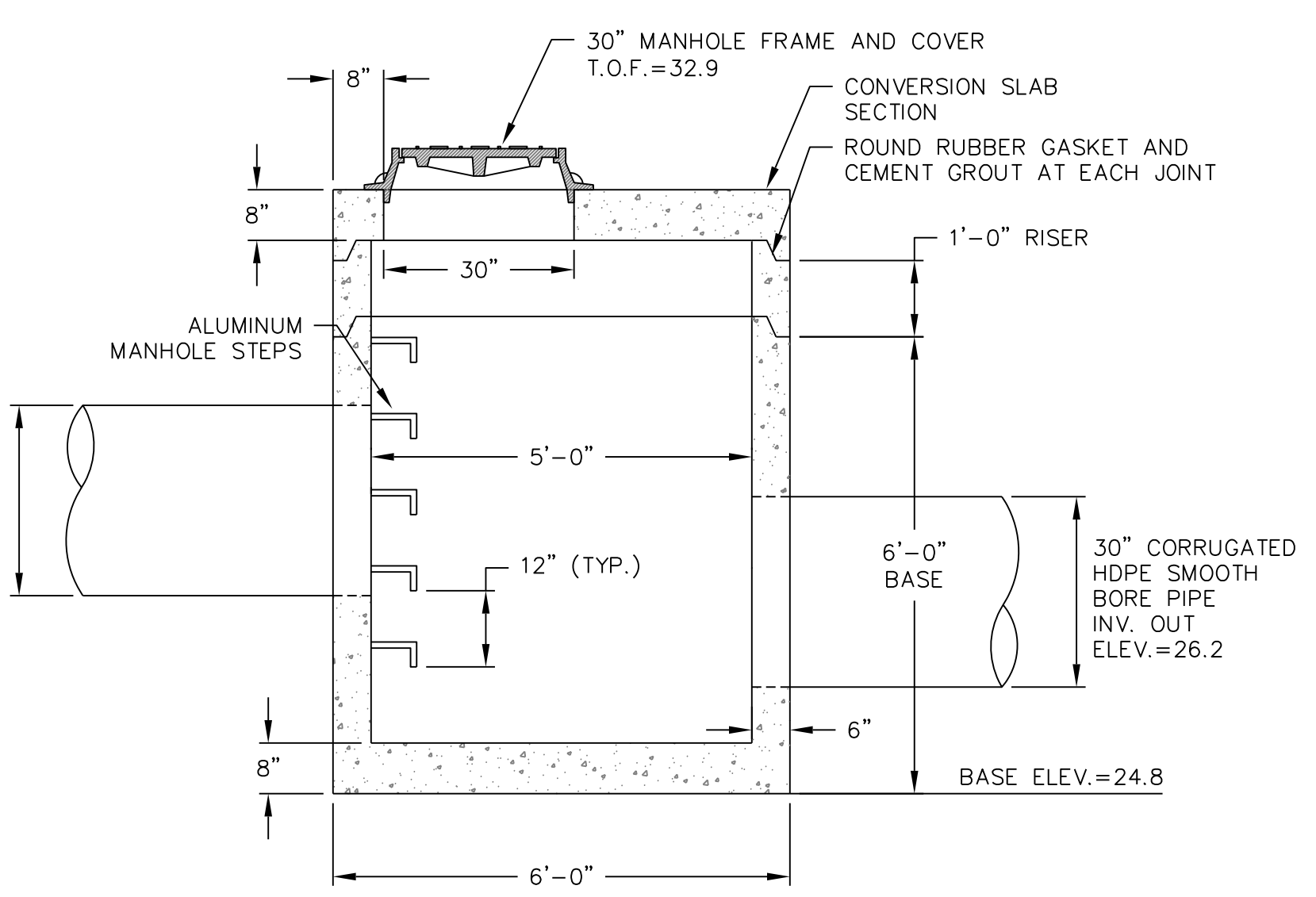
**TYPE "CL" CATCH BASIN GRATE**

NTS



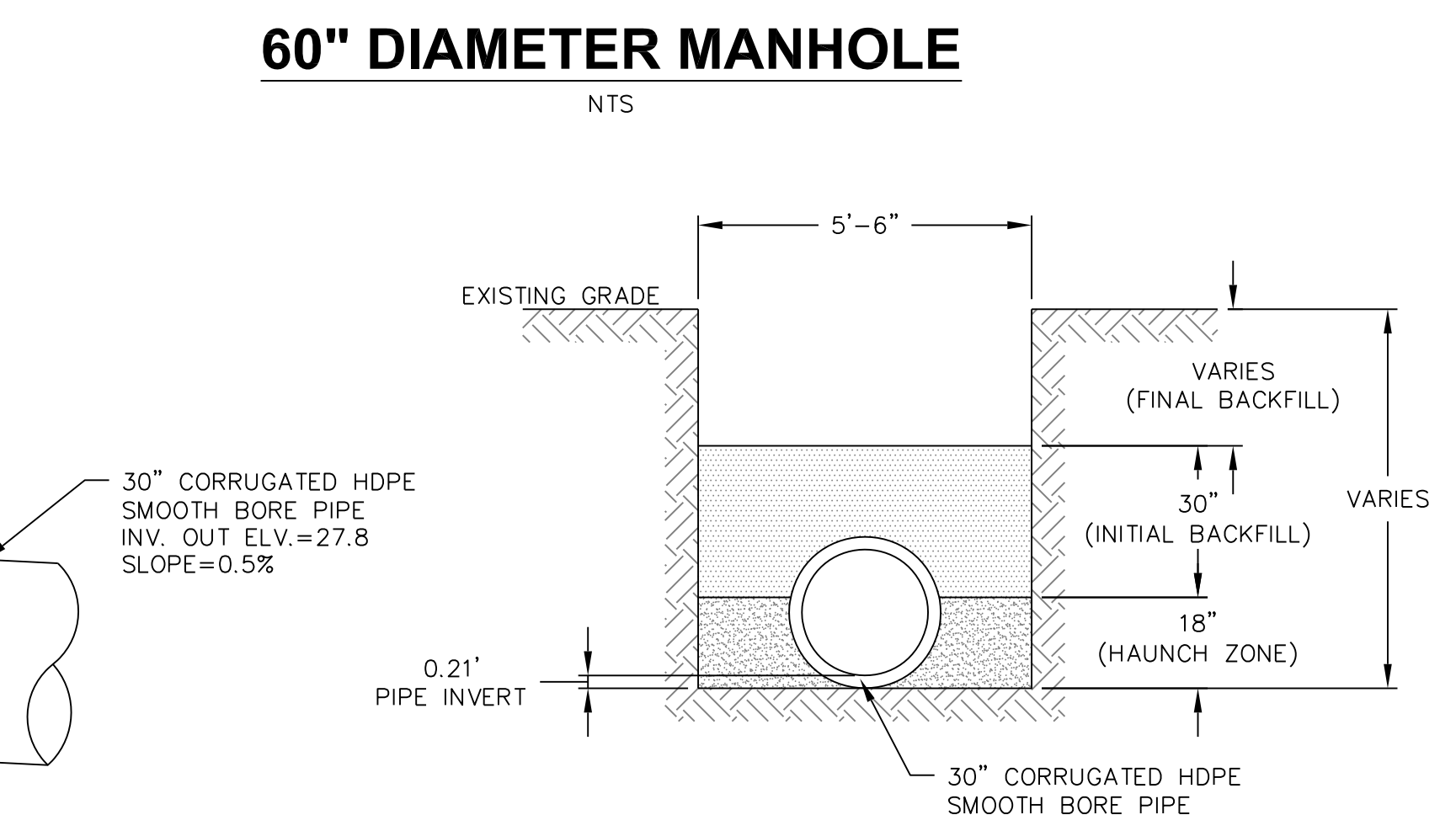
**FLARED HDPE END SECTIONS (FES)**

NTS



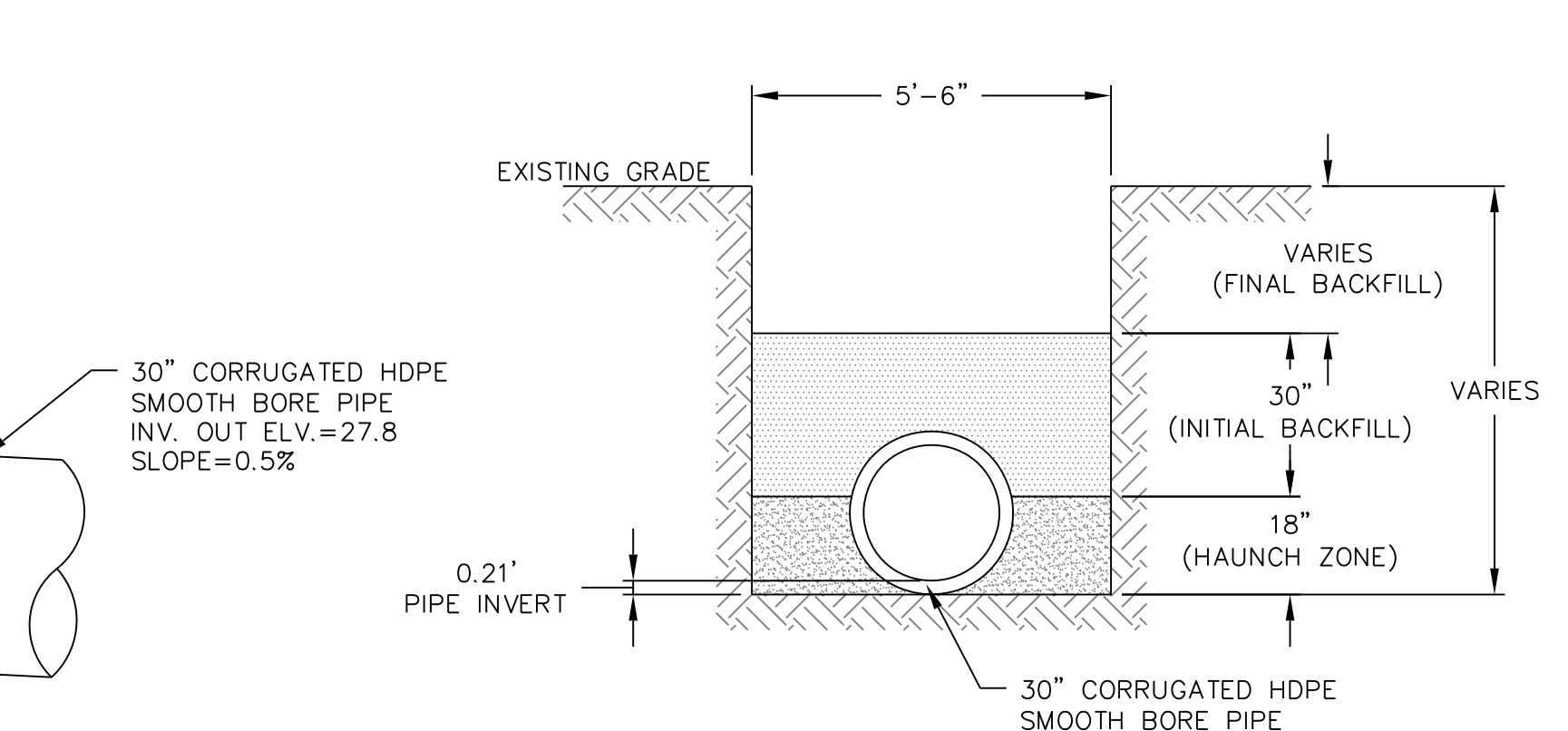
**30" MANHOLE FRAME AND COVER**

NTS



**60" DIAMETER MANHOLE**

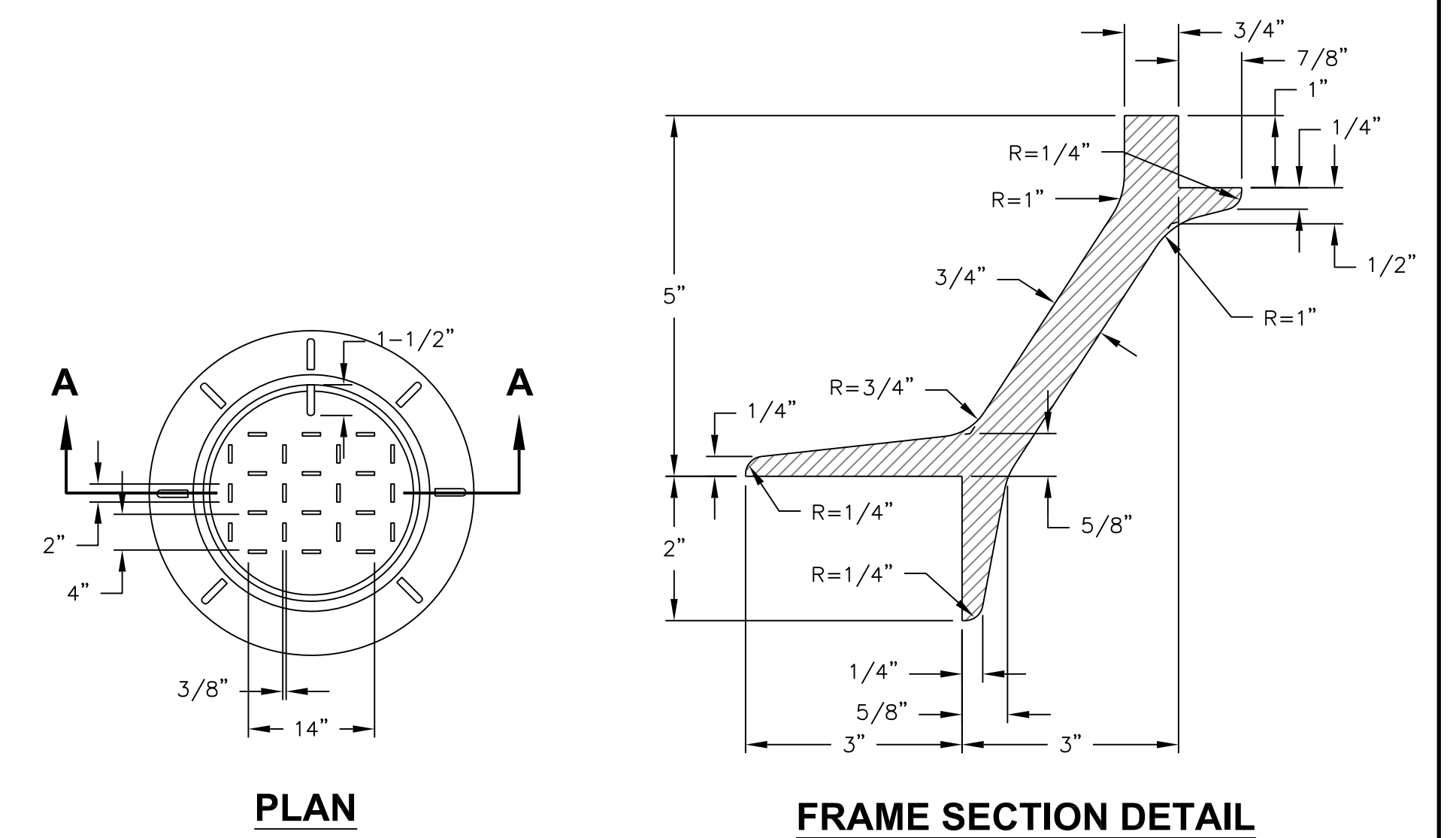
NTS



- NOTES:**
- 1) COMPACT BASE OF TRENCH TO PROVIDE STABLE UNIFORM BEDDING. REMOVE ROCKS OR DEBRIS. DO NOT COMPACT MIDDLE 12 INCHES OF TRENCH, LEAVE THIS SECTION LOOSE, UNIFORM, AND FREE OF DEBRIS FOR PLACING PIPE.
  - 2) ALL BACKFILL LIFTS SHALL BE A MAXIMUM 9 INCHES LOOSE AND THEN COMPACTED.
  - 3) COMPLETE SURFACE GRADE TO PREVIOUSLY EXISTING CONDITIONS.
  - 4) SAW-CUT ASPHALT PRIOR TO EXCAVATING TRENCHES WITHIN PAVED ROADWAY.

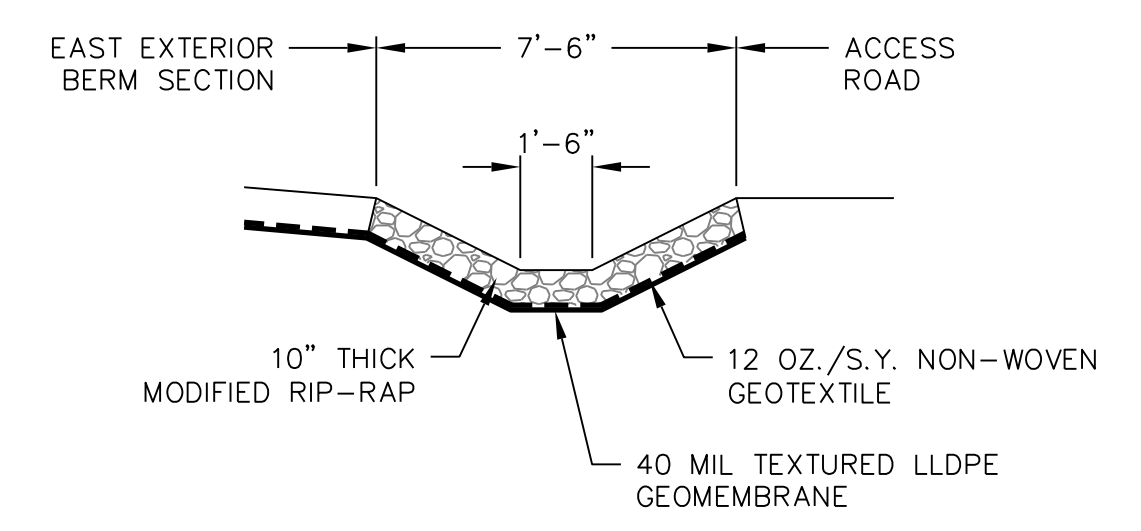
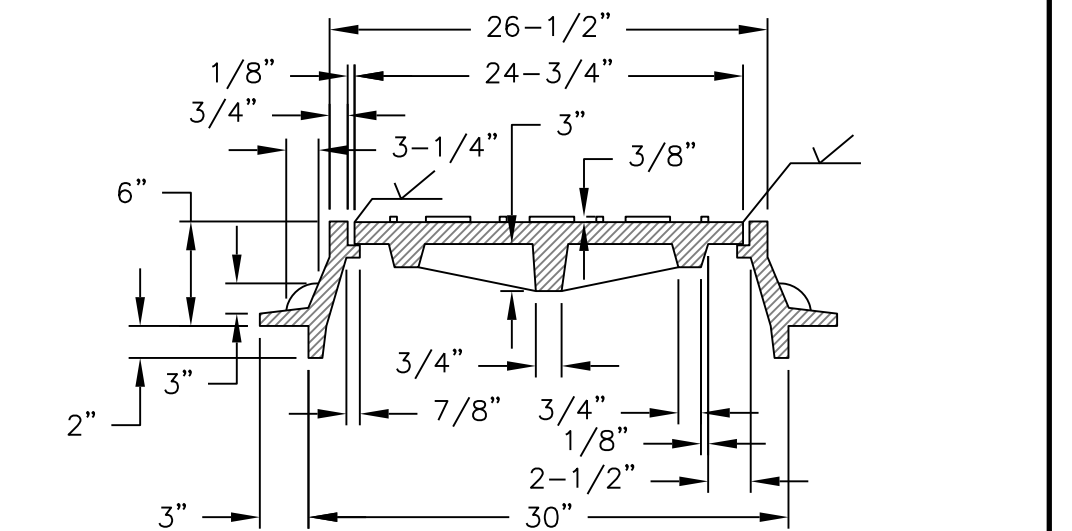
**30" CORRUGATED HDPE SMOOTH BORE PIPE INSTALLATION**

NTS



**NOTES:**

1. MAKE THE MANHOLE FRAME & COVER OF GREY CAST IRON CONFORMING TO THE LATEST ASTM STANDARD A48, CLASS 30 OR BETTER.
2. COAT ALL PARTS OF THE MANHOLE FRAME AND COVER, EXCEPT MACHINED SURFACES WITH ASPHALTUM PAINT.
3. MAKE SURFACE OF THE WORDS "STORM DRAIN" FLUSH WITH THE FINISHED LUG SURFACE OF THE COVER.
4. GIVE MANHOLE FRAME AND COVER A MACHINE FINISH SUCH THAT IT SHALL NOT ROCK.



**NOTES:**

- 1) REMOVE MATERIAL THAT HAS COLLECTED WITHIN SWALE LOCATION. REUSE RIP-RAP WHEREVER POSSIBLE.
- 2) CONTRACTOR WILL BE RESPONSIBLE FOR THE DISPOSAL OF PIPE SECTIONS TO BE REMOVED.

**EAST PERIMETER DRAINAGE SWALE RECONSTRUCTION DETAIL**

NTS

NO.	REVISIONS	DATE	APPROVAL
CONNECTICUT RESOURCES RECOVERY AUTHORITY HARTFORD LANDFILL HARTFORD, CONNECTICUT			
HARTFORD LANDFILL PHASE I ASH AREA FINAL CLOSURE			
DRAINAGE DETAILS			
DESIGN: MAB 03/02/09 DRAWN: KDH 03/02/09 CHECKED: CNS 03/02/09 SCALE: NTS PROJECT: 153306-000260-000006 DRAWING:			
<b>D-5</b>			