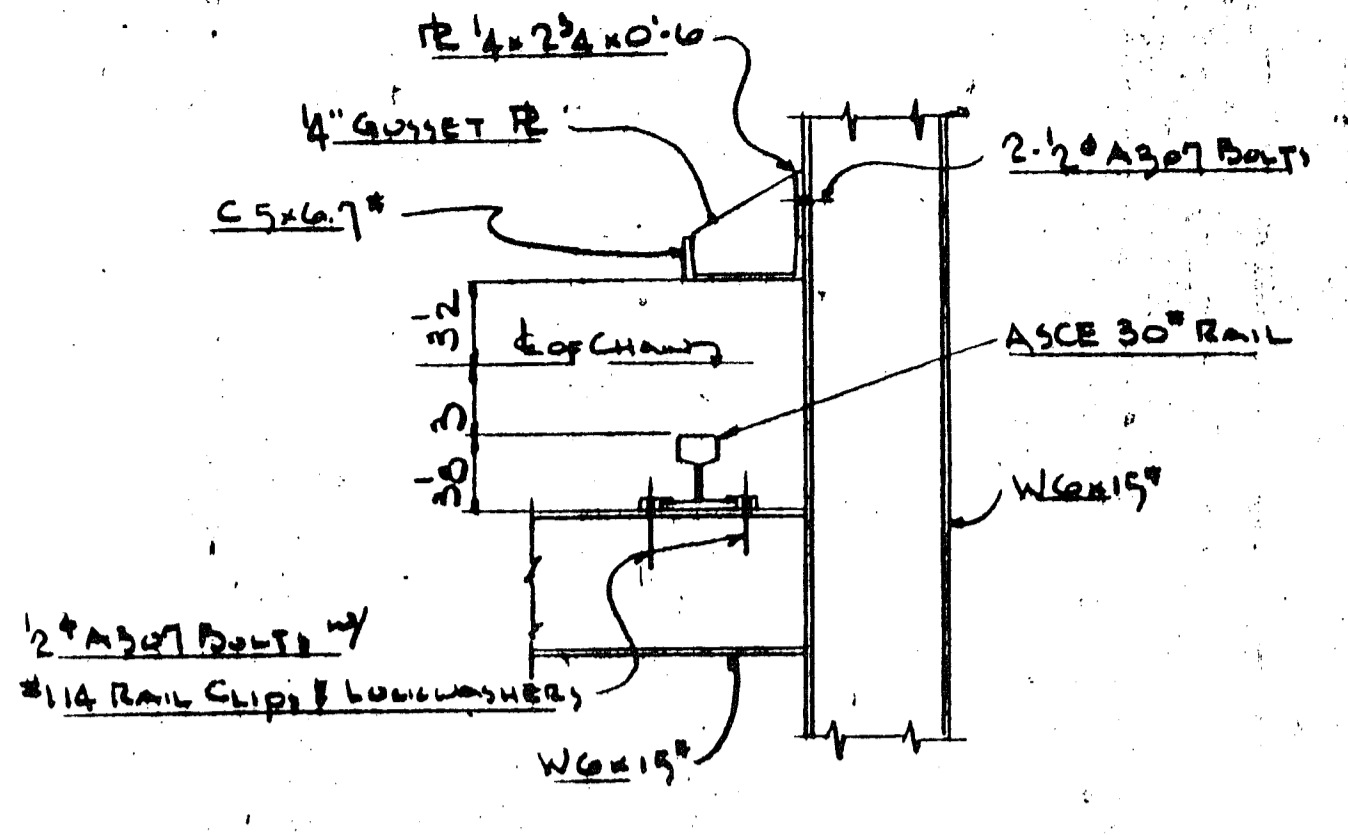
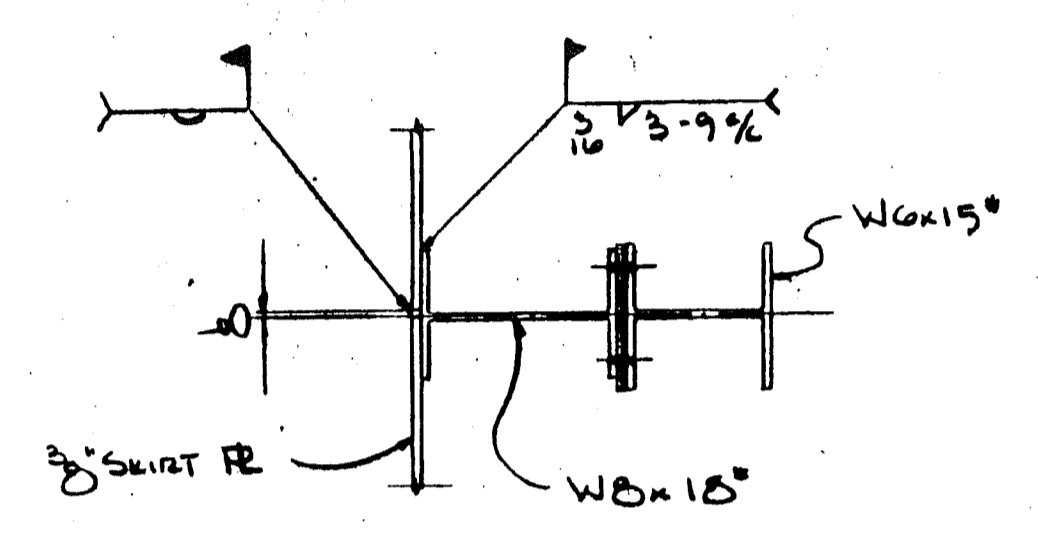


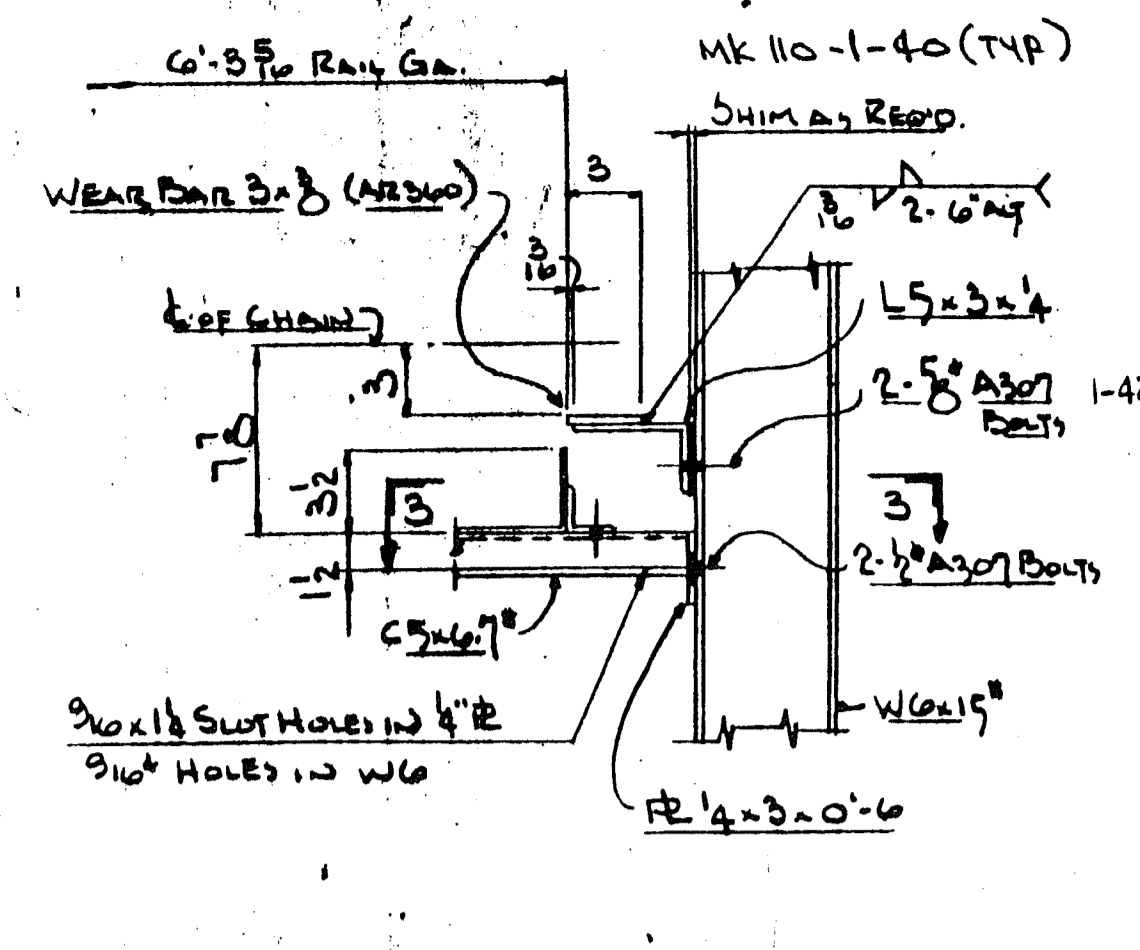
TYPICAL SECTION 'A-A'



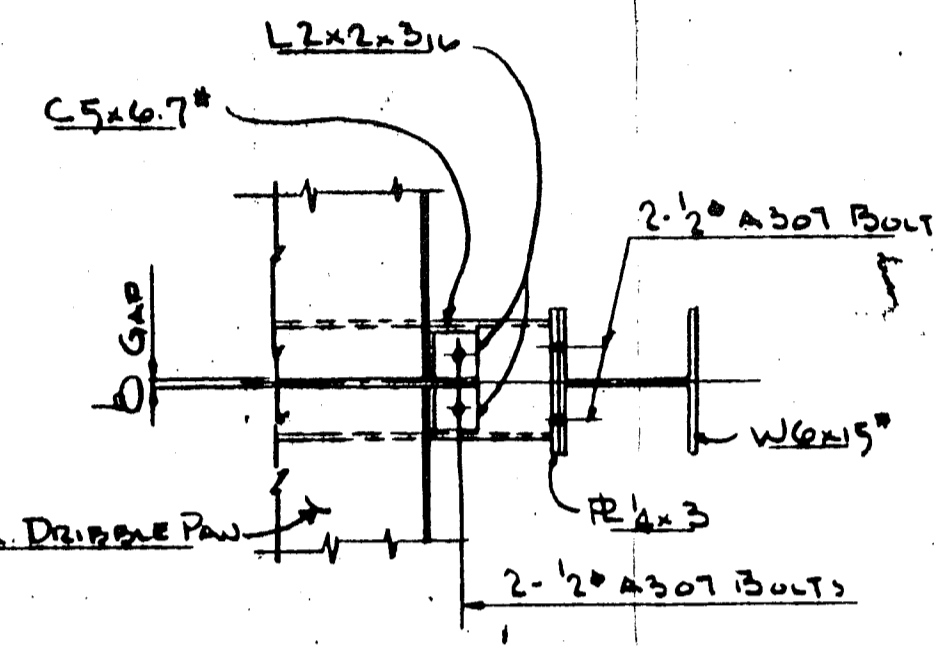
TYPICAL DETAIL 1  
SCALE 1/2\"/>



TYPICAL SKIRT FIELD SPLICE  
SCALE 1/2\"/>



TYPICAL DETAIL 2  
SCALE 1/2\"/>



SECTION 3-3  
SCALE 1/2\"/>

- GENERAL NOTES!**
- 1 ALL STRUCTURAL STEEL TO BE ASTM A36 (F<sub>y</sub> 36000 PSI) UNLESS NOTED.
  - 2 ALL WELDING TO BE DONE IN ACCORD WITH AWS STRUCTURAL WELDING CODE USING E70XX ELECTRODE.
  - 3 DESIGN AND FABRICATION TO BE IN ACCORD WITH LATEST AISC SPECIFICATION.
  - 4 ALL BOLTED CONNECTIONS TO BE ASTM A307 BOLTS UNLESS NOTED. SEE DETAILS FOR SIZE & NUMBER.
  - 5 MINIMUM FIELD CONNECTION FOR ANGLE BRACING SHALL BE 2-3\"/>

- MATERIALS AND SERVICES TO FURNISHED BY OTHERS:**
- 1 MAINTENANCE PLATFORMS AS REQUIRED.
  - 2 VARIABLE FREQUENCY MOTOR CONTROLLERS.
  - 3 ELECTRICAL CONTROLS AND WIRING EXCEPT AS SPECIFIED IN OUR PROPOSAL.
  - 4 FOUNDATIONS WITH ANCHOR BOLTS SET IN PLACE.
  - 5 FIRE PROTECTION SYSTEM.
  - 6 INSTALLATION AND START-UP.

LIST OF COMPONENTS		REV	REV	REV	REV	REV
REF. SYMBOL	QUANTITY	PART NUMBER	PART NAME OR MATERIAL SIZE AND DESCRIPTION	MATERIAL SPEC.	LENGTH	WEIGHT
MATERIAL FOR ONE 72" WIDE - C2614-M14 APPROX CONVEYOR						
1	74	635-6090-87	1-1/2 FT OF 72" WIDE STYLE 'A' C2614-M14 APPROX CONVEYOR ASSEMBLY CONSISTING OF: 72" WIDE X 12" PITCH X 3/8" THICK DOUBLE DECEDED STYLE 'A' PANS 1/2 BOX SECTION REINFORCED, TWO ROWS OF IMPACT SHOES AND 2 X 4 HIGH ENDS MOUNTED ON TWO STRANDS OF C2614-M14 CHARLEVOIX STEEL CHAIN WITH TRIL-LOW SADDLES MOUNTED TO PAN BOTTOM EVERY PITCH & SECURED TO CHAIN BY MEANS OF 1 1/2 SQ. DRUB SHAFTS SPACED MID-PITCH EVERY LHM. STUDS SHALL BE FITTED WITH 6" STYLE #2 BOLTS EVERY PITCH. PANS TO HAVE CLEAN OUT PUSHERS.			
2	1	919451-10-101	FOOT SHAFT ASSEMBLY CONSISTING OF: 1-3 1/2" AISI 316L2 CF8 SHAFT 2-REX #2614-6T-24.00 PD FARE. STEEL SPURT W/HARDENED TEETH (BORE X.5 X.33 ONE OTHER TO BOTTOM) 2-3 1/2" STEEL SET COUPLER			
1-4			MODEL XVK 30789	1-AMHTIO-5307-12 HEAVY DUTY SPRING LOADED TU BRG. ASSEMBLY		
1-5			MODEL XVJ 30789	1-AMHTIO-5307-12 HEAVY DUTY SPRING LOADED TU BRG. ASSEMBLY		
1-16				1-4 1/2" AISI 316L2 CF8 SHAFT		
1-17				2-REX #2614-6T-24.00 PD FARE. STEEL SPURT W/HARDENED TEETH (BORE X.5)		
2-1	3	919451-210-100	HEAD SHAFT ASSEMBLY CONSISTING OF: 1-AMP-5407-F PILLON BLOCK 1-BMP85407-Y-F PILLON BLOCK 1-#290-43T-34.250 PD. CUT TOOTH STL. SPURT W/HARDENED TEETH (BORE X.5)			
1-12				1-AMP-5407-F PILLON BLOCK		
1-13				1-BMP85407-Y-F PILLON BLOCK		
1-19				1-#290-43T-34.250 PD. CUT TOOTH STL. SPURT W/HARDENED TEETH (BORE X.5)		
4	1		DRIVE ARRANGEMENT CONSISTING OF: 1-REX "EARTH" CONCENTRIC SHAFT PLANETARY GEAR SPEED REDUCER @ 11.8 RPM OUTPUT SPEED 2.03 SERVICE FACTOR, COMPLETE W/ODIN TORQUE LIMITER COUPLING			
1-29				1-7/2 H.P. TEFC MOTOR @ 1200 RPM (254T FRAME)		
1-34				1-#200B15-12.025 PD. CUT TOOTH STL. SPURT W/HARDENED TEETH (BORE 1 1/2)		
1-24				1-5 STRAND #200 ROLLER CHAIN		
2-5				1- OIL TIGHT CHAIN GUARD		
1-43	5	2	#AFU 0333-11	CROUSE-HINDS EMERGENCY STOP SWITCHES COMPLETE W/CABLES AND FITTINGS		
1-44				ZERO SPEED SWITCH - ELECTRO SENSORS MODEL 35100 W/MAGNETIC DISK & MOUNTING BRACKET		
1-45				115 VAC, 60HZ, RELAY SA, SPDT, FORM C CONTACTS, ENCLOSURE NEMA 4		

WORK THIS DRAWG. WITH DRAWG. G19451-2-1

CUST. UNIT # 101

REVISION NO.	REVISION BY/DATE OR ECR
1	...
2	...

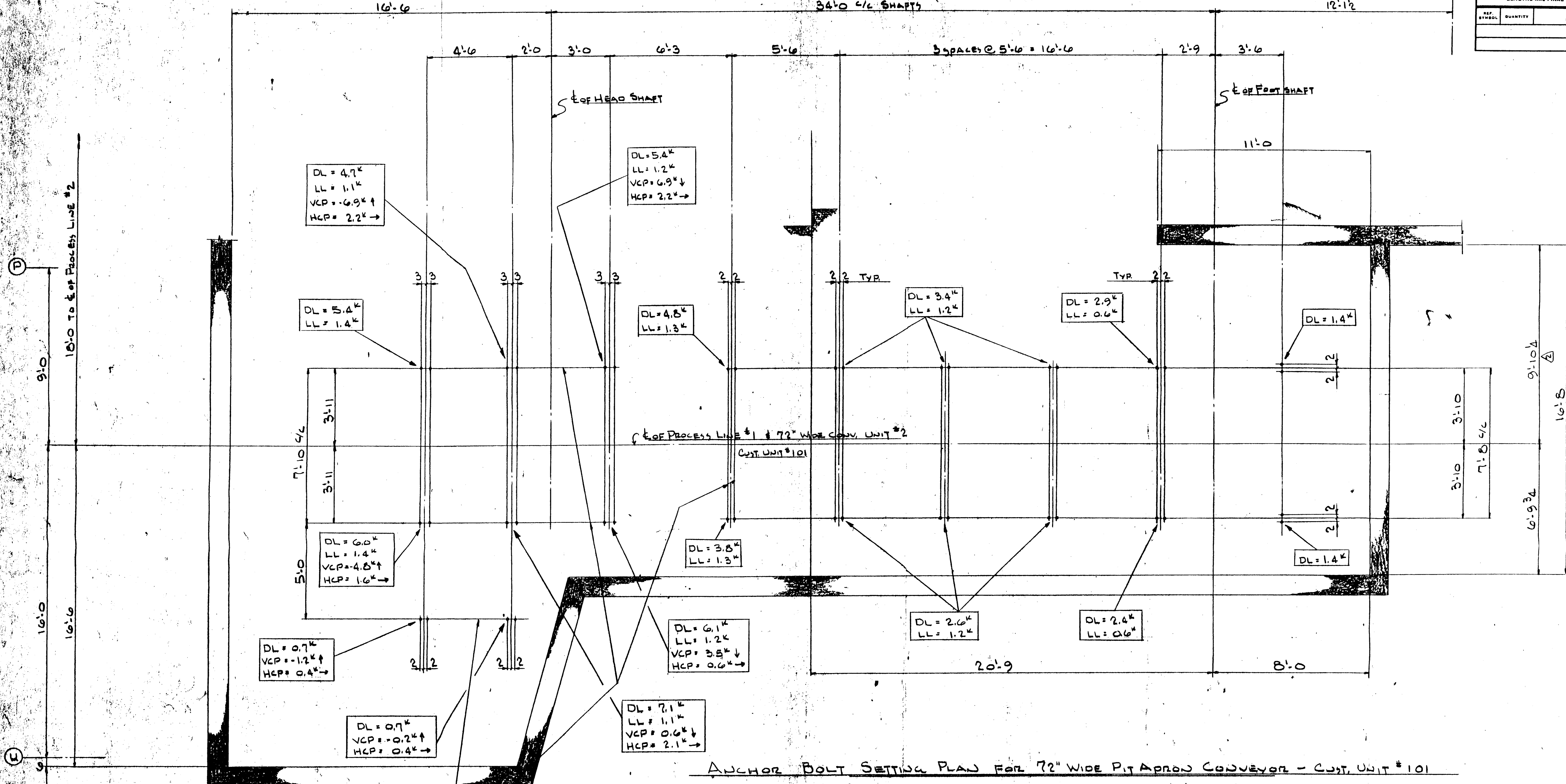
**ERECTOR NOTE:**  
Corrections of minor misfits and a reasonable amount of cutting and reaming are considered a part of erection. Any error which prevents assembly by moderate use of drift pins. Cutting and welding is to be reported and approval of correction or change is to be received in writing before proceeding.  
Failure to comply will relieve Rexnord Inc. of all operational and monetary responsibility.

**SAFETY CONSIDERATIONS:**  
Safety features included within the scope of equipment supply are shown on contract drawings. Complete conformance with all applicable safety codes is the responsibility of the owner.  
Codes which are commonly applicable to safety related considerations for this equipment include, but are not limited to, ASME B15.1, ASME B20.1, OSHA, and MSHA.

DRAWN BY	DATE	CUSTOMER
QC	10-24-85	CONSTRUCTION EQUIPMENT
APPROVED BY	DATE	ENGINEER
...	11-27-85	...
TITLE	CUSTOMER ORDER NO.	ESTIMATE NO.
SECTIONS & DETAILS FOR 72" WIDE C2614-M14 APPROX CONVEYOR	256-B04-M6A05	7722-A1

CERTIFICATION: DO NOT USE FOR CONSTRUCTION UNLESS CERTIFIED  
 Charles P. Winkler 1-8-86  
 CONFIDENTIAL - ALL RIGHTS RESERVED  
**Rexnord Inc.**  
 Mechanical Power Division  
 CONVEYING EQUIPMENT OPERATION  
 MILWAUKEE, WISCONSIN 53201  
 PART OR ORDER NO. G19451  
 DRAWING NO. G19451-2-2  
 DIV. NO. 35  
 CANADA COPY

LIST OF COMPONENTS				WEIGHT	DRAWING NO.
TITLE	UNIT	ITEM	REV.	PART OR ORDER NO.	REFERENCE DRAWING NO.
NOTE: REFERENCE SYMBOLS WHERE SHOWN ARE TO ASSIST IN LOCATING COMPONENTS IN DIFFERENT VIEWS OF THIS DRAWING ONLY. ALL LENGTHS ARE FINAL LENGTHS UNLESS SPECIFIED AS ROUGH ("RGH").					
REF. SYMBOL	QUANTITY	PART NUMBER	PART NAME OR MATERIAL SIZE AND DESCRIPTION	MATERIAL SPEC.	LENGTH
					FEET INCHES



ANCHOR BOLT SETTING PLAN FOR 72" WIDE PIT APRON CONVEYOR - CUST. UNIT # 101

NOTE: 20-3/4" ANCH-BOLTS w/2 1/2" PROJECTION ABOVE ELEV. 13'-9" & 3" THRO.

NOTE: ALL ANCHOR BOLTS TO BE 3/4" ANCH-BOLTS w/2 1/2" PROJECTION ABOVE ELEV. 13'-9" & 3" THRO. - UNLESS NOTED.

LOAD KEY	
DL	= DEADLOAD
LL	= LIVELOAD
VCP	= VERT. CHAIN PULL LOAD
HCP	= HORIZ. CHAIN PULL LOAD

WORK THIS DRAW. WITH DRAW. G19451-2-1

PART SPECIFICATION	
MATERIAL SPECIFICATION NO.	
PROCESS SPECIFICATION NO.	
DISTRIBUTION OF TRACINGS	

**ERECTOR NOTES:**  
Corrections of minor misfits and a reasonable amount of cutting and reaming are considered a part of erection. Any error which prevents assembly by moderate use of drift pins. Cutting and welding is to be reported and approval of correction or change is to be received in writing before proceeding.  
Failure to comply will relieve Rexnord Inc. of all operational and monetary responsibility.

**SAFETY CONSIDERATIONS:**  
Safety features included within the scope of equipment supply are shown on contract drawings. Complete conformance with all applicable safety codes is the responsibility of the owner.  
Codes which are commonly applicable to safety related considerations for this equipment include, but are not limited to, ASME B15.1, ASME B20.1, OSHA, and MSHA.

DRAWN BY	DATE	CUSTOMER
JOM.	10-29-85	COMBUSTION ENGINEERING
CHECKED BY	DATE	INSTALLED AT
APPROVED BY	DATE	ENGINEER
APPROVED BY	DATE	CUSTOMER ORDER NO.
SCALE	ESTIMATE NO.	GENERAL DRAWING NO.
3/8" = 1'-0"	7722-A1	
	TITLE	UNIT
	72" WIDE PIT APRON CONV. - CUST. UNIT # 101	2

CERTIFICATION: DO NOT USE FOR CONSTRUCTION UNLESS CERTIFIED

CERTIFIED BY: Charles P. Winkler DATE: 1-8-86

CONFIDENTIAL - ALL RIGHTS RESERVED

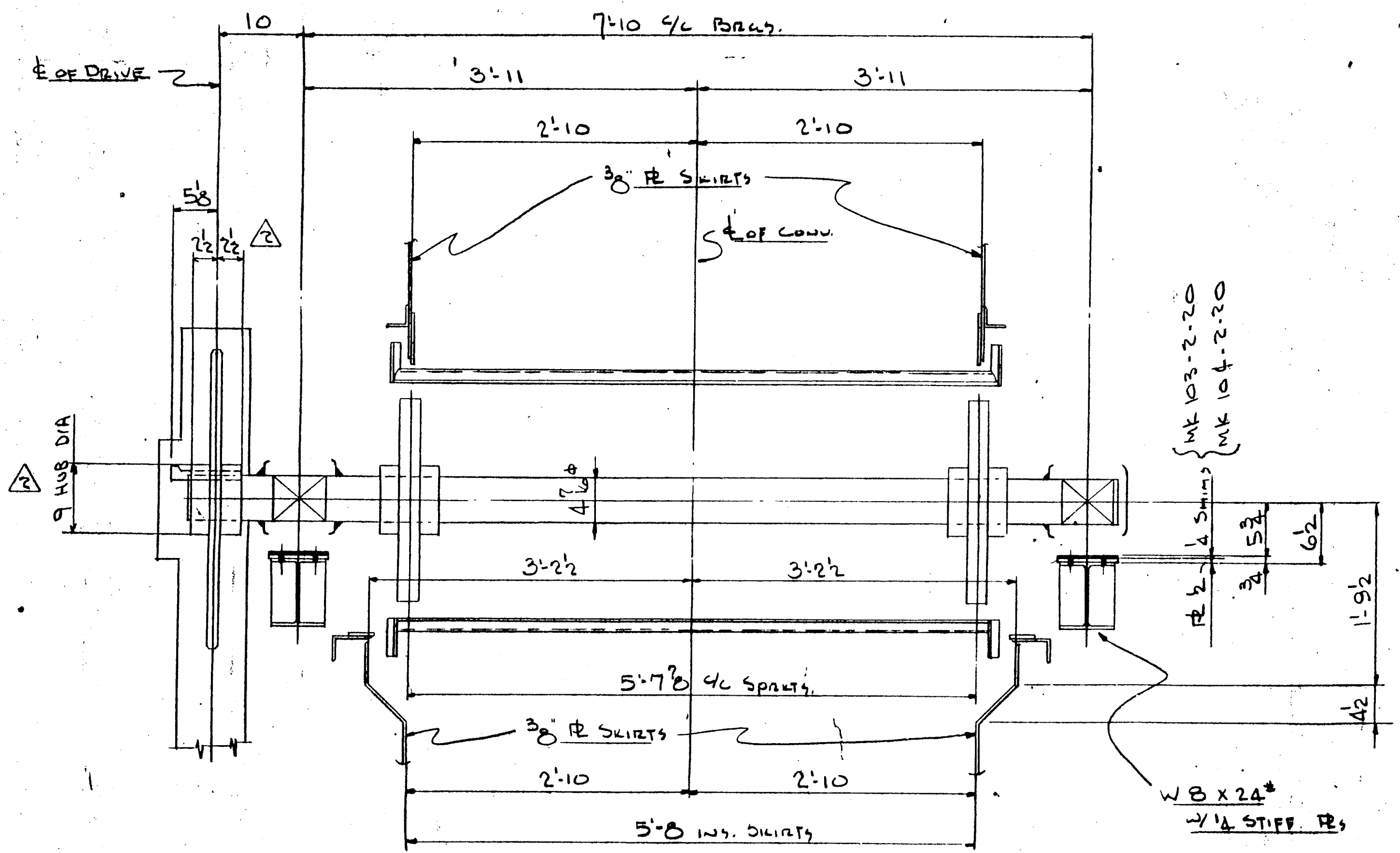
**Rexnord Inc.**  
Mechanical Power Division  
CONVEYING EQUIPMENT OPERATION  
MILWAUKEE, WISCONSIN 53201

PART OR ORDER NO. G19451 DRAWING NO. G19451-2-3 REV. 1

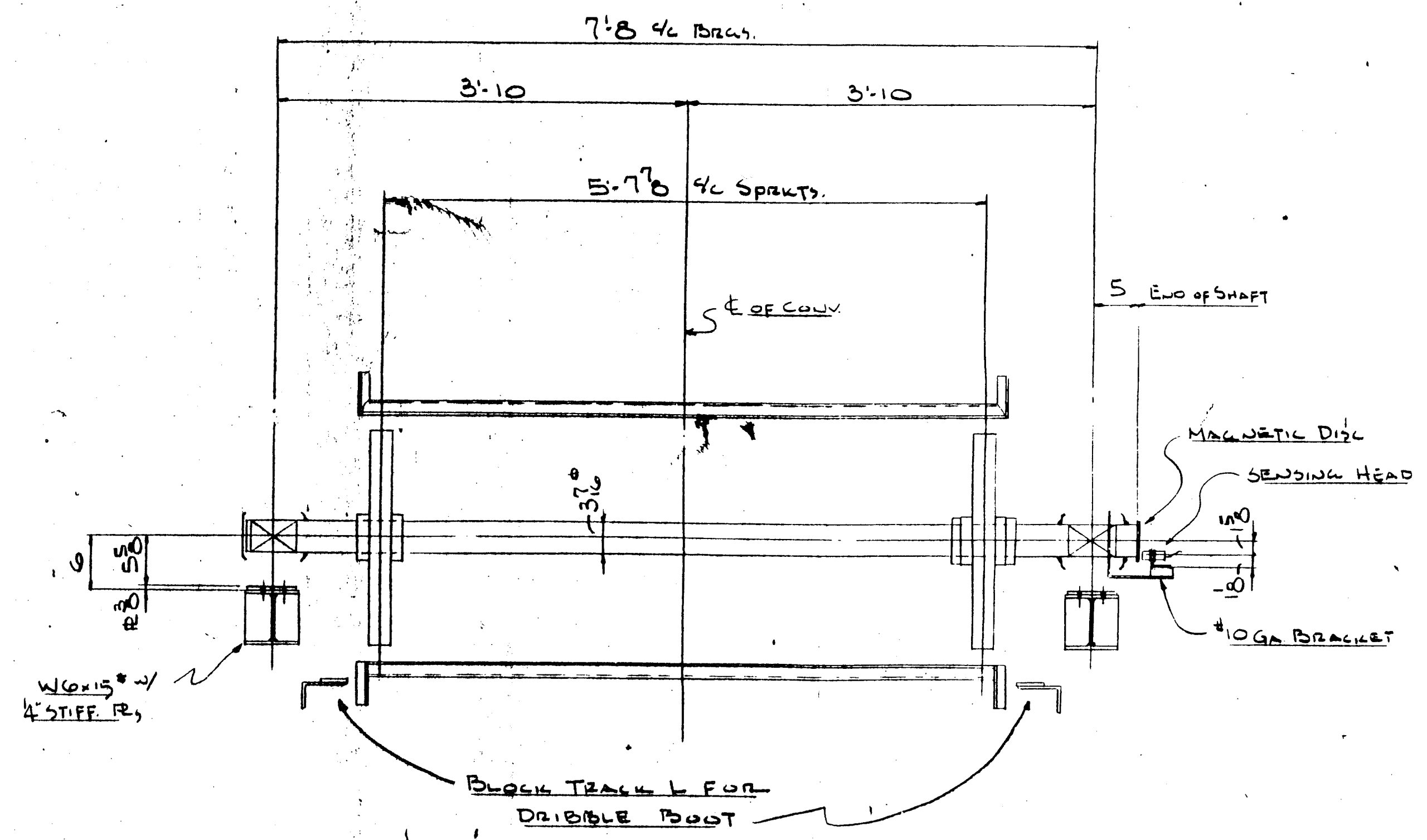
DIV. NO. 35

CANADA COPY

LIST OF COMPONENTS				WEIGHT	DRAWING NO.
TITLE	UNIT	ITEM	REV.	PART OR ORDER NO.	REFERENCE DRAWING NOS.
NOTE: REFERENCE SYMBOLS WHERE SHOWN ARE TO ASSIST IN LOCATING COMPONENTS IN DIFFERENT VIEWS OF THIS DRAWING. ONLY ALL LENGTHS ARE FINAL LENGTHS UNLESS SPECIFIED AS ROUGH ("RGN")					
REP. SYMBOL	QUANTITY	PART NUMBER	PART NAME OR MATERIAL SIZE AND DESCRIPTION	MATERIAL SPEC.	LENGTH

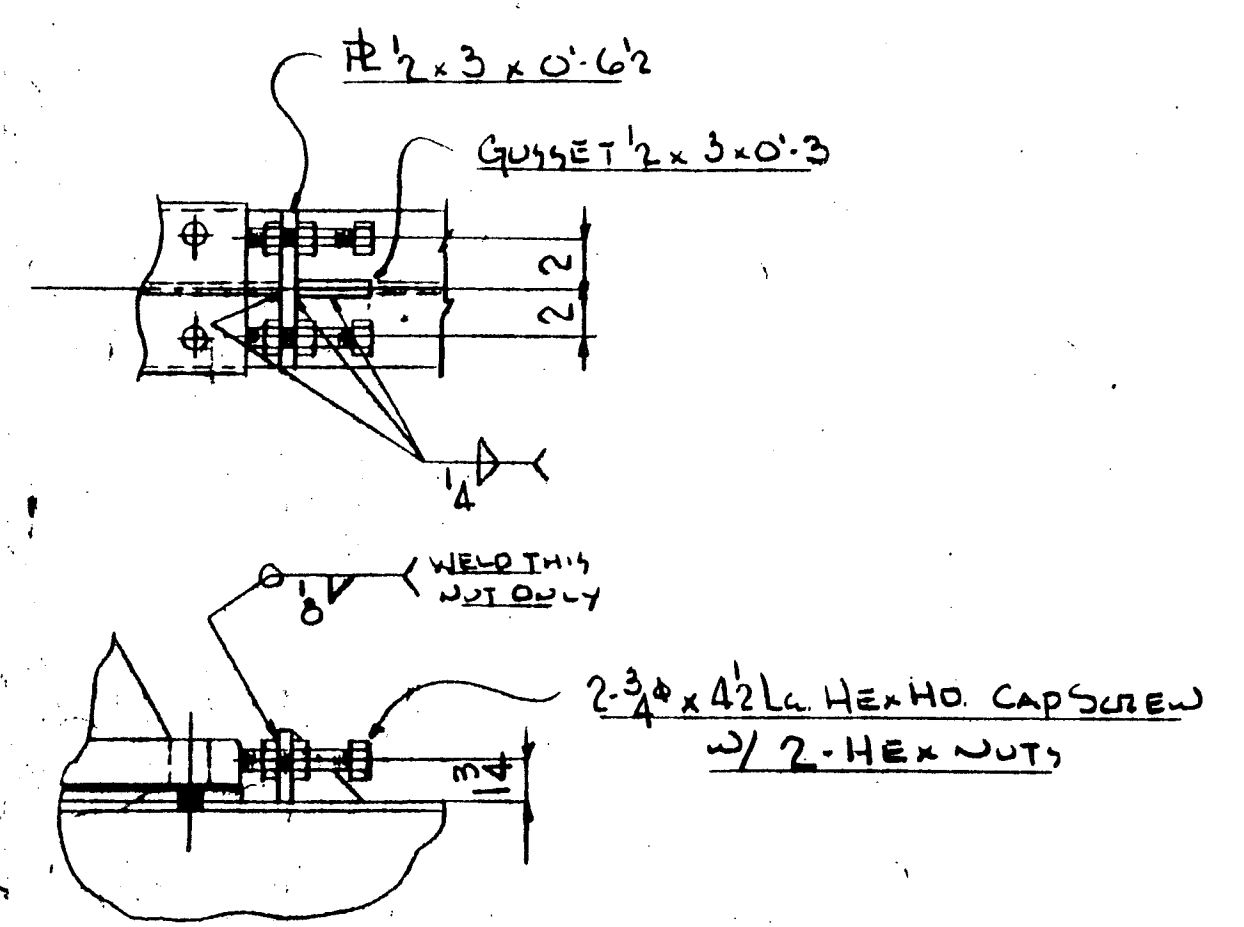


SECTION B-B



NOTE: DRIBBLE BOOT NOT SHOWN FOR CLARITY

SECTION C-C



HEAD SHAFT BEARING JACK SCREW DETAIL (SCALE 1/2 = 1:0)

WORK THIS DRAWING WITH DRAWING G19451-2-1

CUST. UNIT # 101

REVISION NO.	REVISION BY/DATE	REVISION BY/DATE OF E.O.

**ERECTOR NOTE:**  
Connections of minor misfits and a reasonable amount of cutting and reaming are considered a part of erection. Any error which prevents assembly by moderate use of drift pins, cutting and welding is to be reported and approval of correction or change is to be received in writing before proceeding.  
Failure to comply will relieve Rexnord Inc. of all operational and monetary responsibility.

**SAFETY CONSIDERATIONS:**  
Safety features included within the scope of equipment supply are shown on contract drawings. Complete conformance with all applicable safety codes is the responsibility of the owner.  
Codes which are commonly applicable to safety related considerations for this equipment include, but are not limited to, ASME B18.1, ASME B30.1, OSHA, and MSHA.

DRAWN BY JDM	DATE 10-30-85	CUSTOMER COMBUSTION EQUIPMENT
CHECKED BY NCC	DATE 11-26-85	INSTALLED AT
APPROVED BY [Signature]	DATE 11-27-85	ENGINEER
SCALE 1" = 1'-0" U.S.	CUSTOMER ORDER NO. 250-8010-MC403	ESTIMATE NO. 7722-A1
DIMENSION IN INCHES UNLESS SPECIFIED	TITLE SECTIONS AND DETAILS FOR HORIZONTAL PIP APRON CONVEYOR	GENERAL DRAWING NO.

CERTIFICATION: DO NOT USE FOR CONSTRUCTION UNLESS CERTIFIED

CERTIFIED BY: Charles P. Wymet DATE: 1-8-86

CONFIDENTIAL - ALL RIGHTS RESERVED

**Rexnord Inc.**  
Mechanical Power Division  
CONVEYING EQUIPMENT OPERATION  
MILWAUKEE, WISCONSIN 53201

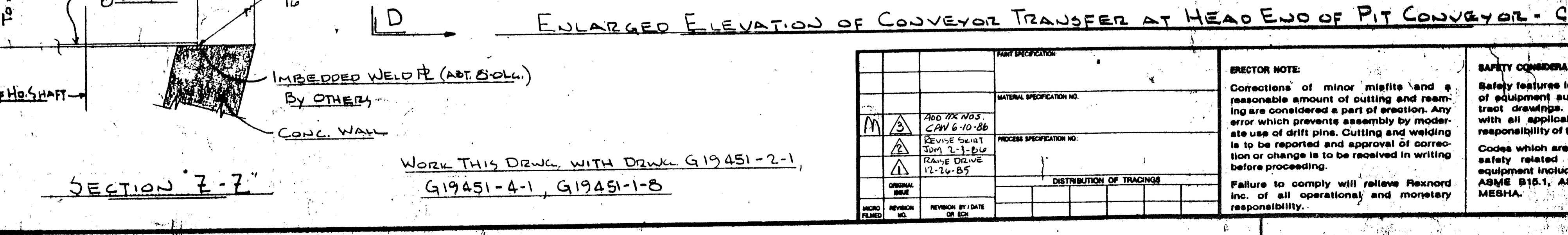
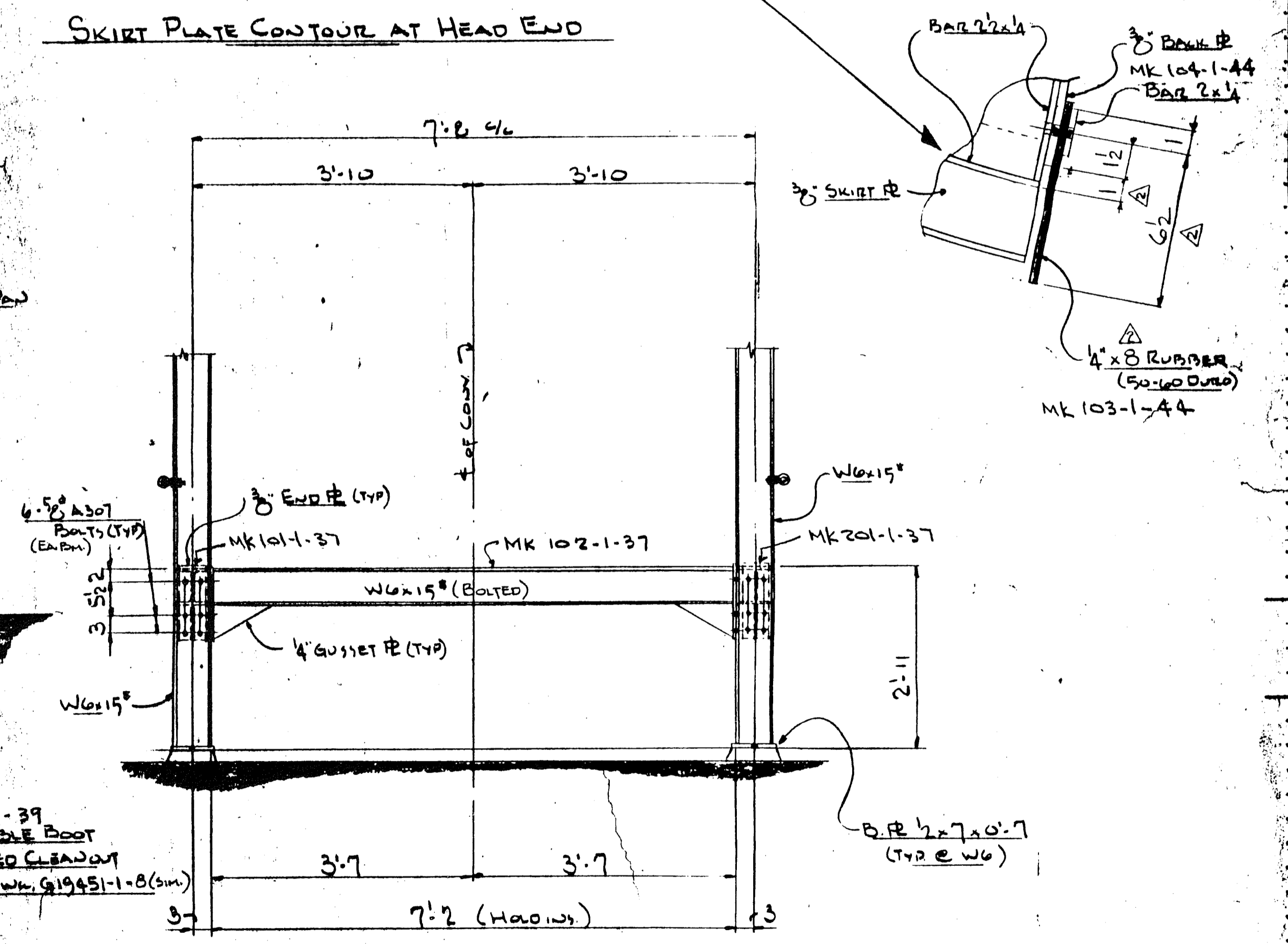
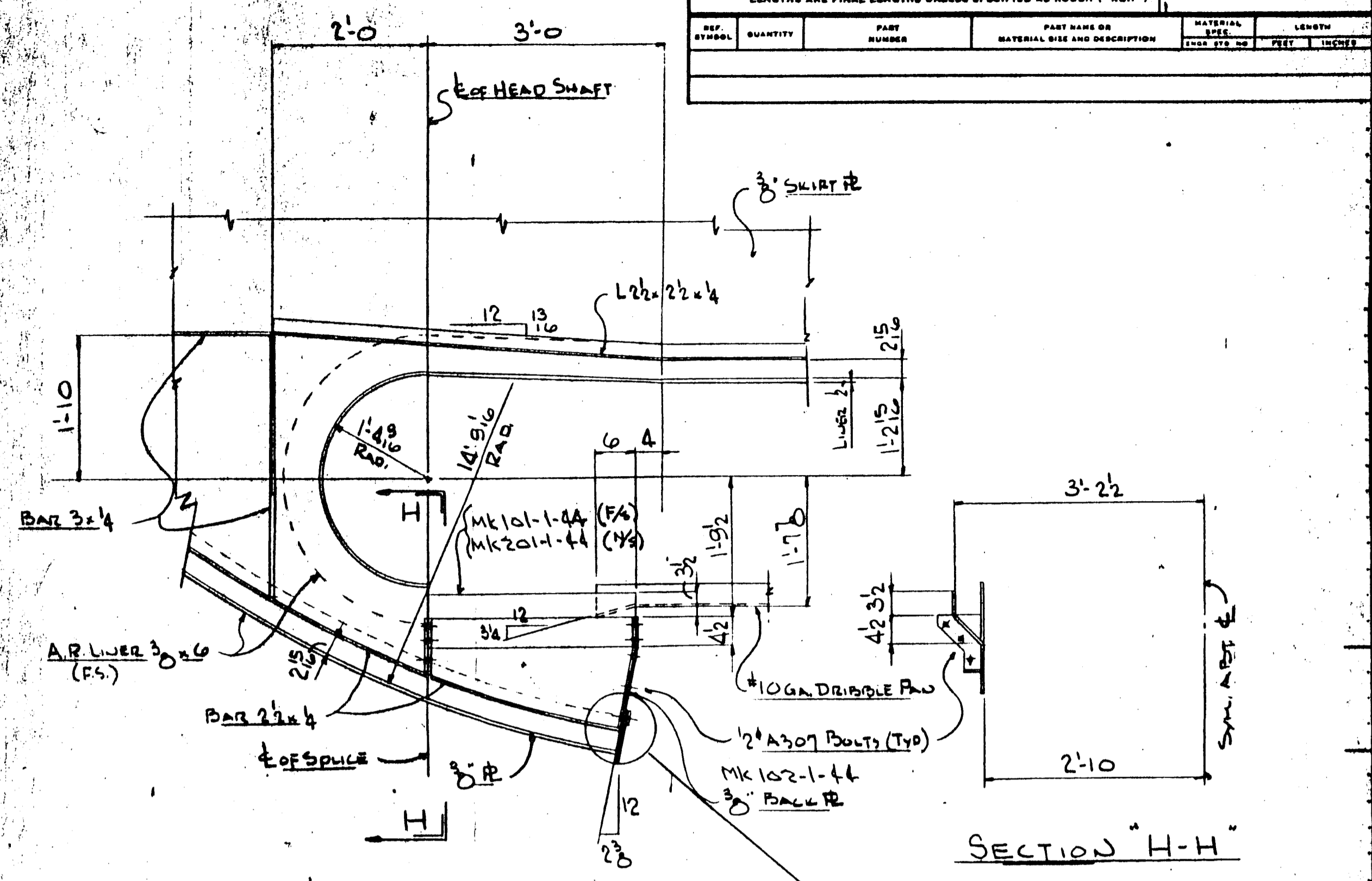
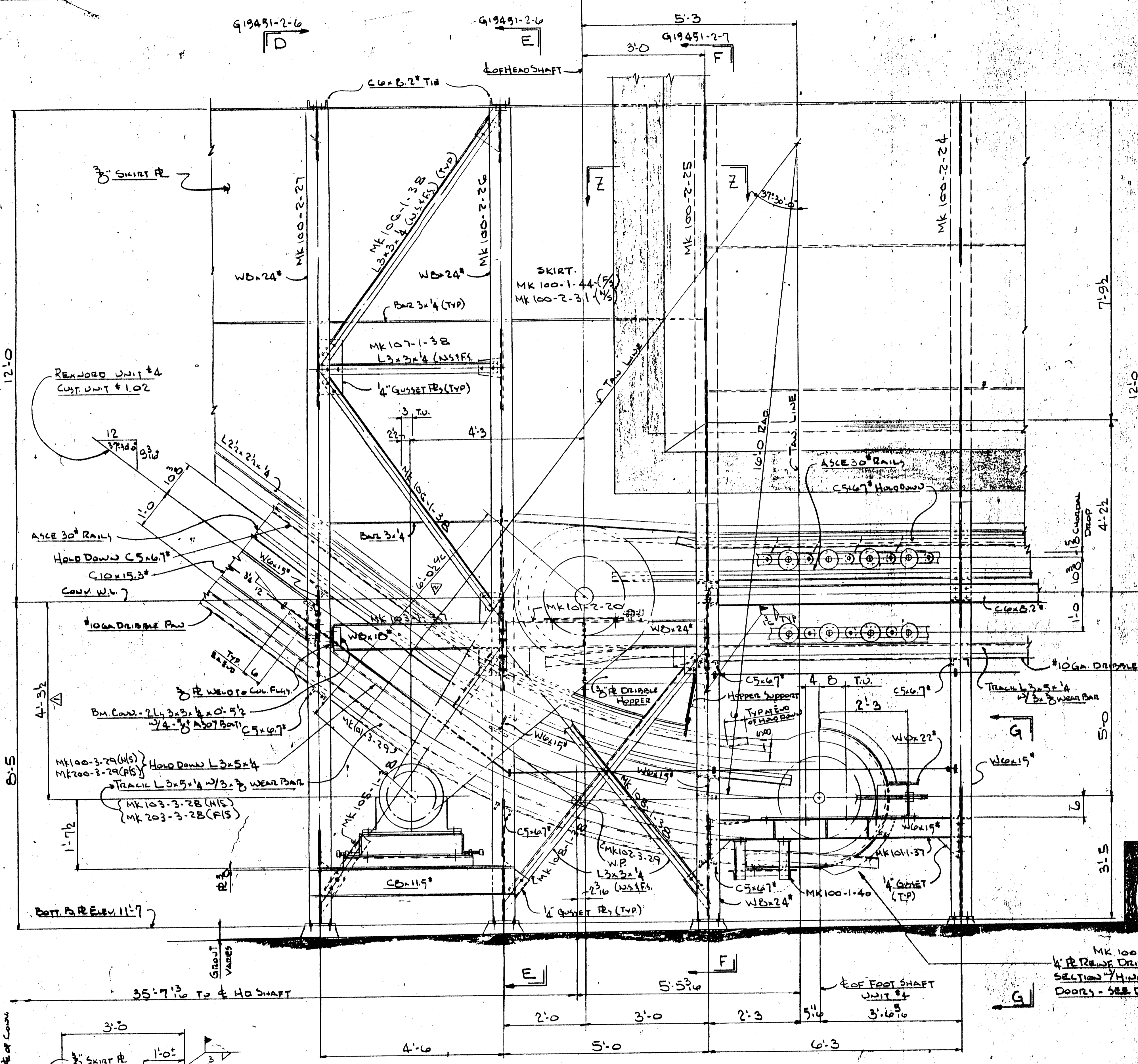
PART OR ORDER NO. G19451 DRAWING NO. G19451-2-4

DIV. NO. 35

REV. 1

CANADA COPY

LIST OF COMPONENTS						
REF. SYMBOL	QUANTITY	PART NUMBER	PART NAME OR MATERIAL SIZE AND DESCRIPTION	MATERIAL	LENGTH	UNIT
NOTE: REFERENCE SYMBOLS WHERE SHOWN ARE TO ASSIST IN LOCATING COMPONENTS IN DIFFERENT VIEWS OF THIS DRAWING ONLY. ALL LENGTHS ARE FINAL LENGTHS UNLESS SPECIFIED AS ROUGH ("RGM").						



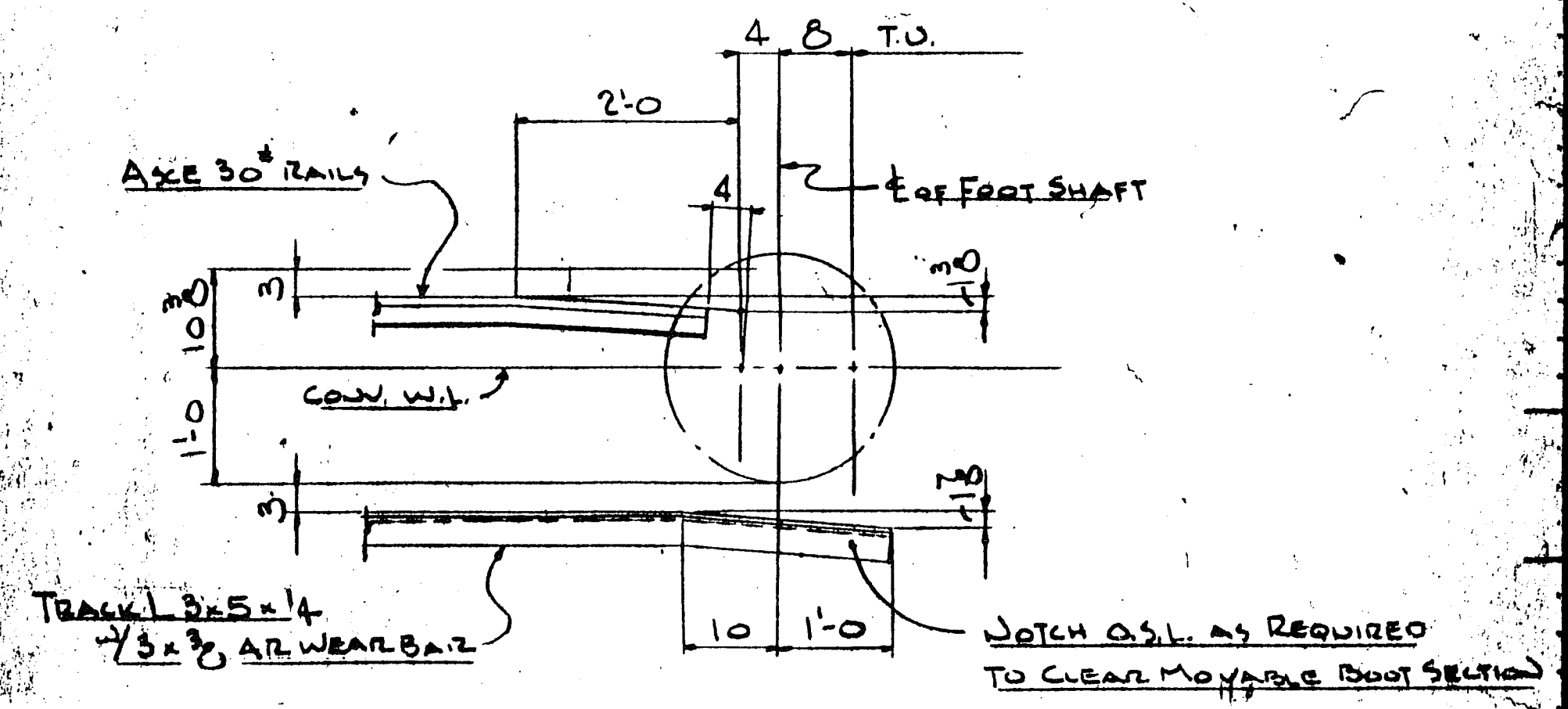
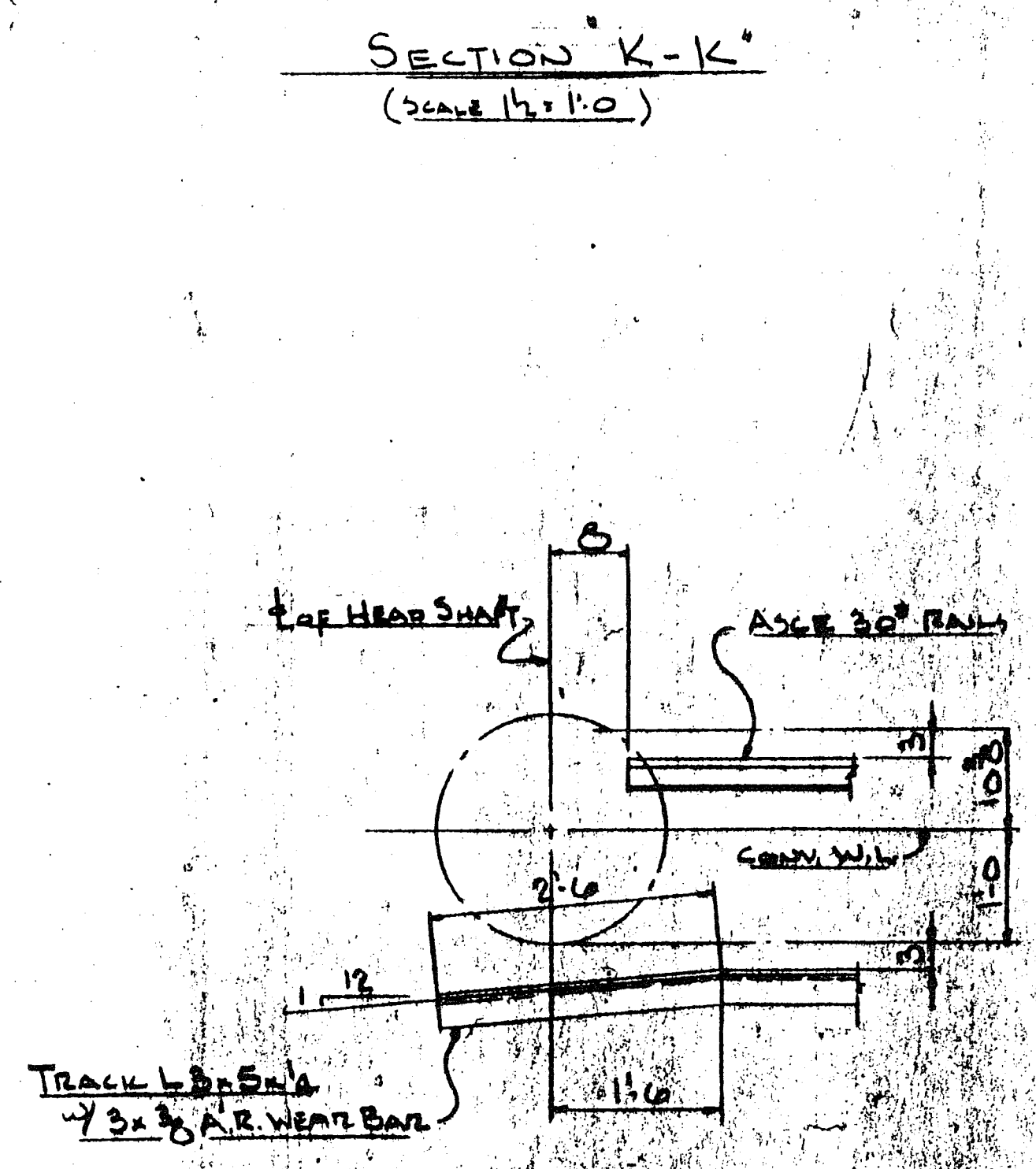
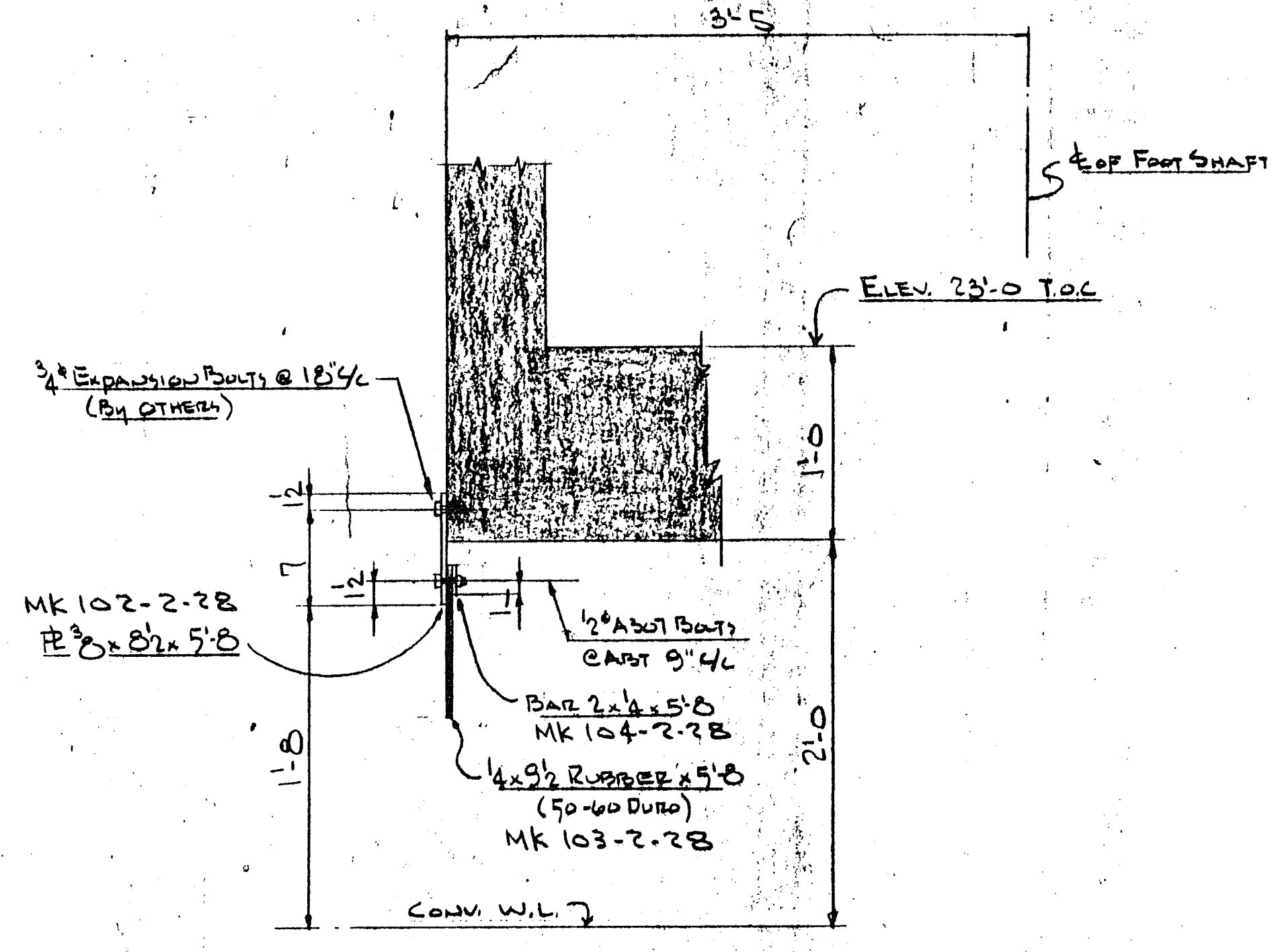
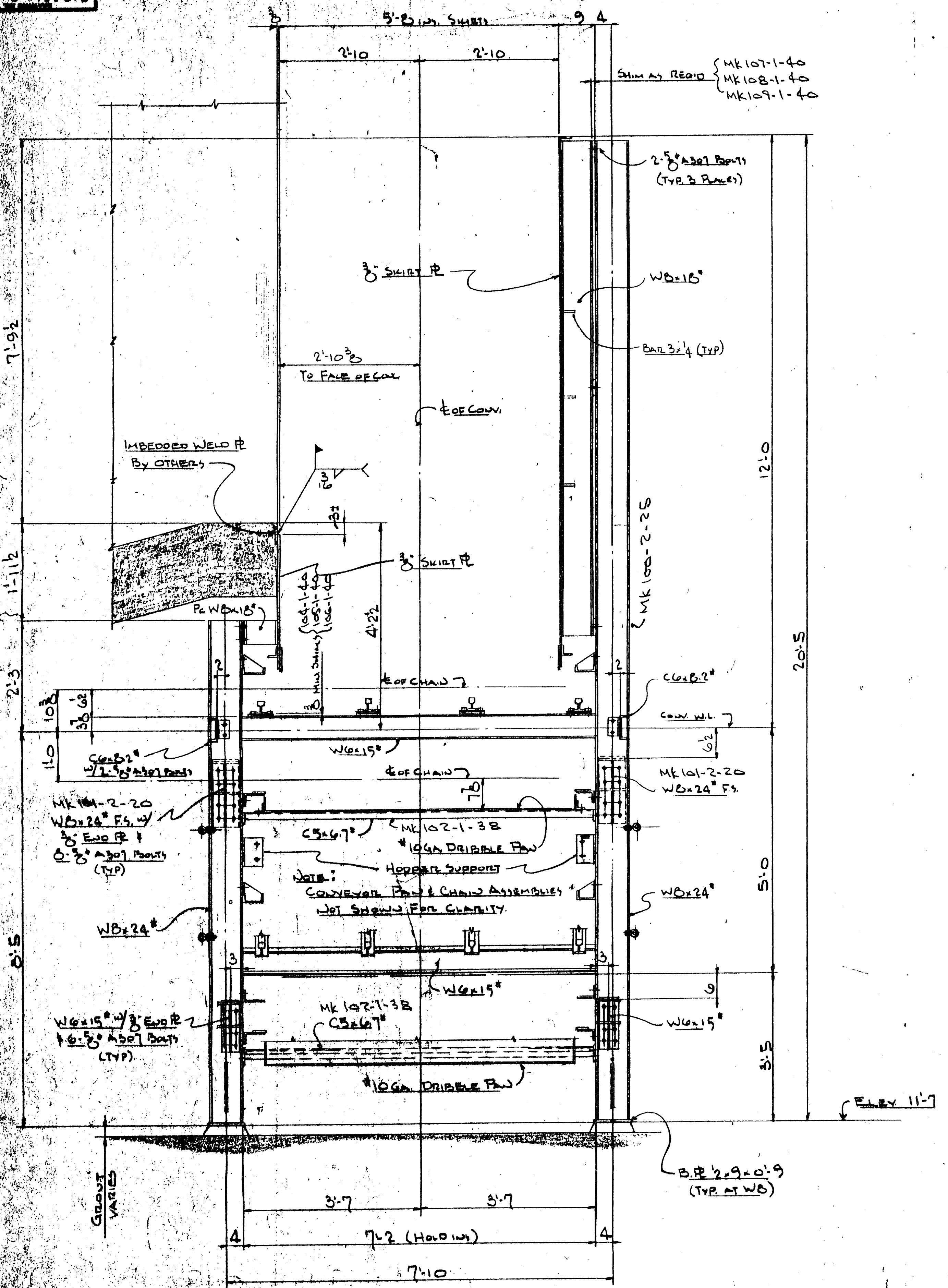
CERTIFICATION: DO NOT USE FOR CONSTRUCTION UNLESS CERTIFIED Charles P. Winkler 1-8-86	
CONFIDENTIAL - ALL RIGHTS RESERVED	
<b>Rexnord Inc.</b> Mechanical Power Division CONVEYING EQUIPMENT OPERATION MILWAUKEE, WISCONSIN 53201	
PART OR ORDER NO. G19451	DRAWING NO. G19451-2-5

DESIGNED BY J.D.M.	DATE 10-30-85	CHECKED BY N.C.L.	DATE 11-20-85	APPROVED BY C.P.W.	DATE 11-27-85
MATERIAL SPECIFICATION NO.		PROCESS SPECIFICATION NO.		DISTRIBUTION OF TRACINGS	
<p><b>CONTRACTOR NOTE:</b> Corrections of minor misfile and a reasonable amount of cutting and reaming are considered a part of erection. Any error which prevents assembly by moderate use of drift pins. Cutting and welding is to be reported and approval of correction or change is to be received in writing before proceeding.</p> <p><b>SAFETY CONSIDERATIONS:</b> Safety features included within the scope of equipment supply are shown on contract drawings. Complete conformance with all applicable safety codes is the responsibility of the owner.</p> <p>Codes which are commonly applicable to safety related considerations for this equipment include, but are not limited to, ASME B31.1, ASME B30.1, OSHA, and MSHA.</p>					



19451-2-7

LIST OF COMPONENTS				WEIGHT	QUANTITY
TITLE	UNIT	ITEM	REV.	PART OR ORDER NO.	LENGTH
NOTE: REFERENCE SYMBOLS, WHERE SHOWN, ARE TO ASSIST IN LOCATING COMPONENTS IN DIFFERENT VIEWS OF THIS DRAWING ONLY. ALL LENGTHS ARE FINAL LENGTHS UNLESS SPECIFIED AS ROUGH ("R").					
REF. SYMBOL	QUANTITY	PART NUMBER	PART NAME OR MATERIAL SIZE AND DESCRIPTION	MATERIAL SPEC.	LENGTH



SECTION 'F-F'

TYPICAL RAIL & TRACK DETAIL AT CONVEYOR HEAD END TYPICAL RAIL & TRACK DETAIL AT CONVEYOR FOOT END

WORK THIS DRAWING WITH DRAWING G19451-2-1 G19451-2-5

CUST. UNIT # 101

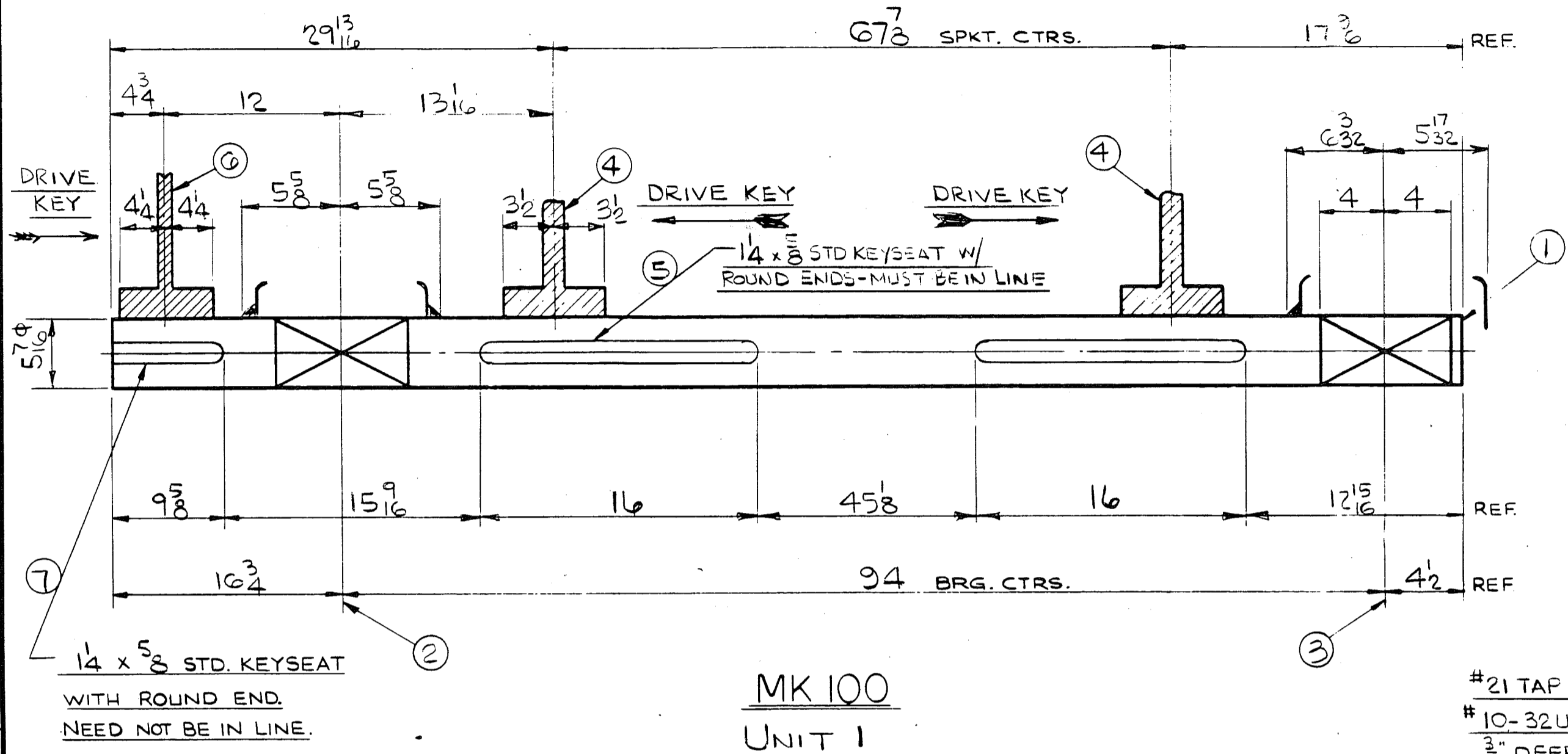
	NAME OF PROJECT MATERIAL SPECIFICATION NO. PROCESS SPECIFICATION NO. DISTRIBUTION OF TRACKS
--	--

**INSPECTOR NOTE**  
 Corrections of minor mistakes and a reasonable amount of cutting and re-cutting are considered a part of erection. Any error which prevents assembly or proper use of drift pins. Cutting and welding is to be reported and approval of correction or change is to be received in writing before proceeding.  
 Failure to comply will relieve Rexnord Inc. of all operational and proprietary responsibility.

**SAFETY CONSIDERATIONS**  
 Safety features included within the scope of equipment supplied are shown on location drawings. Complete performance with all applicable safety codes is the responsibility of the purchaser.  
 Codes which are particularly applicable to safety related considerations for this equipment installation are not limited to, ASME B31.1, ASME B31.3, OSHA, and MSHA.

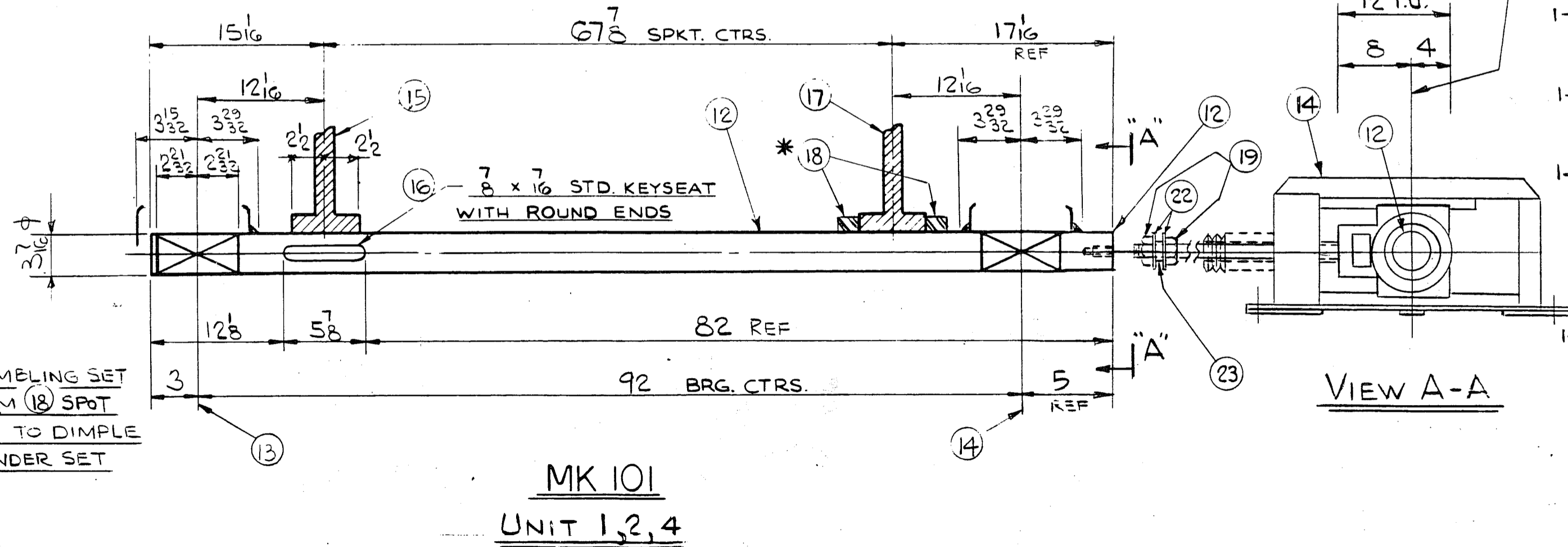
DESIGNED BY: J.M. CHECKED BY: N.C. APPROVED BY: O.P. DATE: 10-30-85 11-24-85 11-27-85	COMBUSTION ENGINEERING 234-B014-M-605 7722-A1 SECTION & DETAILS FOR 72" WIDE HORIZONTAL PIT CONVEYOR
--	---

CERTIFICATION: DO NOT USE FOR CONSTRUCTION UNLESS CERTIFIED Charles P. Winkler 1-8-86	CONFIDENTIAL - ALL RIGHTS RESERVED <b>Rexnord Inc.</b> Mechanical Power Division CONVEYING EQUIPMENT OPERATION MILWAUKEE, WISCONSIN 53201
PART OR ORDER NO. G19451	DRAWING NO. G19451-2-7



MK 100  
UNIT 1

#21 TAP DRILL 1" DEEP FOR  
#10-32 UNF-2B TAP WITH  
3/4" DEEP FULL THREADS  
FOR ITEMS 20 & 21



MK 101  
UNIT 1, 2, 4

LIST OF COMPONENTS				WEIGHT	DRAWING NO.
TITLE	UNIT	ITEM	REV.		
5/16" DIA. HEADSHAFT	1 & 2				G19451-1-10
3/16" DIA. FOOTSHAFT					G19451
NOTE: REFERENCE SYMBOLS, WHERE SHOWN, ARE TO ASSIST IN LOCATING COMPONENTS IN DIFFERENT VIEWS OF THIS DRAWING. ONLY. ALL LENGTHS ARE FINAL LENGTHS UNLESS SPECIFIED AS ROUGH ("RGH").					REFERENCE DRAWING NO. G19451-1-4
REF. SYMBOL	QUANTITY	PART NUMBER	PART NAME OR MATERIAL SIZE AND DESCRIPTION	MATERIAL SPEC. ENGR. STD. NO.	LENGTH FEET INCHES
MAT'L. REQ'D. FOR ONE MK100 1-REQ'D.					
	1		5/16 DIA. C.F.S. SHAFT	4-19	9 7/4
1-10	2	AMP-5507-F	5/16" DIA. PILLOW BLOCK - (FIXED)		
1-11	3	BMPS-5507-F	5/16" DIA. PILLOW BLOCK - (EXP.)		
1-1	4	1-PAIR	# R2614-M14-6T-24.00 P.D. FAB STL		
			GAPPED TOOTH SPKT W/HARDENED TEETH		
			HUB 8 DIA x 7 LG CENTRAL BORE 5/16		
			DIA. W/1/4 x 5/8 TAPER KEYWAY		
			(SPKTS TO BE MATCHED IN SETS OF TWO)		
5	2		1 1/4 x 1 1/4 x 8 1/4 LG. GIB HD TAPER KEY		
1-18	6	1	#240-2-C43H-41.099 P.D. STEEL		
			CUT TOOTH SPKT W/HARDENED		
			TEETH. HUB 10 DIA. x 8 1/2 LG.		
			TYPE 'C' CENTRAL.		
			BORE 5/16 DIA W/1/4 x 5/8 T.K.W.		
7	1		1 1/4 x 1 1/4 x 9 3/4 LG GIB HD TAPER KEY		
MAT'L. REQ'D. FOR ONE MK101 3-REQ'D.					
	12	1	3/16" C.F.S. SHAFT	4-19	8 4
1-16	13	1	BMHT-10-5307-12 - 3/16" DIA TAKE-UP ASSY COMPLETE		
			MODEL #XVK30789 WITH 12" TRAVEL, BELLEVILLE SPRINGS		
			AND TWO AUXILIARY CAP SEALS 1-OPEN & 1-CLOSED		
1-17	14	1	AMHT-10-5307-12 - 3/16" DIA. TAKE-UP ASSY COMPLETE		
			MODEL #XVJ30783 WITH 12" TRAVEL, BELLEVILLE SPRINGS,		
			TWO OPEN CAP SEALS & EXTRA CAP BASKET		
1-4	15	1	# R2614-M14-6T-24.00 P.D. FAB STL		
			GAPPED TOOTH SPKT W/HARDENED TEETH		
			HUB 5 1/4 DIA. x 5 LG CENTRAL BORE 3/16		
			DIA. W/8 x 7/16 STRKW & 2-SS 1-OVERKEY 10 9/16		
16	1		7 8 x 7 8 x 5 LG STRAIGHT KEY (4-21)		
17	1		# R2614-M14-6T-24.00 P.D. FAB STL		
			GAPPED TOOTH SPKT W/HARDENED TEETH		
			BR BUSHED HUB 5 1/4 DIA x 5 LG. B. 3/16 PLAIN		
18	2	135-20147-05	3/16 DIA FAB STL SET COLLAR		
19	4		1 3/4 - SUNC-2B HEX NUT		
20	1		#10-32 UNF-2A x 2 1/4 LG SLOTTED H.H. MACH. SCR		
21	1		1/4 DIA. LOCK WASHER		
22	4		1 3/4 DIA. CUT WASHER		
23	2		2 1/8 O.D. x 5/32 WALL x 1/2 LG. ROUND MECHANICAL TUBING		

E.C.N. OR DATE	CHANGE NO. (INCL.)	MICRO. FILMED

**ERECTOR NOTE:**  
CORRECTIONS OF MINOR MISFITS AND A REASONABLE AMOUNT OF CUTTING AND REAMING ARE CONSIDERED A PART OF ERECTION. ANY ERROR WHICH PREVENTS ASSEMBLY BY MODERATE USE OF DRIFT PINS, CUTTING AND WELDING IS TO BE REPORTED AND APPROVAL OF CORRECTION OR CHANGE IS TO BE RECEIVED IN WRITING BEFORE PROCEEDING. FAILURE TO COMPLY WILL RELIEVE REXNORD INC. OF ALL OPERATIONAL AND MONETARY RESPONSIBILITY.

PROCESS SPEC.	ENGR. STD. NO.
MAT'L SPEC.	ENGR. STD. NO.
DR'N BY	DATE DR'N
JK	1/24/86
CK'D BY	DATE CK'D
DA	2-25-86
IN CHARGE	APP'D

CUSTOMER			
COMBUSTION ENGINEERING			
INSTALLED AT			
ENGINEER			
SCALE:	ESTIMATE NO.	CUST. ORDER NO.	GEN. DWG. NO.
NONE	7722-A1	256-8014-MC403	G19451-1-4
PAINT SPECIFICATION: ALL STRUCTURAL ITEMS TO RECEIVE COATS			UNIT
			1,3,3
DIMENSIONS IN INCHES IF NOT SPECIFIED			
OSHA COMPLIANCE IS CERTIFIED TO THE EXTENT SET FORTH IN THE REXNORD WARRANTY INCLUDED IN THE CONDITIONS OF SALE FOR THIS EQUIPMENT.			

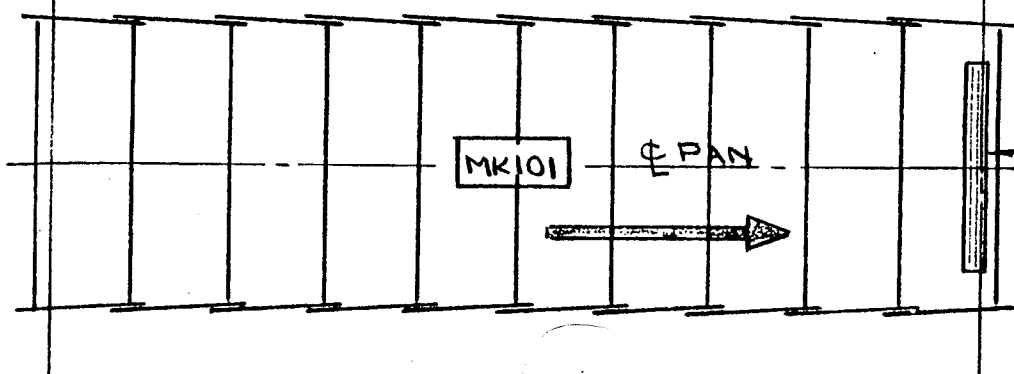
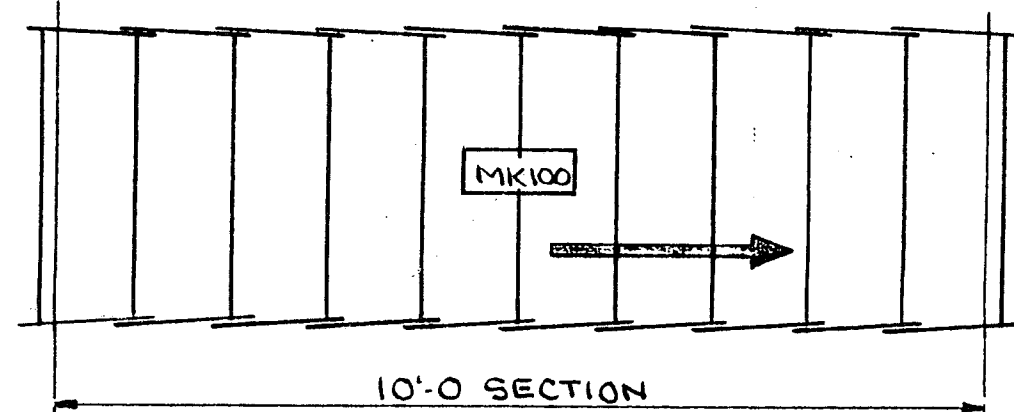
CERTIFICATION:	
DO NOT USE FOR CONSTRUCTION UNLESS CERTIFIED	
CERTIFIED BY	DATE
REXNORD INC.	
TITLE	
5/16" DIA. HEADSHAFT & 3/16" DIA. FOOTSHAFT	

CONFIDENTIAL -- ALL RIGHTS RESERVED	
<b>Rexnord Inc.</b>	
CONVEYING EQUIPMENT DIVISION MILWAUKEE, WISCONSIN 53201	
PART OR ORDER NO.	DRAWING NO.
G19451	G19451-1-10

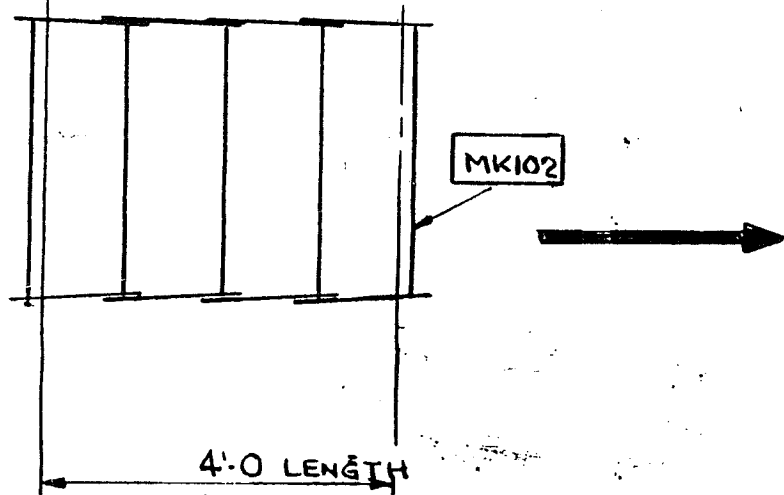


G19451-2-14  
DRAWING NO.

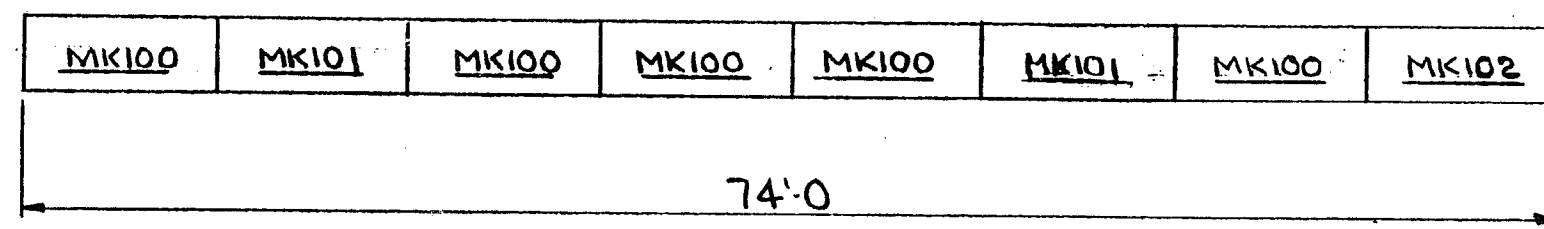
LIST OF COMPONENTS				WEIGHT		DRAWING NO.	
TITLE	UNIT	ITEM	REV.	G19451-2-14		PART OR ORDER NO.	
	2			G19451		REFERENCE DRAWING NO.	
NOTE: REFERENCE SYMBOLS, WHERE SHOWN, ARE TO ASSIST IN LOCATING COMPONENTS IN DIFFERENT VIEWS OF THIS DRAWING ONLY. ALL LENGTHS ARE FINAL LENGTHS UNLESS SPECIFIED AS ROUGH ("RGR").							
REF. SYMBOL	QUANTITY	PART NUMBER	PART NAME OR MATERIAL SIZE AND DESCRIPTION		MATERIAL SPEC. ENGR. STD. NO.	LENGTH FEET INCHES	



CLEAN-OUT PUSHER OR'D 1-49  
PART N° G19451-1-18-100



MK N°S USED ONLY FOR  
SIMPLE FIELD IDENTIFICATION



74 LINEAL FEET OF CONVEYOR

FIELD ASSEMBLY KEY

IT IS ESSENTIAL FOR MAXIMUM PUSHER EFFICIENCY THAT EACH CHAIN AND PAN ASSEMBLY BE INSTALLED IN THE ORDER AS SHOWN ABOVE.

**ERECTOR NOTE:**

CORRECTIONS OF MINOR MISFITS AND A REASONABLE AMOUNT OF CUTTING AND REAMING ARE CONSIDERED A PART OF ERECTION. ANY ERROR WHICH PREVENTS ASSEMBLY BY MODERATE USE OF DRIFT PINS, CUTTING AND WELDING IS TO BE REPORTED AND APPROVAL OF CORRECTION OR CHANGE IS TO BE RECEIVED IN WRITING BEFORE PROCEEDING. FAILURE TO COMPLY WILL RELIEVE REXNORD INC. OF ALL OPERATIONAL AND MONETARY RESPONSIBILITY.

PROCESS SPEC.	ENGR. STD. NO.	CUSTOMER <b>COMBUSTION ENGINEERING</b>			
MAT'L SPEC.	ENGR. STD. NO.	INSTALLED AT			
DR'N BY <b>DAJ</b>	DATE DR'N <b>4-25-86</b>	ENGINEER			
CK'D BY	DATE CK'D	SCALE: <b>NONE</b>	ESTIMATE NO. <b>7722-A1</b>	CUST. ORDER NO. <b>256-8014-MC403</b>	GEN. DWG. NO. <b>G19451-2-1</b>
IN CHARGE	APP'D	DIMENSIONS IN INCHES IF NOT SPECIFIED		PAINT SPECIFICATION: ALL STRUCTURAL ITEMS TO RECEIVE COATS	UNIT <b>2</b>
OSHA COMPLIANCE IS CERTIFIED TO THE EXTENT SET FORTH IN THE REXNORD WARRANTY INCLUDED IN THE CONDITIONS OF SALE FOR THIS EQUIPMENT.					

CERTIFICATION: DO NOT USE FOR CONSTRUCTION UNLESS CERTIFIED	
CERTIFIED BY	DATE
REXNORD INC.	
TITLE <b>CHAIN AND PAN ASSEMBLY WITH CLEAN-OUT PUSHER</b>	UNIT <b>2</b>

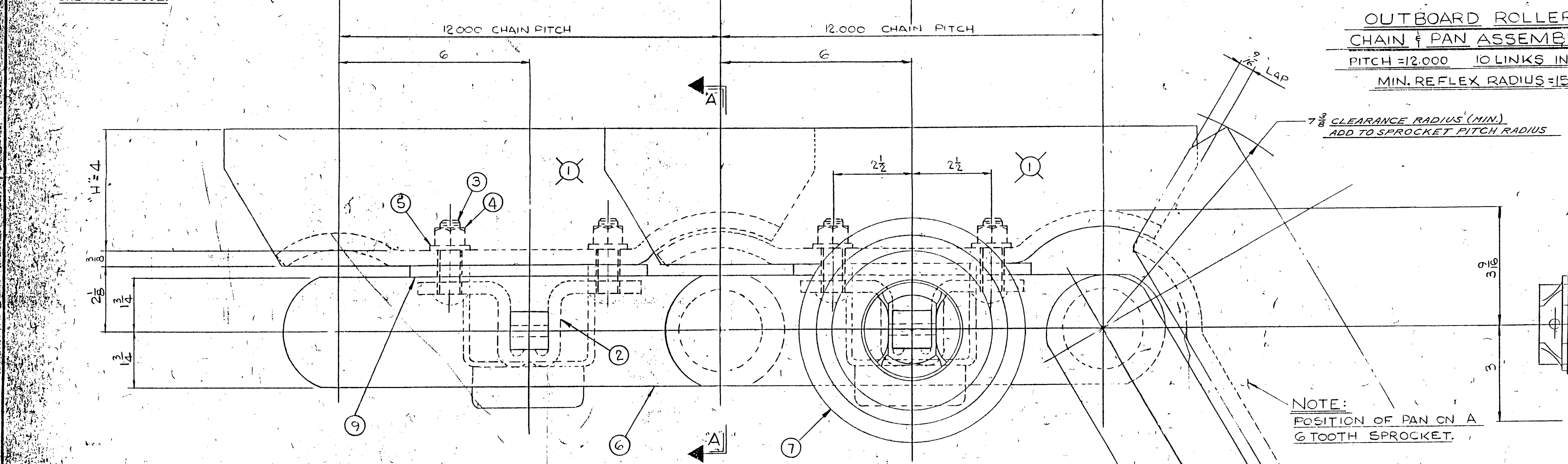
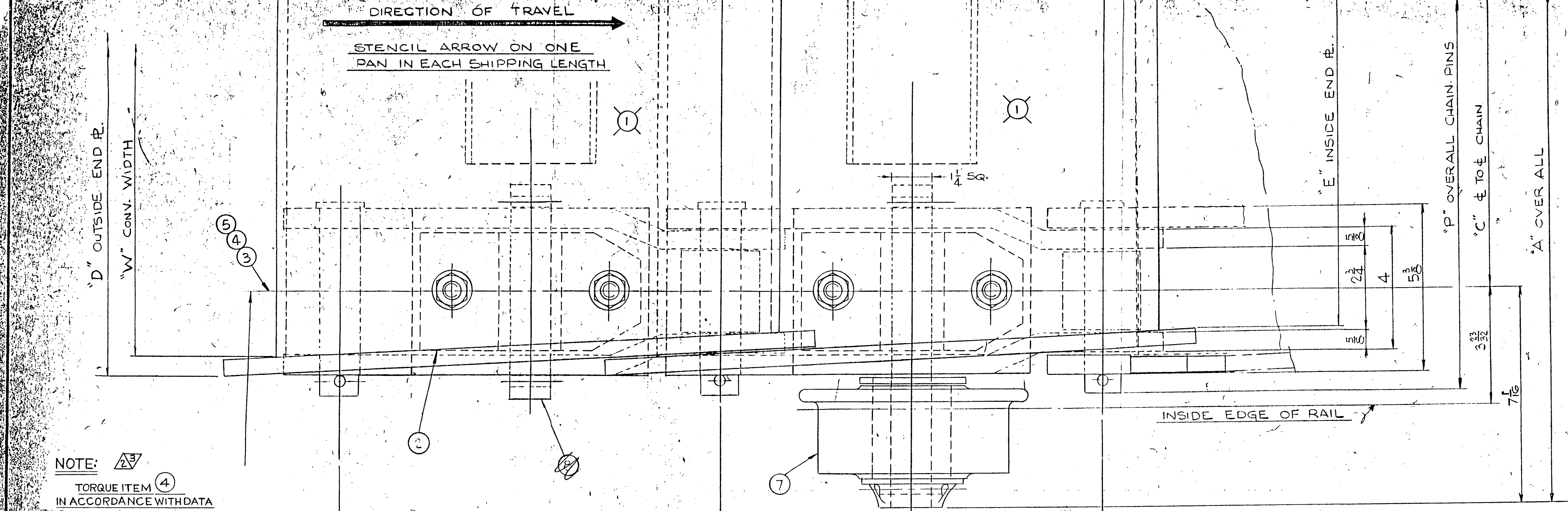
CONFIDENTIAL -- ALL RIGHTS RESERVED	
<b>Rexnord Inc.</b>	
CONVEYING EQUIPMENT OPERATION MILWAUKEE, WISCONSIN 53201	
PART OR ORDER NO. <b>G19451</b>	DRAWING NO. <b>G19451-2-14</b>

BRUNING 40-107 51744

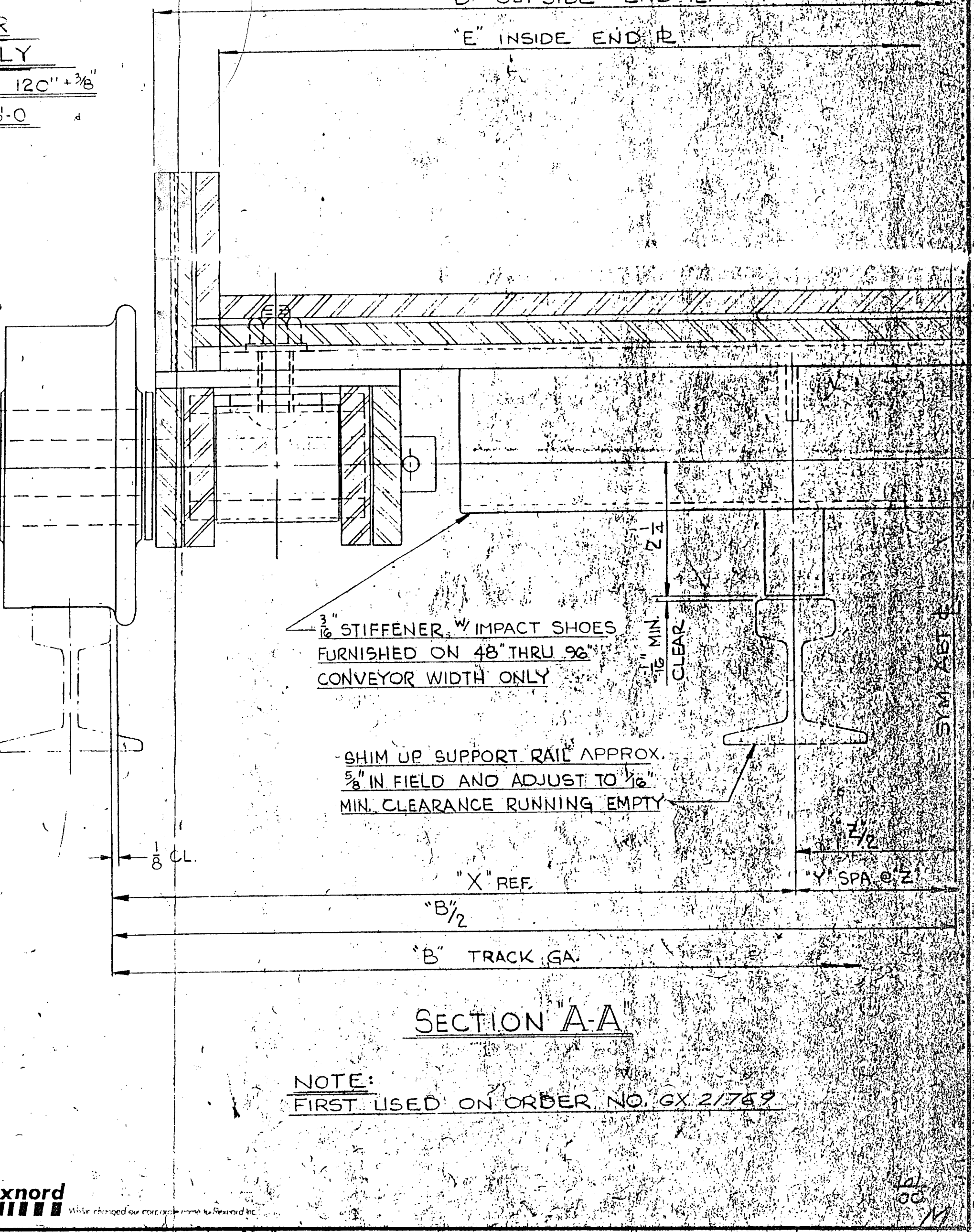
LOCATION OF CHANGES

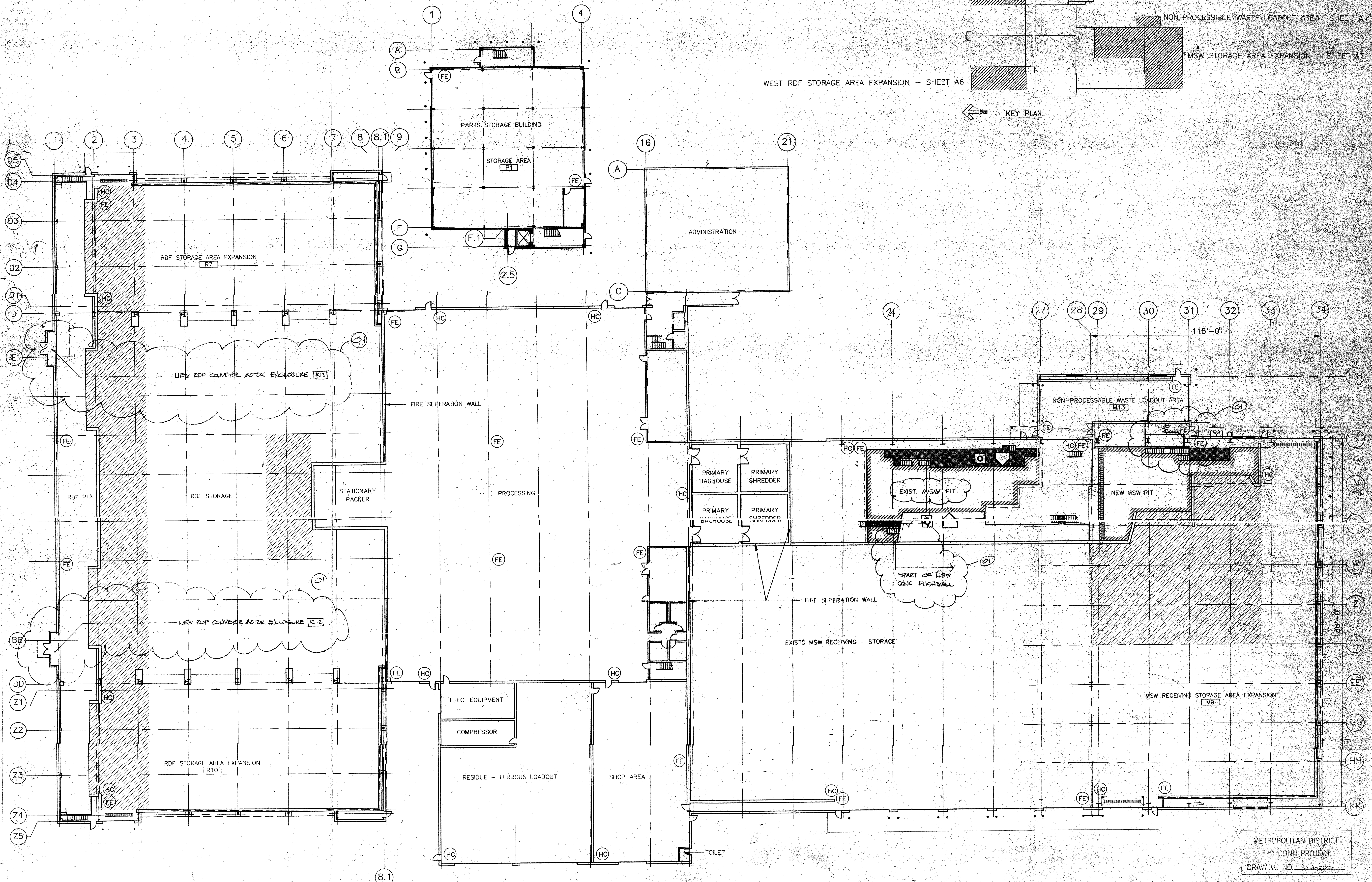
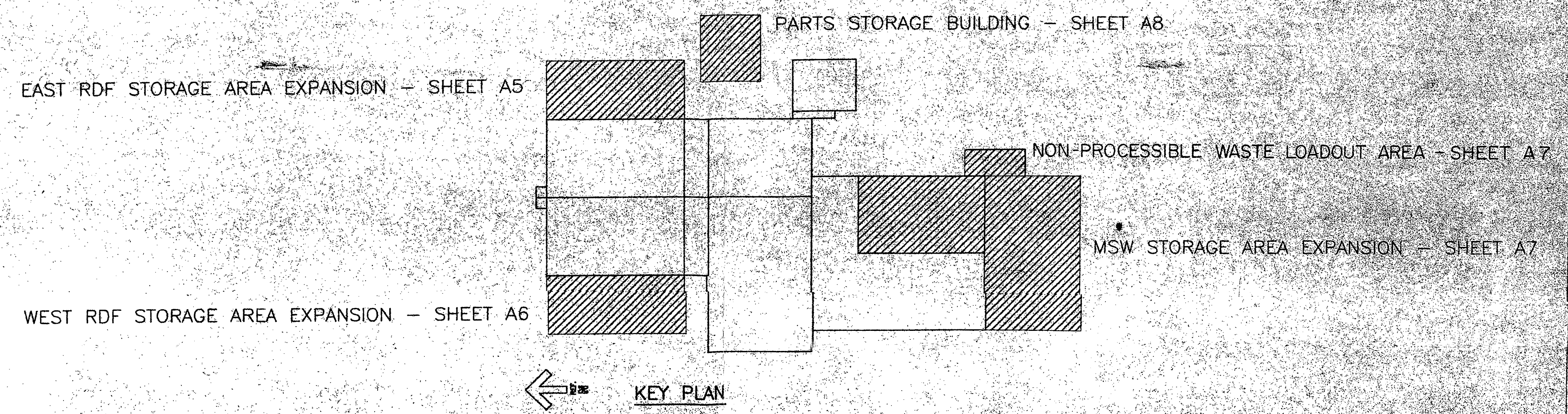
MASTER

LIST OF COMPONENTS			
QTY	SYMBOL	PART NUMBER	PART NAME OR DESCRIPTION
1		635-60164 (ASSEMBLY)	3/8" THICK PAN ASSY W/6 PUSHER
2	2	135-00284-01	TRI-LOK SADDLE
3	4	335-00073-08	3-10UNC-2A X 2 LG CARRIAGE BOLT GRADE 5
4	4	335-00074-03	3-10UNC-2B HEX LOCK NUT DEFORMED HEAD
5	4	335-00075-03	3-10 D X 1.500 X .122/177 THICK HEADENED WASHER
6	2	C2614-M14	CHAIN LINKS EQUALLY MATCHED RIGHT AND LEFT HAND STRANDED
7	2	735-00007-80	3" DIA STYLE 2 ROLLER SUBSHAFT ASSY
8		735-0-80	ROLLER ASSEMBLY
9	2	135-00283-01	3/8" SPACER



CONV. WIDTH "W"	ASSY. PART NO. 635-60090	ENGINEERING REF. ONLY - PART NO. INDEX																DIMENSIONS			"E" DIMENSIONS			"D" DIMENSIONS									
		PAN PART NO. W/O PUSHER								PAN PART NO. W/ PUSHER								CONV. WIDTH	A	B	C	P	X	Y	Z	END PLATE HEIGHT "H"			END PLATE HEIGHT "H"				
		4	6	8	10	12	14	16	18	4	6	8	10	12	14	16	18									4"	6"	8"	10"	4"	6"	8"	10"
30	80	80	80	80	80	80	80	80	80	80	80	80	80	80	80	80	80	30	3'-4"	2'-9 1/8"	2'-1 3/8"	2'-8 1/8"				2'-4 1/8"				2'-6 1/8"			
36	81	81	81	81	81	81	81	81	81	81	81	81	81	81	81	81	81	36	3'-10"	3'-3 1/8"	2'-7 3/8"	3'-2 1/8"				2'-10"				3'-0 1/8"			
42	82	82	82	82	82	82	82	82	82	82	82	82	82	82	82	82	82	42	4'-4"	3'-9 1/8"	3'-1 1/8"	3'-8 1/8"				3'-4"				3'-6 1/8"			
48	83	83	83	83	83	83	83	83	83	83	83	83	83	83	83	83	83	48	4'-10"	4'-3 1/8"	3'-7 3/8"	4'-2 1/8"	2'-1 3/8"	0	0	3'-10"				4'-0 1/8"			
54	84	84	84	84	84	84	84	84	84	84	84	84	84	84	84	84	84	54	5'-4"	4'-9 1/8"	4'-1 1/8"	4'-8 1/8"	1'-6 3/8"	1	1-7 5/8"	4'-4"				4'-6 1/8"			
60	85	85	85	85	85	85	85	85	85	85	85	85	85	85	85	85	85	60	5'-10"	5'-3 1/8"	4'-7 3/8"	5'-2 1/8"	1'-8 3/8"	1	1-9 1/8"	4'-10"				5'-0 1/8"			
66	86	86	86	86	86	86	86	86	86	86	86	86	86	86	86	86	86	66	6'-4"	5'-9 1/8"	5'-1 1/8"	5'-8 1/8"	1'-10 3/8"	1	1-11 1/8"	5'-4"				5'-6 1/8"			
72	87	87	87	87	87	87	87	87	87	87	87	87	87	87	87	87	87	72	6'-10"	6'-3 1/8"	5'-7 3/8"	6'-2 1/8"	2'-0 3/8"	1	2'-1 1/8"	5'-10"				6'-0 1/8"			
78	88	88	88	88	88	88	88	88	88	88	88	88	88	88	88	88	88	78	7'-4"	6'-9 1/8"	6'-1 1/8"	6'-8 1/8"	2'-2 3/8"	1	2'-3 1/8"	6'-4"				6'-6 1/8"			
84	89	89	89	89	89	89	89	89	89	89	89	89	89	89	89	89	89	84	7'-10"	7'-3 1/8"	6'-7 3/8"	7'-2 1/8"	2'-4 3/8"	1	2'-5 1/8"	6'-10"				7'-0 1/8"			
90	90	90	90	90	90	90	90	90	90	90	90	90	90	90	90	90	90	90	8'-4"	7'-9 1/8"	7'-1 1/8"	7'-8 1/8"	2'-6 3/8"	1	2'-7 1/8"	7'-4"				7'-6 1/8"			
96	91	91	91	91	91	91	91	91	91	91	91	91	91	91	91	91	91	96	8'-10"	8'-3 1/8"	7'-7 3/8"	8'-2 1/8"	2'-8 3/8"	1	2'-9 1/8"	7'-10"				8'-0 1/8"			





1 WASTE PROCESSING BUILDING FLOOR PLAN  
A3 1/16" = 1'-0"

METROPOLITAN DISTRICT  
F15 CONN PROJECT  
DRAWING NO. A312-0002

	<p>Architects/Engineers/Planners 225 Fitchburg Boulevard Fitchburg, Massachusetts 01525</p>	JMP 12/21/90 Drawn By Date	<p>ABB RESOURCE RECOVERY SYSTEMS</p>	
		MF 12/21/90 Checked By Date		<p>This drawing is the property of ABB Resource Recovery Systems, a Division of Combustion Engineering Incorporated, Windsor, Connecticut, 06095, and is not to be reproduced or used to furnish any information for making of drawings or apparatus except where provided for by agreement with said company.</p>
		MK 12/21/90 Approved By Date		
				DWG. NO. MGI 13098 -A3 REV. "01"

