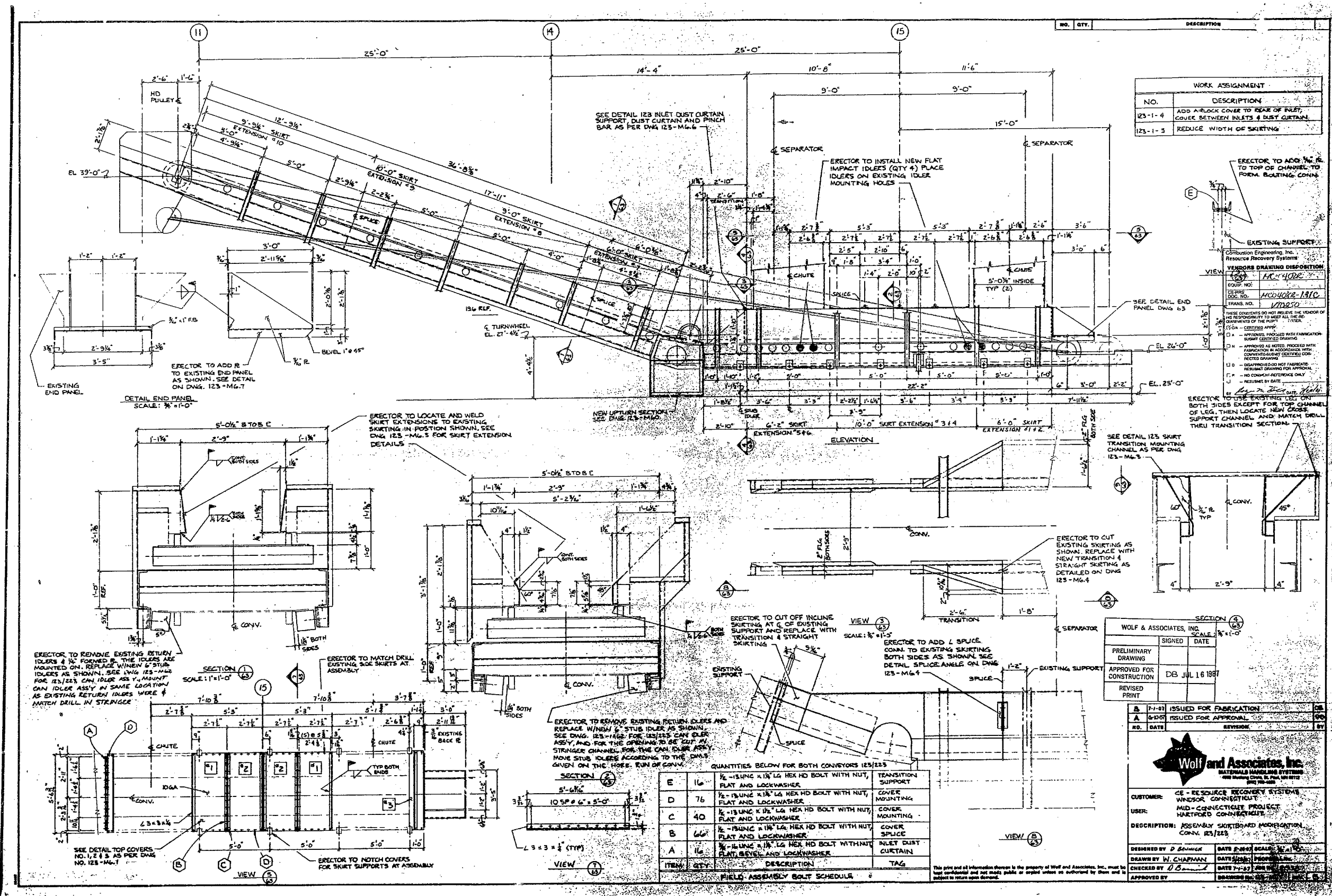


# Drawing #1



WORK ASSIGNMENT	
NO.	DESCRIPTION
123-1-4	ADD A-BLOCK COVER TO REAR OF INLET COVER BETWEEN INLETS & DUST CURTAIN
123-1-5	REDUCE WIDTH OF SKIRTING

ERECTOR TO ADD 1/2" R TO TOP OF CHANNEL TO FORM BOATING CONING

ERECTOR TO USE EXISTING LEG ON BOTH SIDES EXCEPT FOR TOP CHANNEL SUPPORT CHANNEL AND MATCH DRILL THRU TRANSITION SECTION

ERECTOR TO CUT EXISTING SKIRTING AS SHOWN. REPLACE WITH NEW TRANSITION & STRAIGHT SKIRTING AS DETAILED ON DWG 123-MG.4

ERECTOR TO CUT OFF INCLINE SKIRTING AT E OF EXISTING SUPPORT AND REPLACE WITH TRANSITION & STRAIGHT SKIRTING

ERECTOR TO ADD L SPLICE CONN. TO EXISTING SKIRTING BOTH SIDES AS SHOWN. SEE DETAIL SPLICE ANGLE ON DWG 123-MG.4

ERECTOR TO REMOVE EXISTING RETURN IDLERS & 1/2" FORMED IF THE IDLERS ARE MOUNTED ON. REPLACE WITHIN 6" STUD IDLER AS SHOWN. SEE DWG 123-MG.2 FOR 123/223 CAN IDLER ASSEMBLY. MOUNT CAN IDLER ASSEMBLY IN SAME LOCATION AS EXISTING RETURN IDLERS WERE & MATCH DRILL IN STRINGER

ERECTOR TO MATCH DRILL EXISTING SIDE SKIRTS AT ASSEMBLY

ERECTOR TO NOTCH COVERS FOR SKIRT SUPPORTS AT ASSEMBLY

WOLF & ASSOCIATES, INC.		
PRELIMINARY DRAWING	SIGNED	DATE
APPROVED FOR CONSTRUCTION	DES	JUL 16 1997
REVISED PRINT		

ITEM	QTY	DESCRIPTION	TAG
E	16	1/2" - 13 UNC X 1 1/2" LG HEX HD BOLT WITH NUT, PLAT AND LOCKWASHER	TRANSITION SUPPORT
D	76	1/2" - 13 UNC X 1 1/2" LG HEX HD BOLT WITH NUT, PLAT AND LOCKWASHER	COVER MOUNTING
C	40	1/2" - 13 UNC X 1 1/2" LG HEX HD BOLT WITH NUT, PLAT AND LOCKWASHER	COVER MOUNTING
B	66	1/2" - 13 UNC X 1 1/2" LG HEX HD BOLT WITH NUT, PLAT AND LOCKWASHER	COVER SPLICE
A	16	1/2" - 13 UNC X 1 1/2" LG HEX HD BOLT WITH NUT, PLAT, BEVEL AND LOCKWASHER	INLET DUST CURTAIN



CUSTOMER: GE - RESOURCE RECOVERY SYSTEMS  
 USER: WINDSOR CONNECTICUT  
 MID-CONNECTICUT PROJECT  
 HARTFORD CONNECTICUT

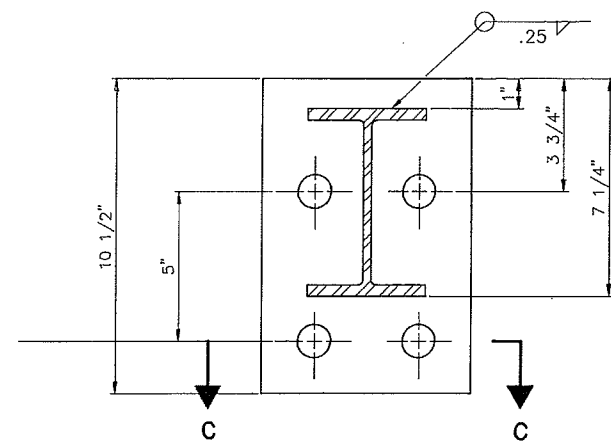
DESCRIPTION: ASSEMBLY SKIRTING AND MODIFICATION CONV. 123/223

DESIGNED BY: D. BRINCKER DATE: 6-24-97 SCALE: 1/4" = 1'-0"  
 DRAWN BY: W. CHAPMAN DATE: 6-24-97  
 CHECKED BY: D. BRINCKER DATE: 7-1-97  
 APPROVED BY: DATE: 7-1-97

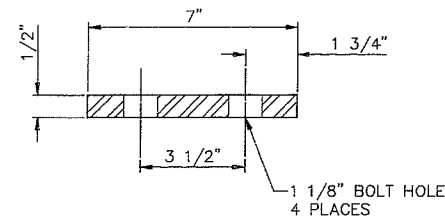
METROPOLITAN DISTRICT  
 MID CONN PROJECT

123/223

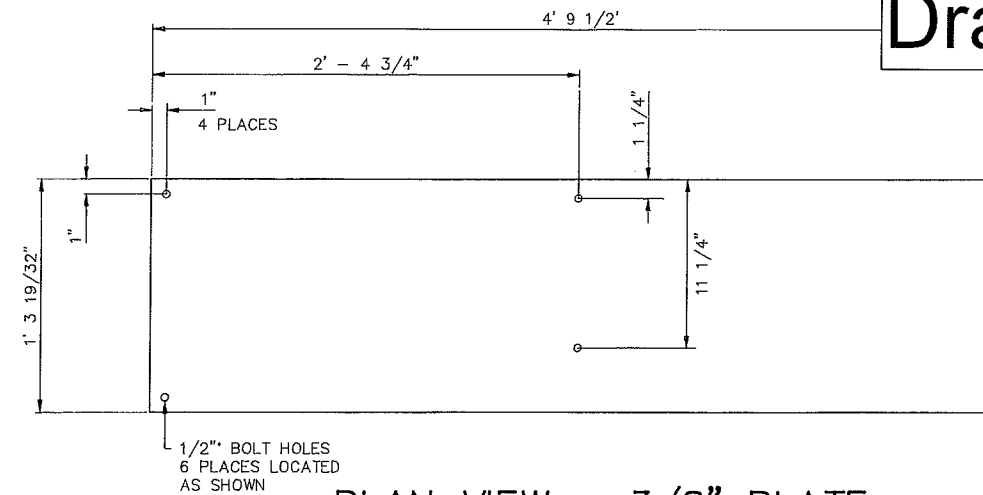
# Drawing #2



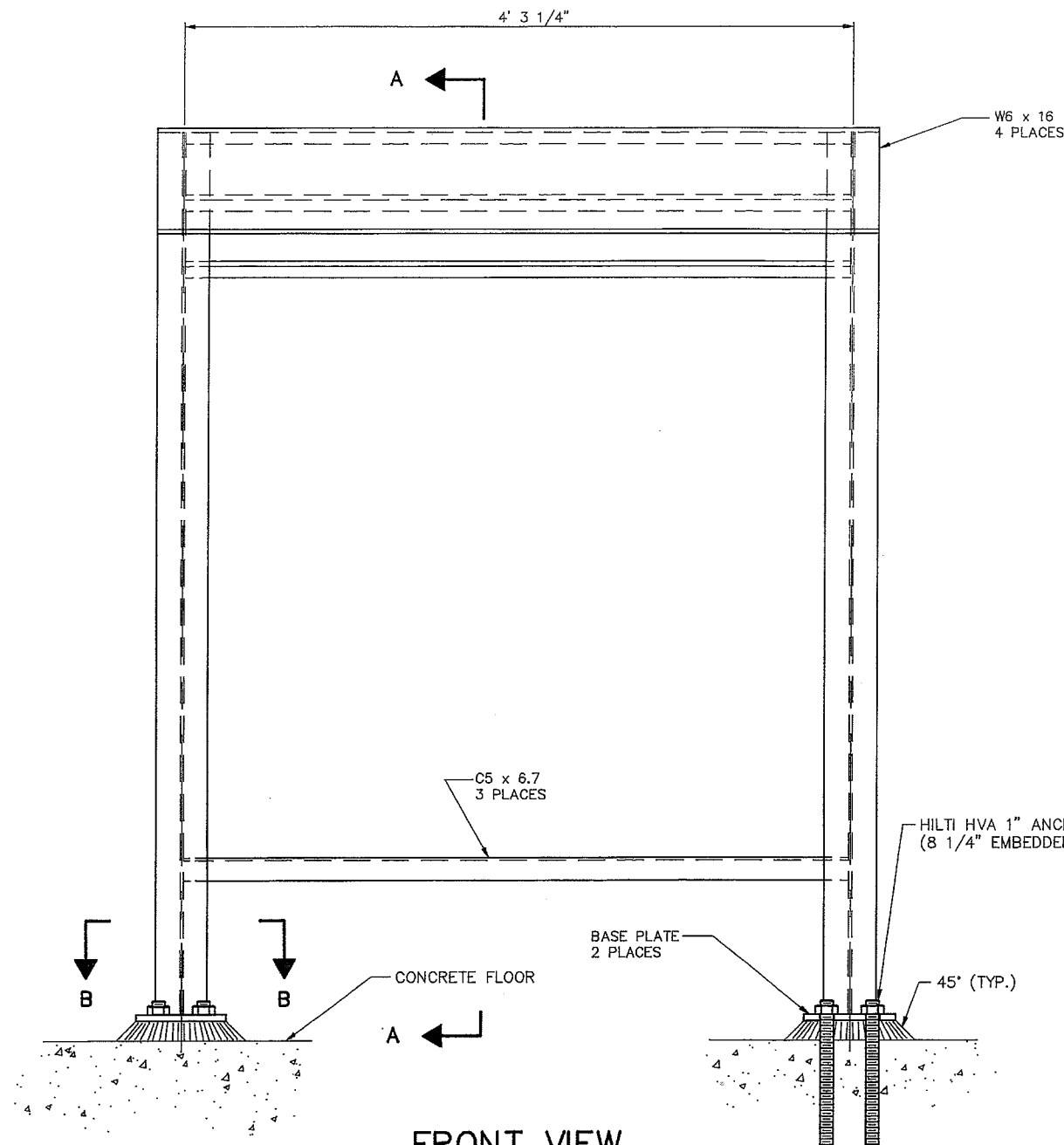
**SECTION B-B**  
SCALE: 3" = 1' - 0"



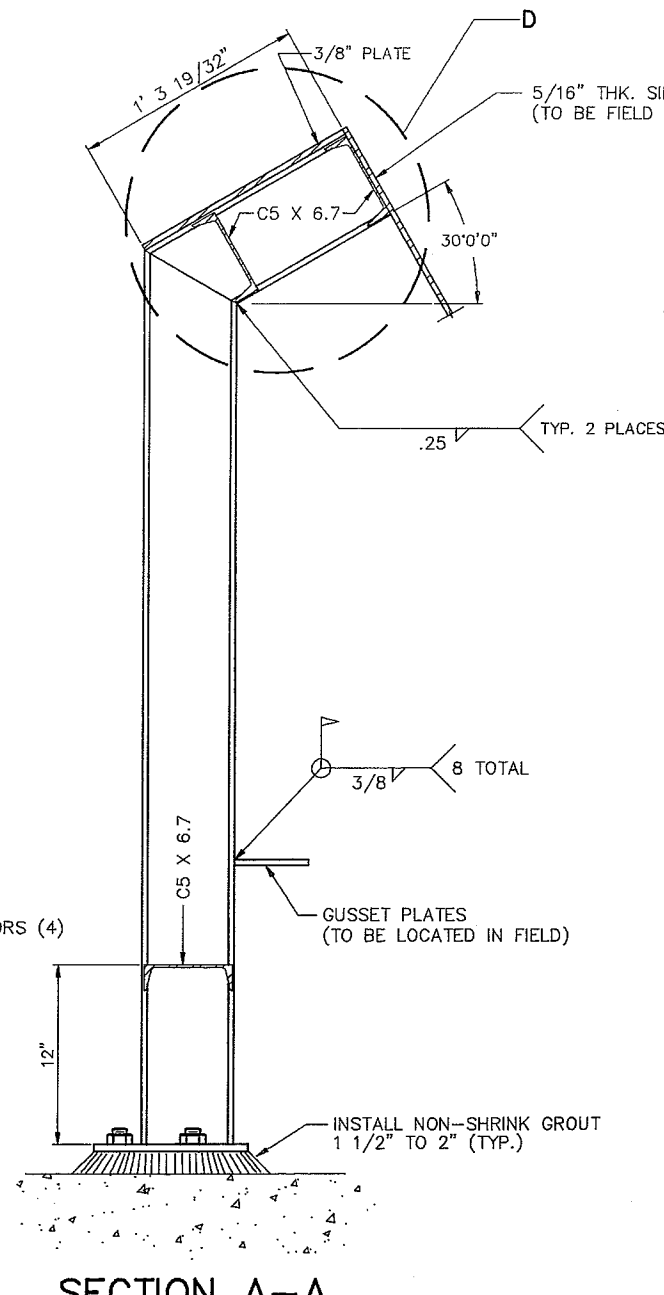
**SECTION C-C**  
SCALE: 3" = 1' - 0"



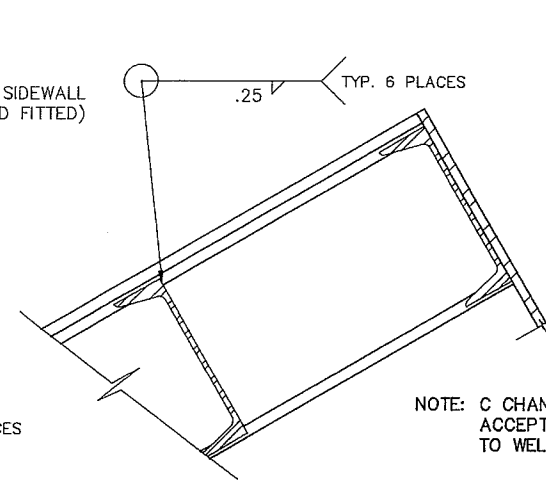
**PLAN VIEW - 3/8" PLATE**  
SCALE: 1 1/2" = 1' - 0"



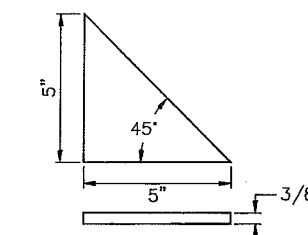
**FRONT VIEW**  
SCALE: 1 1/2" = 1' - 0"



**SECTION A-A**  
SCALE: 1 1/2" = 1' - 0"



**VIEW D**  
SCALE: 3" = 1' - 0"



**GUSSET PLATE**  
SCALE: 3" = 1' - 0"

NOTE: C CHANNEL TO BE CUT TO ACCEPT W CHANNEL PRIOR TO WELDING IN PLACE.

THE METROPOLITAN DISTRICT MID-CONNECTICUT PROJECT HARTFORD, CONNECTICUT		
CONNECTICUT RESOURCE RECOVERY AUTHORITY		
<b>GUARD FOR 123 HOPPER</b>		
SCALE AS INDICATED		
DRAWN T.J.S. ENGINEER M.D.Z. SUBMITTED <i>Michael Z...</i>	DATE SEPT. 9, 1991 SERIAL NO.	