



MAXIM ROAD Hartford, Connecticut

Railroad Grade Crossing Warning Devices (“Signals”) As-In-Service Plans

US DOT Crossing Inventory #860163G

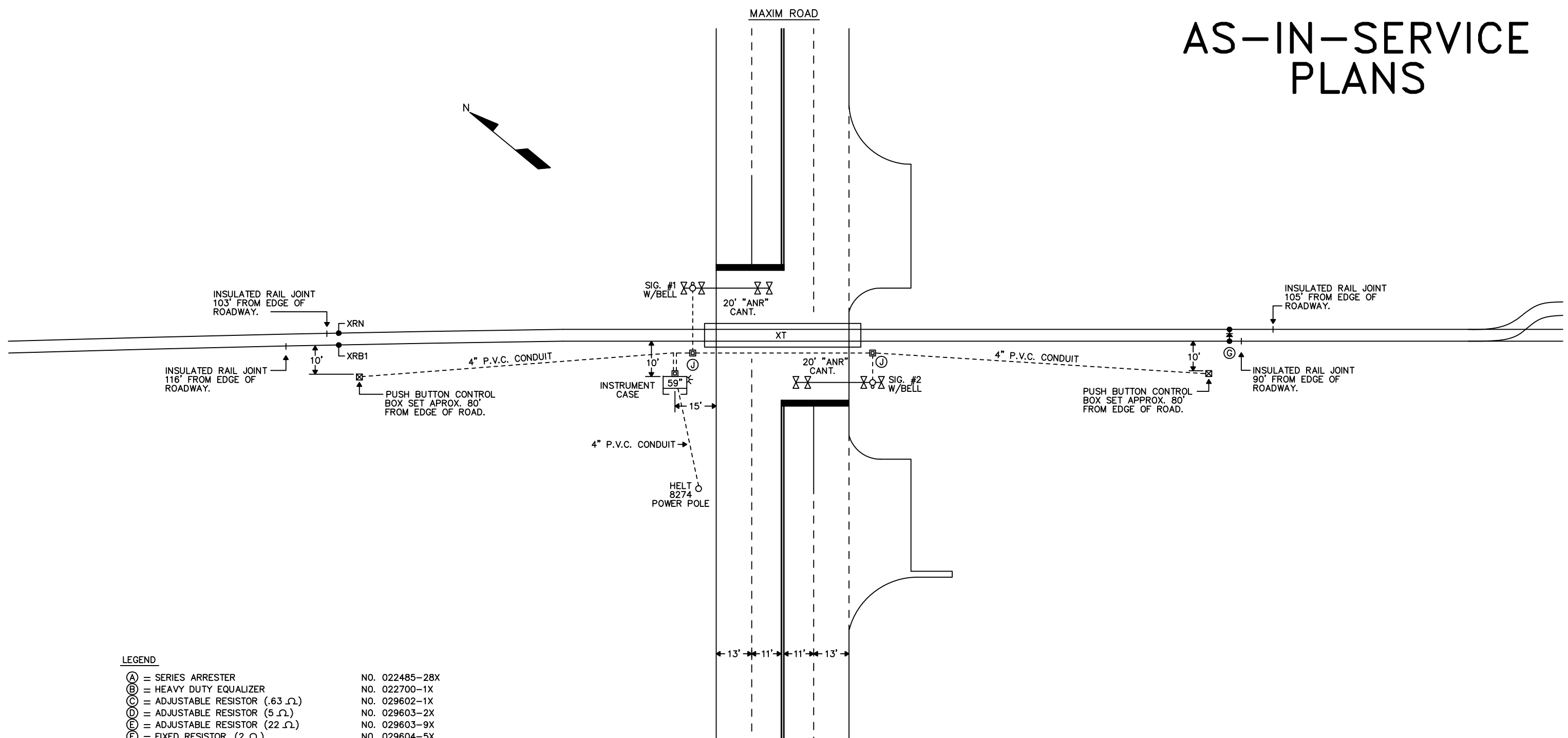
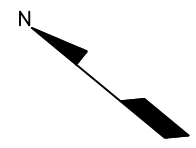
**As-In-Service - Field Check June 2009
Sheets 1-5**

List of Drawings (Not to Scale)

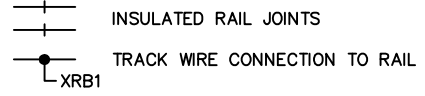
Cover Sheet
Sheet 1 of 5 – Location Plan
Sheet 2 of 5 – Cable Plan
Sheet 3 of 5 – Control Circuits
Sheet 4 of 5 – Power and Lighting Circuits
Sheet 5 of 5 – Case Layout

URS

AS-IN-SERVICE PLANS



- LEGEND**
- (A) = SERIES ARRESTER NO. 022485-28X
 - (B) = HEAVY DUTY EQUALIZER NO. 022700-1X
 - (C) = ADJUSTABLE RESISTOR (.63 Ω) NO. 029602-1X
 - (D) = ADJUSTABLE RESISTOR (5 Ω) NO. 029603-2X
 - (E) = ADJUSTABLE RESISTOR (22 Ω) NO. 029603-9X
 - (F) = FIXED RESISTOR (2 Ω) NO. 029604-5X
 - (G) = TRACK CIRCUIT RECTIFIER TCR-6 NO. 010130-5X
 - (H) = HEAVY DUTY TRACK ARRESTER NO. 022615-1X
 - (J) = CONCRETE HANDHOLE



NOTE: LOCATE SIGNALS PER M.U.T.C.D. AS MINIMUM.

LOCATION PLAN
NOT TO SCALE
CIVIL INFO. TYPICAL

USDOT CROSSING INVENTORY #860163G


REVISIONS			
NO.	DATE	NO.	DATE
NO. 1	DATE 6/22/2009		
AS-IN-SERVICE FIELD CHECK			
DRAF.	CKD.	DRAF. S.P.R.	CKD. A.P.G.
JOB NO.		URS JOB NO. 36938181	

URS
URS CORPORATION AES
500 ENTERPRISE DRIVE
ROCKY HILL, CT 06067
1-(860)-529-8882

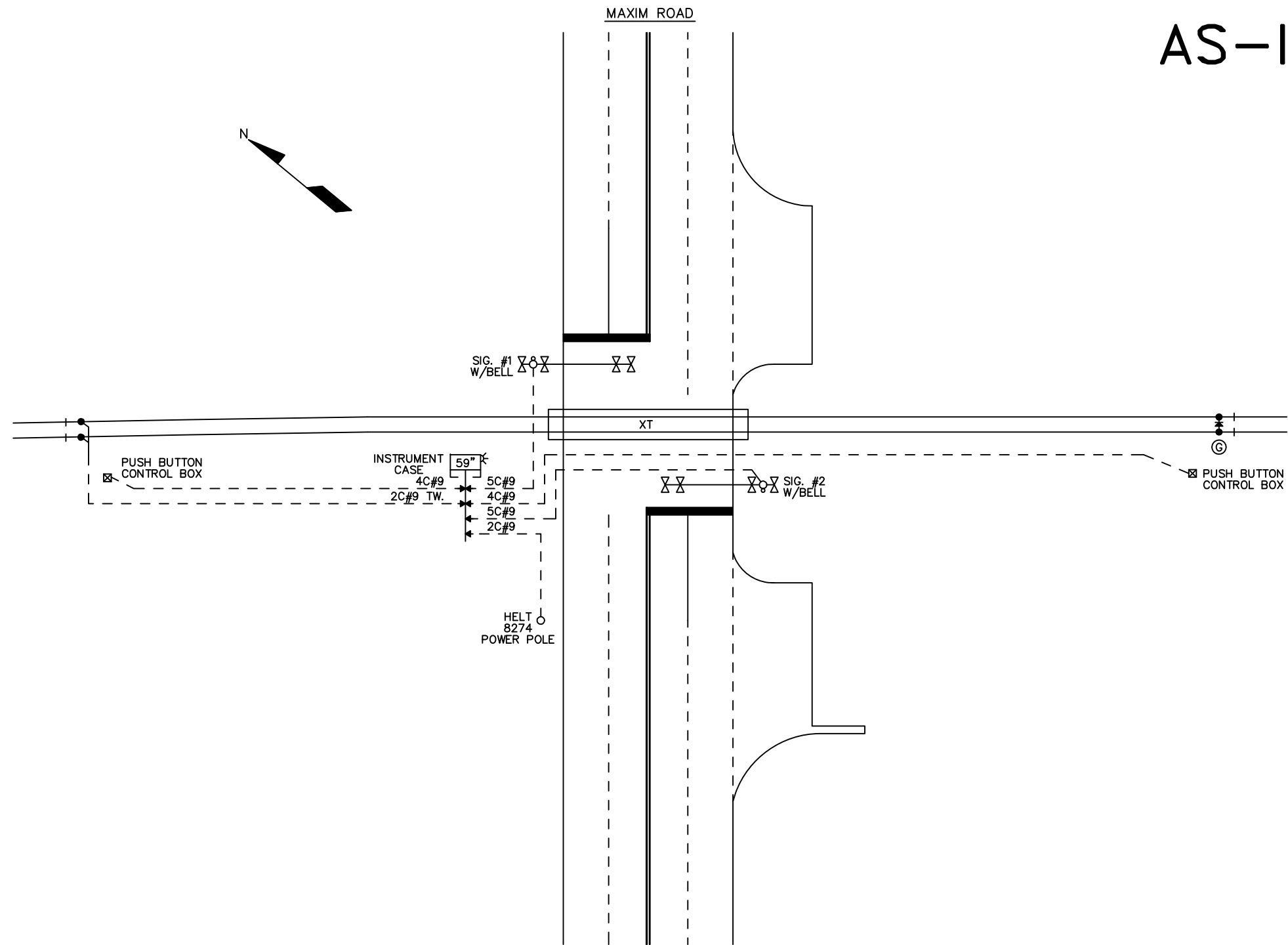
THE OPERATION OF THE ORGANIZATION REPRESENTED HEREON CANNOT BE CHECKED FINALLY UNTIL ALL CIRCUITS AND DEVICES ARE CONNECTED TO FORM A COMPLETE SYSTEM OR AN EFFECTIVE PORTION THEREOF. SUCH SYSTEM OR PORTION MUST BE GIVEN COMPLETE CIRCUIT AND OPERATIONAL TEST BEFORE BEING PLACED IN REGULAR OPERATION.

DES.	B.J.W.
CKD.	D.A.D.
DATE	9/20/88
ISSUE DATE	12/16/88
JOB NO.	8809094
EST. NO.	0988-885

TITLE	MANUALLY ACTIVATED - AUTOMATIC CLEAR HIGHWAY GRADE CROSSING SIGNAL SYSTEM MAXIM ROAD HARTFORD, CONNECTICUT
CONNECTICUT RESOURCES RECOVERY AUTHORITY	

 SAFETRAN SYSTEMS CORPORATION LOUISVILLE DIVISION	1044 EAST CHESTNUT STREET - LOUISVILLE, KENTUCKY 40204	
	PLAN NO. 180635	SHEET 1 OF 5

AS-IN-SERVICE PLANS



CABLE PLAN
NOT TO SCALE

USDOT CROSSING INVENTORY #860163G

REVISIONS			
NO.	DATE	NO. 1	DATE 6/22/2009
-		AS-IN-SERVICE FIELD CHECK	
DRAF.	CKD.	DRAF. S.P.R.	CKD. A.P.G.
JOB NO.		URS JOB NO. 36938181	

URS
URS CORPORATION AES
500 ENTERPRISE DRIVE
ROCKY HILL, CT 06067
1-(860)-529-8882

THE OPERATION OF THE ORGANIZATION REPRESENTED HEREON CANNOT BE CHECKED FINALLY UNTIL ALL CIRCUITS AND DEVICES ARE CONNECTED TO FORM A COMPLETE SYSTEM OR AN EFFECTIVE PORTION THEREOF. SUCH SYSTEM OR PORTION MUST BE GIVEN COMPLETE CIRCUIT AND OPERATIONAL TEST BEFORE BEING PLACED IN REGULAR OPERATION.

DES.	B.J.W.
CKD.	D.A.D.
DATE	9/20/88
ISSUE DATE	12/16/88
JOB NO.	8809094
EST. NO.	0988-885

TITLE
MANUALLY ACTIVATED - AUTOMATIC CLEAR HIGHWAY GRADE CROSSING SIGNAL SYSTEM
MAXIM ROAD
HARTFORD, CONNECTICUT
CONNECTICUT RESOURCES RECOVERY AUTHORITY

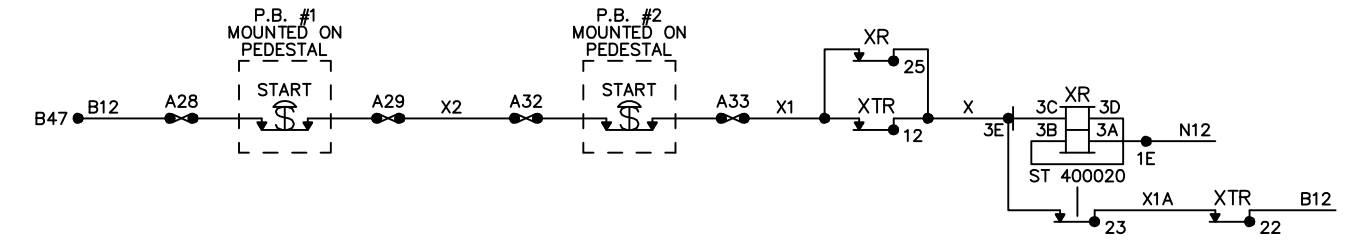
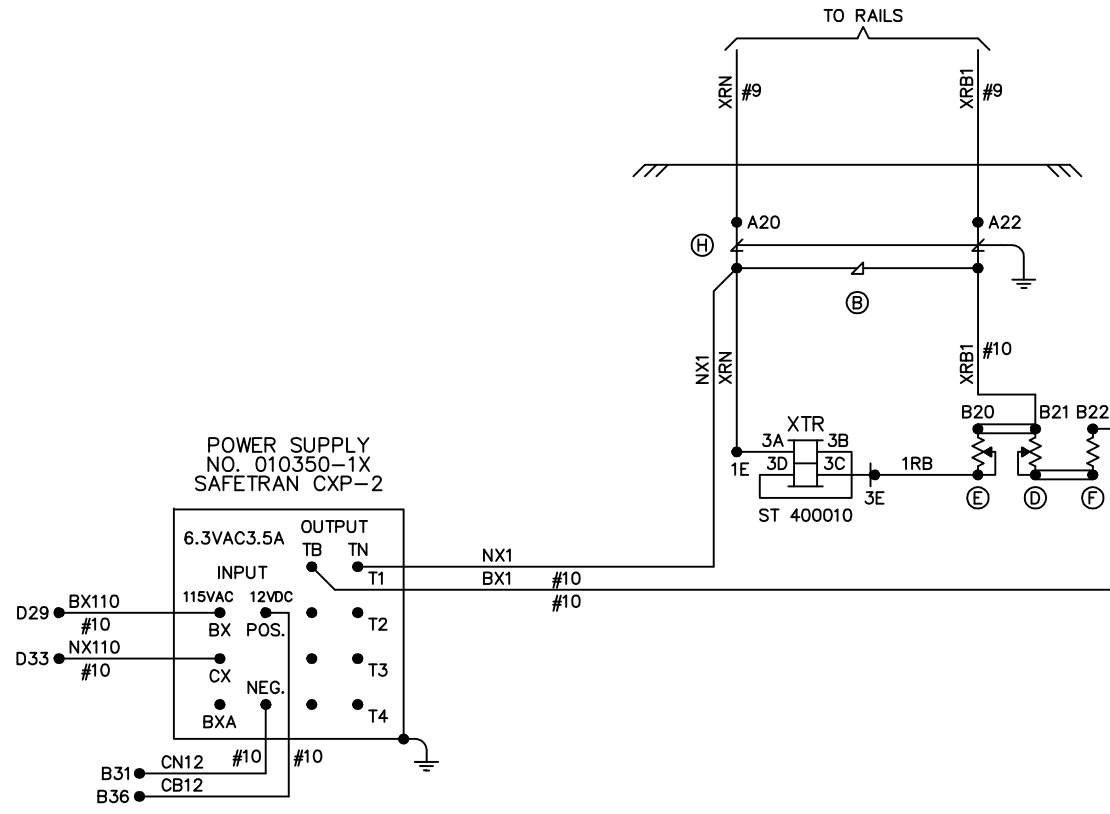


SAFETRAN SYSTEMS CORPORATION
LOUISVILLE DIVISION

1044 EAST CHESTNUT STREET - LOUISVILLE, KENTUCKY 40204

PLAN NO. 180635 SHEET 2 OF 5



AS-IN-SERVICE PLANS



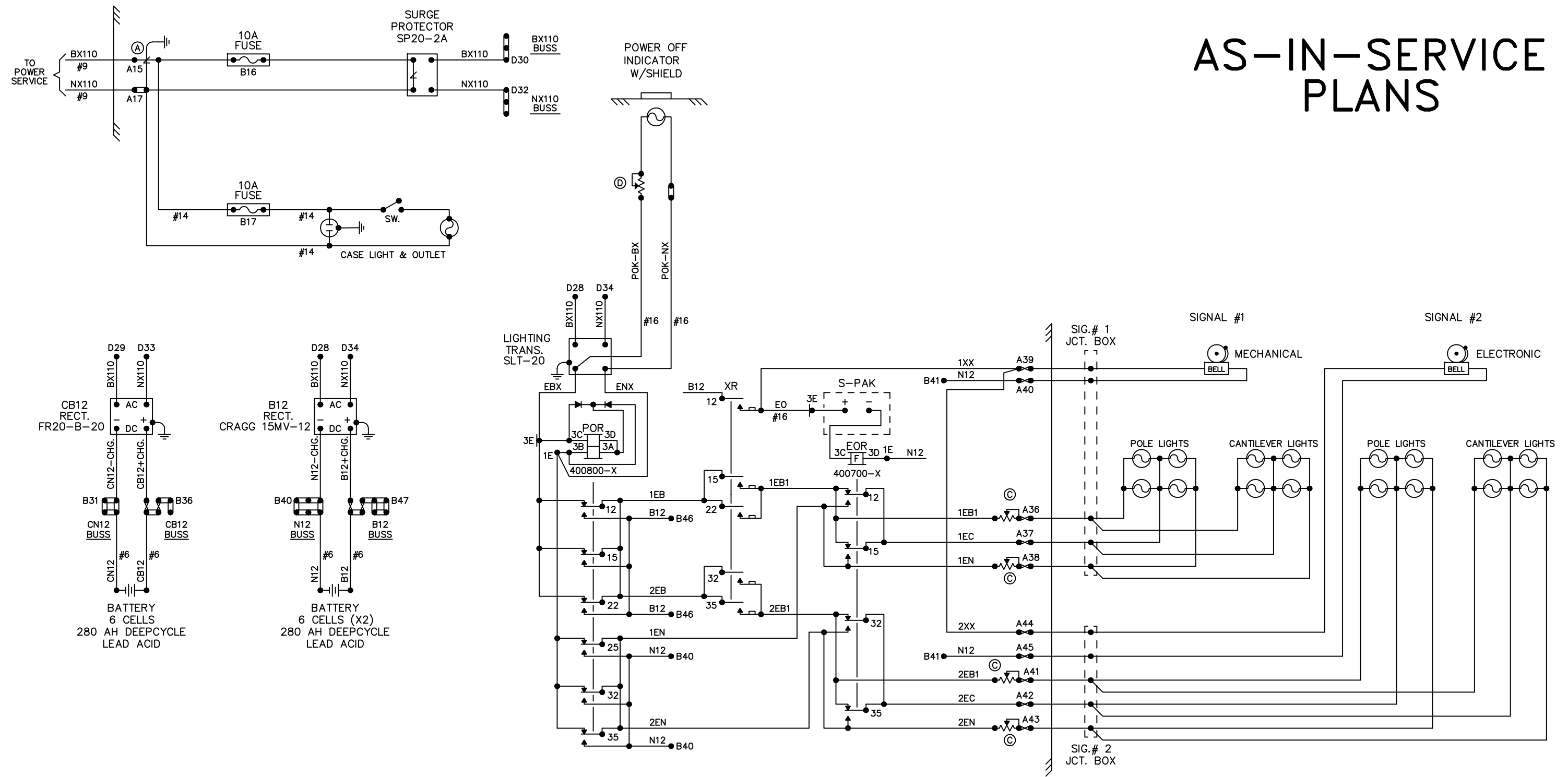
NOTE:
ALL WIRING THIS SHEET #16 AWG FLEX UNLESS NOTED.

CONTROL CIRCUITS

USDOT CROSSING INVENTORY #860163G

REVISIONS				 URS CORPORATION AES 500 ENTERPRISE DRIVE ROCKY HILL, CT 06067 1-(860)-529-8882	DES. B.J.W. CKD. D.A.D. DATE 9/20/88 ISSUE DATE 12/16/88 JOB NO. 8809094 EST. NO. 0988-885	TITLE MANUALLY ACTIVATED - AUTOMATIC CLEAR HIGHWAY GRADE CROSSING SIGNAL SYSTEM MAXIM ROAD HARTFORD, CONNECTICUT	 SAFETRAN SYSTEMS CORPORATION LOUISVILLE DIVISION	1044 EAST CHESTNUT STREET - LOUISVILLE, KENTUCKY 40204	
NO.	DATE	NO. 1	DATE 6/22/2009					PLAN NO. 180635	SHEET 3 OF 5
-	-	AS-IN-SERVICE FIELD CHECK							
DRAF.	CKD.	DRAF. S.P.R.	CKD. A.P.G.						
JOB NO.		URS JOB NO. 36938181							

AS-IN-SERVICE PLANS



POWER & LIGHTING CIRCUITS
 USDOT CROSSING INVENTORY #860163G

NOTE:
 ALL WIRE THIS SHEET TO BE NO. 10 AWG. FLEX
 UNLESS OTHERWISE NOTED.

REVISIONS	
NO.	DATE
NO. 1	DATE 6/22/2009
AS-IN-SERVICE FIELD CHECK	
DRAF.	CKD.
DRAF. S.P.R.	CKD. A.P.G.
JOB NO.	URS JOB NO. 36938181



THE OPERATION OF THE ORGANIZATION REPRESENTED HEREON CANNOT BE CHECKED FINALLY UNTIL ALL CIRCUITS AND DEVICES ARE CONNECTED TO FORM A COMPLETE SYSTEM OR AN EFFECTIVE PORTION THEREOF. SUCH SYSTEM OR PORTION MUST BE GIVEN COMPLETE CIRCUIT AND OPERATIONAL TEST BEFORE BEING PLACED IN REGULAR OPERATION.

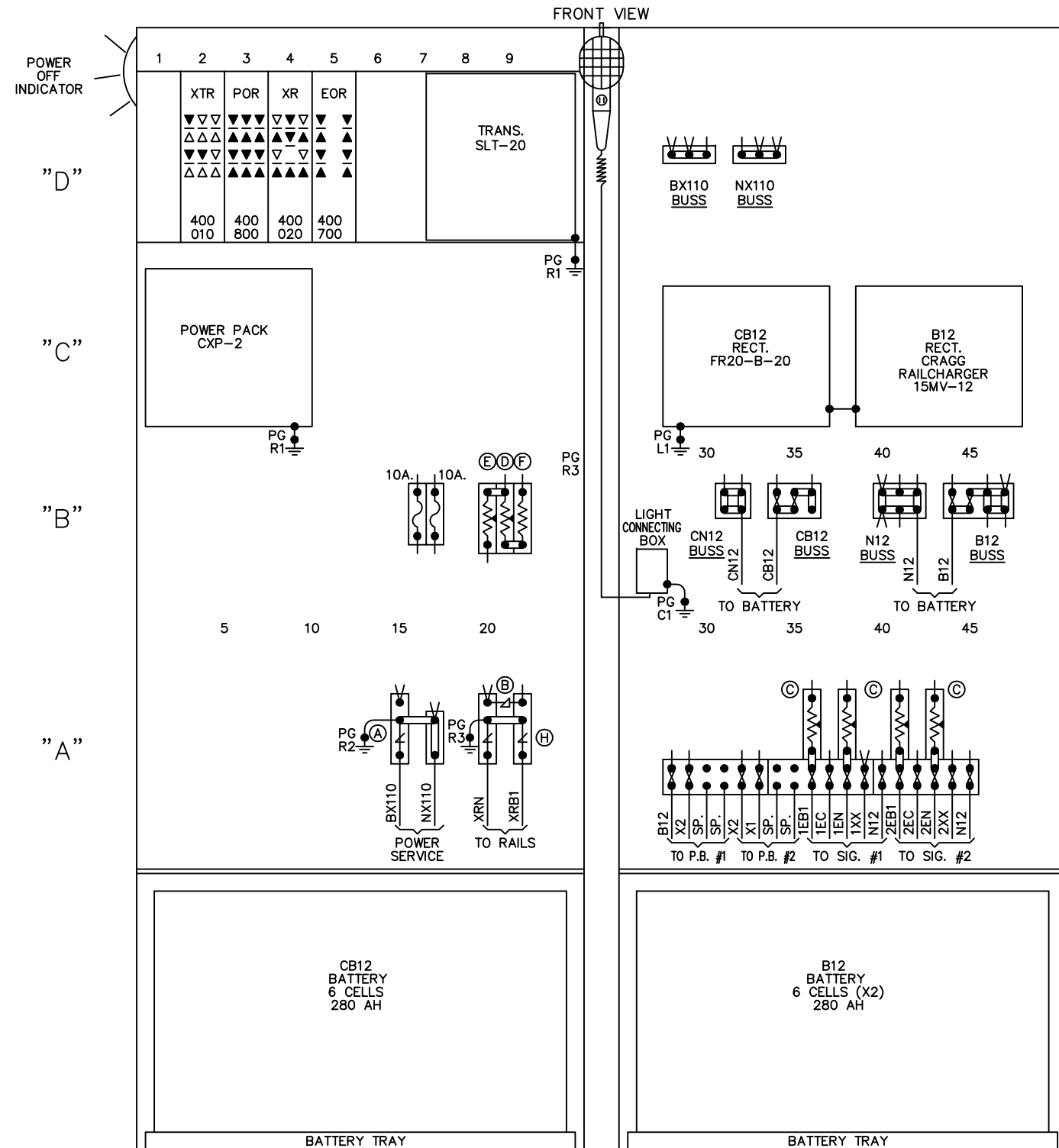
DES.	B.J.W.
CKD.	D.A.D.
DATE	9/20/88
ISSUE DATE	12/16/88
JOB NO.	8809094
EST. NO.	0988-885

TITLE
 MANUALLY ACTIVATED - AUTOMATIC CLEAR HIGHWAY GRADE CROSSING SIGNAL SYSTEM
 MAXIM ROAD
 HARTFORD, CONNECTICUT

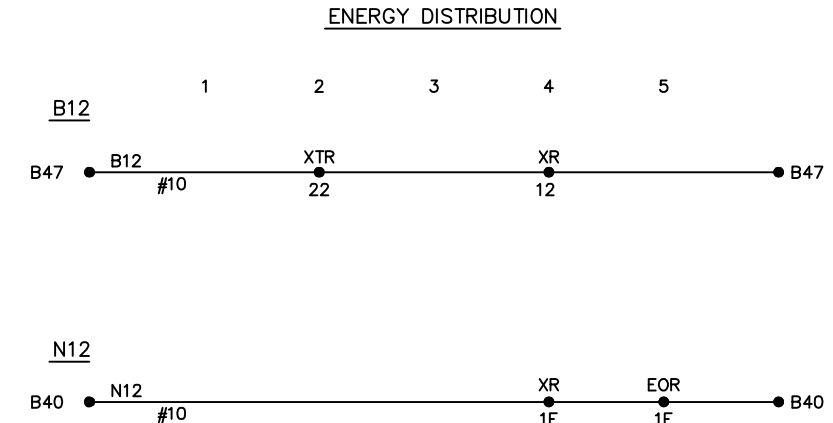
CONNECTICUT RESOURCES RECOVERY AUTHORITY

	SAFETRAN SYSTEMS CORPORATION LOUISVILLE DIVISION	
	1044 EAST CHESTNUT STREET - LOUISVILLE, KENTUCKY 40204	
PLAN NO. 180635	SHEET 4 OF 5	

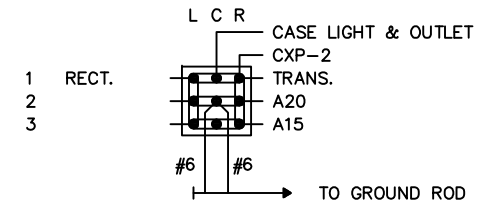
AS-IN-SERVICE PLANS



59" x 73" CASE (STEEL)



- NOTES:
- 1.) SURGE PROTECTOR NO. SP20-2A LOCATED IN REAR OF CASE.
 - 2.) POWER OFF RESISTOR & TERMINAL LOCATED IN REAR OF CASE.
 - 3.) ALL FUSE BLOCKS TO BE EQUIPPED WITH FUSE CLIP CLAMPS.
 - 4.) PRIME GROUND LOCATED IN REAR OF CASE.



CASE LAYOUT NO SCALE

USDOT CROSSING INVENTORY #860163G

REVISIONS			
NO.	DATE	NO. 1	DATE 6/22/2009
-	-	AS-IN-SERVICE FIELD CHECK	
DRAF.	CKD.	DRAF. S.P.R.	CKD. A.P.G.
JOB NO.		URS JOB NO. 36938181	



THE OPERATION OF THE ORGANIZATION REPRESENTED HEREON CANNOT BE CHECKED FINALLY UNTIL ALL CIRCUITS AND DEVICES ARE CONNECTED TO FORM A COMPLETE SYSTEM OR AN EFFECTIVE PORTION THEREOF. SUCH SYSTEM OR PORTION MUST BE GIVEN COMPLETE CIRCUIT AND OPERATIONAL TEST BEFORE BEING PLACED IN REGULAR OPERATION.

DES.	B.J.W.
CKD.	D.A.D.
DATE	9/20/88
ISSUE DATE	12/16/88
JOB NO.	8809094
EST. NO.	0988-885

TITLE
MANUALLY ACTIVATED - AUTOMATIC CLEAR HIGHWAY GRADE CROSSING SIGNAL SYSTEM
MAXIM ROAD
HARTFORD, CONNECTICUT

CONNECTICUT RESOURCES RECOVERY AUTHORITY

SAFETRAN SYSTEMS CORPORATION LOUISVILLE DIVISION	
1044 EAST CHESTNUT STREET - LOUISVILLE, KENTUCKY 40204	
PLAN NO. 180635	SHEET 5 OF 5