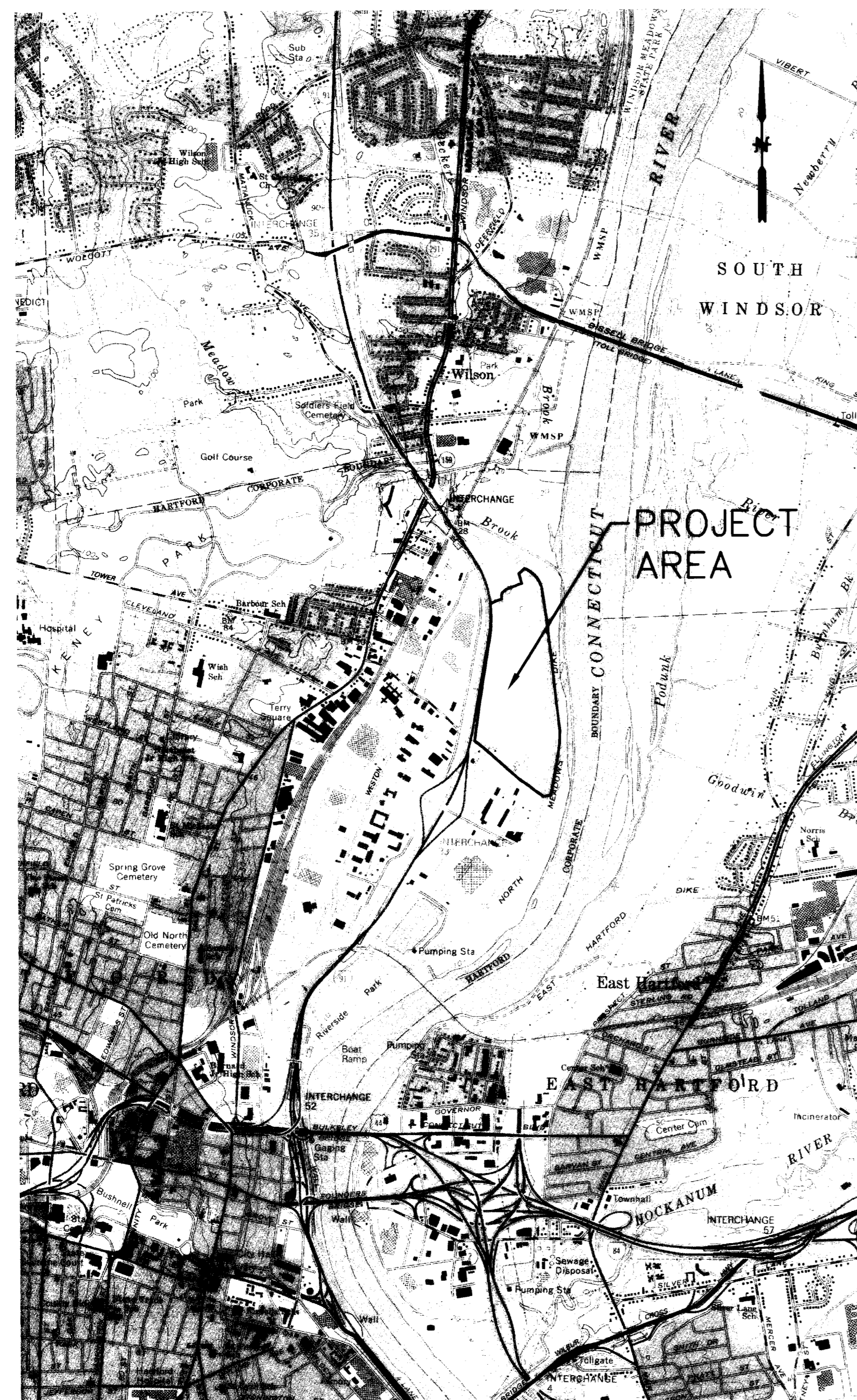


CONNECTICUT RESOURCES RECOVERY AUTHORITY

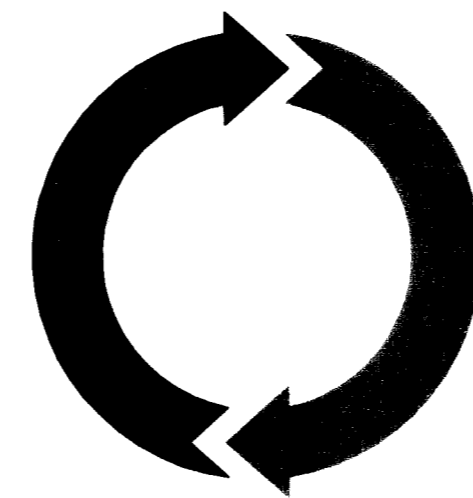
HARTFORD LANDFILL CLOSURE MSW/INTERIM ASH DISPOSAL AREA LEIBERT ROAD HARTFORD, CT

SHEET INDEX



LOCATION MAP SCALE:
1"=2000'

JUNE 2007
(COVER SHEET REVISED - JUNE 15, 2007)



**CONNECTICUT
RESOURCES
RECOVERY
AUTHORITY**

SHEET NO.	TITLE
GI-101	GENERAL NOTES
VF-101 TO VF-102	EXISTING CONDITIONS PLAN
CI-101	PHASING AND ACCESS PLAN
CP-101	ACCESS ROAD PLAN
CU-101	FORCE MAIN RELOCATION PLAN
CU-102 TO CU-103	ELECTRICAL RELOCATION PLAN
CG-101 TO CG-104	SUBGRADE PLANS
CG-111 TO CG-114	FINAL GRADING PLANS
CE-101 TO CE-104	EROSION CONTROL PLANS
CI-501 TO CI-503	COVER SYSTEM AND SITE DETAILS
CP-501	ACCESS ROAD DETAILS
CU-501	FORCE MAIN RELOCATION DETAILS
CU-502	ELECTRICAL DETAILS
CI-511 TO CI-513	DRAINAGE DETAILS
CE-501 TO CE-502	EROSION CONTROL DETAILS

PREPARED BY:

WWW.FOND.COM



FUSS & O'NEILL
Discipline to Deliver

146 HARTFORD RD

MANCHESTER, CT 06040

860.646.2469

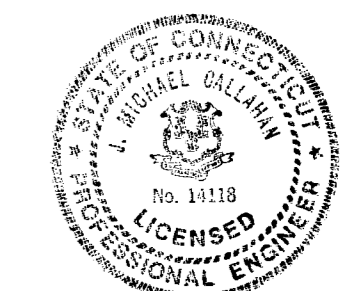


Richard D. Jones
RICHARD D. JONES, P.E.

CT P.E. LICENSE No. 19393

J. Michael Callahan

J. MICHAEL CALLAHAN, P.E.
(ELECTRICAL DESIGN)



CT P.E. LICENSE No. 14118