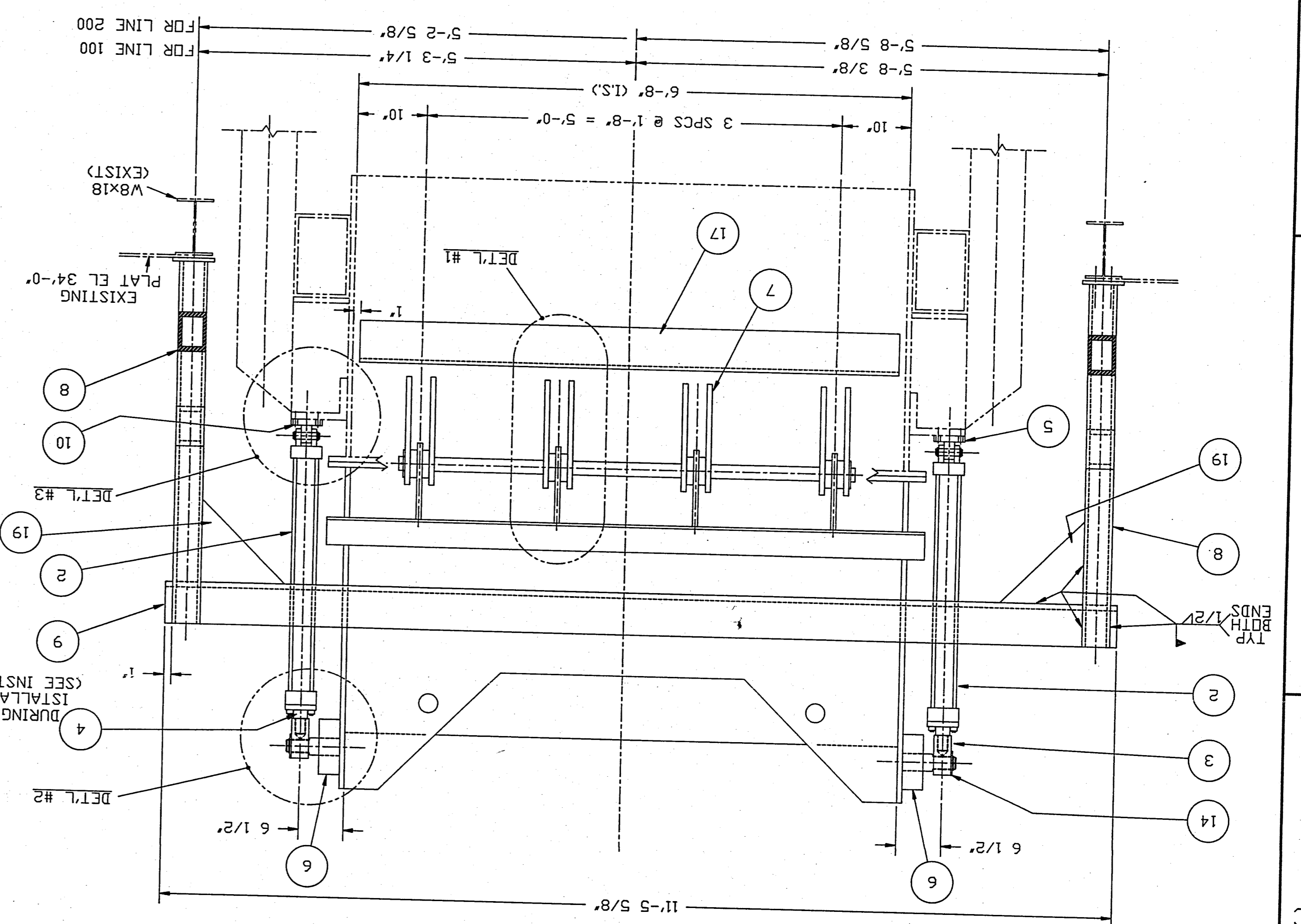


ITEM No.	QUANTITY	REQ'D.
1	1	
2	2	
3	2	
4	2	
5	2	
6	2	
7	2	
8	2	
9	2	
10	2	
11	2	
12	6	
13	2	
14	2	
15	32	
16	1	
17	1	
18	2	
19	2	

BILL OF MATERIAL
 QUANTITIES LISTED ARE FOR ONE SHREDDER

1	SHREDDER COVER ASS'Y.
2	HYDRAULIC CYLINDER - PARKER SERIES 2H MODEL NO. 3.25" BB-2HKUVS24A
3	& PIVOT PIN - PARKER PART NO. 68370 - 01
4	CYLINDER FIT-UP SPACER RING
5	CYLINDER MOUNTING PLATE - PARKER PART NO. 85361 - FABRICATED TYPE
6	CYLINDER/COVER PIVOT
7	SHREDDER FIXED HINGE
8	COVER REST KNEE BRACE
9	COVER REST CROSS BRACE - L8"x6"x3/4"x11-5/8" LG.
10	5/8 UNC x 2 3/4 LG. A-325 BOLT w/ NUT
11	COVER PIVOT CUTTER PIN - 01/8" x 3" LG.
12	COVER LINER A - CURVED (INCLUDED w/ ITEM #1)
13	COVER LINER B - FLAT (INCLUDED w/ ITEM #1)
14	COVER PIVOT WASHER - 3 1/2" O.D. x 1 13/16" I.D. x 3/16" THK.
15	1 UNC x 2 3/4 LG. CSINK SOCKETHEAD BOLT w/ LOCKNUT
16	GRADE 5 DR BETTER (INCLUDED w/ ITEM #1)
17	3/4 UNC x 2 1/4 LG. A-325 BOLT w/ NUT
18	L6" x 4" x 1/2" x 6'-6" LG.
19	3/4 UNC x 2 1/2 LG. A-325 BOLT w/ NUT
20	GUSSET - 1/2" THK.



SHREDDER COVER & HYDRAULIC CYLINDER ARRANGEMENT & INSTALLATION

ASSEMBLY TYPICAL FOR TWO SHREDDERS, UN

REV.	DATE	DESCRIPTION
A	3-30-92	INITIAL RELEASE

DRWN	CHECKED	APPROVED	SCALE	DATE
JRB	PDK	[Signature]	1" = 12"	3-30-92

DES/DRFT	BENSON	SCALE	DATE
[Signature]	[Signature]	1" = 12"	3-30-92

DISC	ENGR.	DATE
[Signature]	[Signature]	11/192

ENGINEERING REVIEW

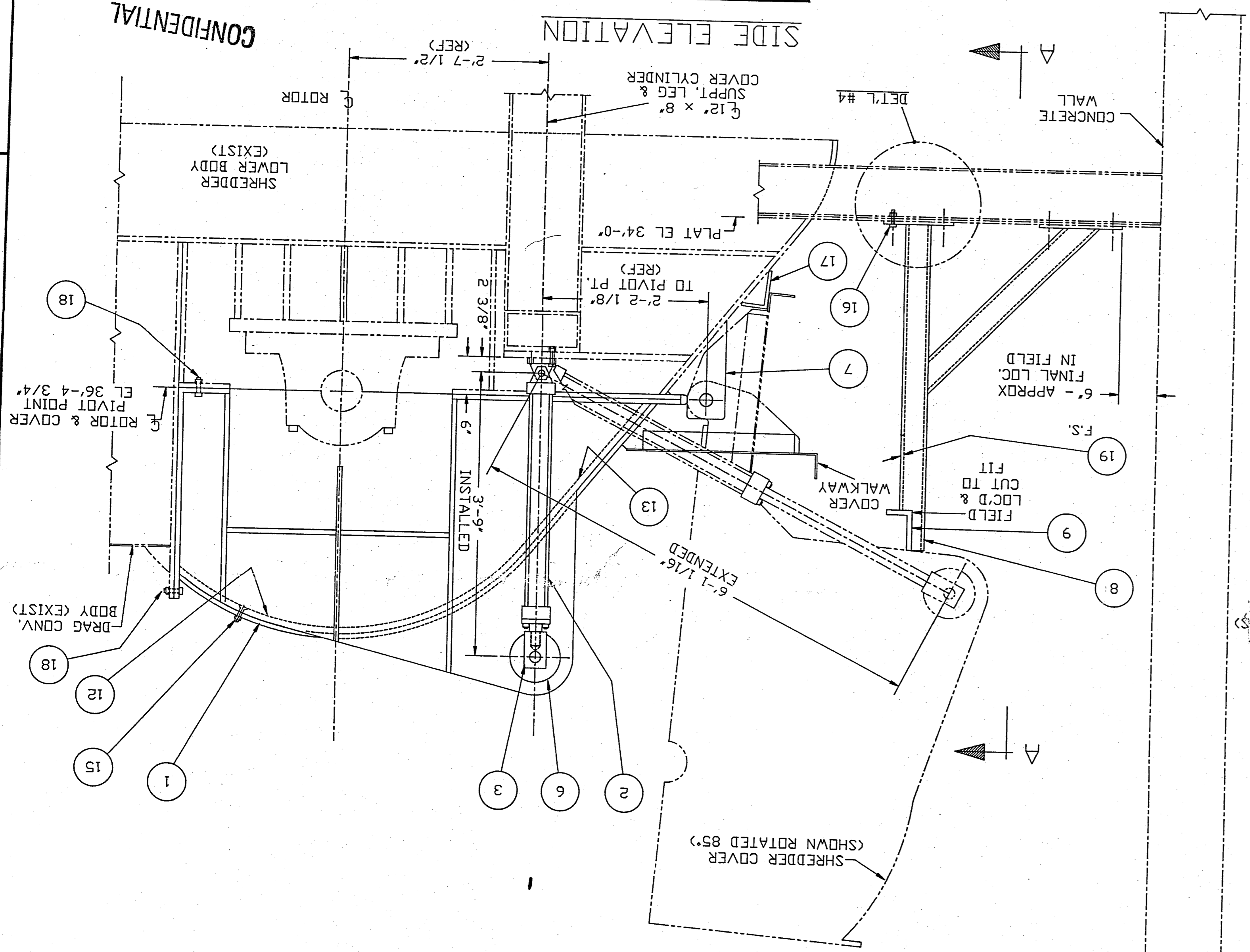
ABB RESOURCE RECOVERY SYSTEMS

PRIMARY SHREDDER COVER & HYDRAULICS ARRANGEMENT & INSTALLATION

MID-CONNECTICUT PROJECT

MS12-P-26

REV. A



NOTES:

1. WORK THIS DRAWING WITH ARRANGEMENT SH.#2, DWG.#MS12-P-27.
2. REFERENCE DETAIL DRAWINGS: SH.#1 - DWG.#MS12-P-28; SH.#2 - DWG.#MS12-P-29
3. REFER TO INSTALLATION MANUAL FOR DETAILED CONSTRUCTION SEQUENCE.
4. ALL WELDING TO BE IN ACCORDANCE WITH AWS D11 LATEST REVISION.

WELDING NOTES:

1. GRIND OFF PAINT ON ALL EXISTING SURFACES TO BE WELDED.
2. PREHEAT PLATE STEEL TO 300° F.
3. ALL WELDS TO BE DONE WITH STICK USING E7018 ROD.
4. ALL WELDING TO BE IN ACCORDANCE WITH AWS D11 LATEST REVISION.